

# PRODUCT DATA SHEET INFORMATION

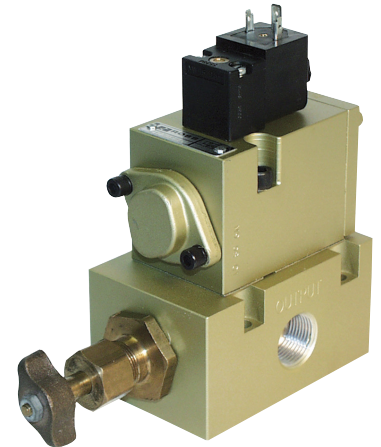


## FINAL BLOW, SETTLE BLOW, FINISH COOLING VALVES

### 3/2 Valve – High-Speed Poppet Design

#### Features:

- Non-friction seat seals
- High-temperature service
- Solenoid, remote pilot options
- Non-lube
- Specialized low-wear body coating
- Quick exhaust models available
- Locking or non-locking manual overrides
- Pressure booster option\*
- High-speed poppet design



ROSS Slim Line Glass Valve and Base with Shut-off

### Slim Line Valves

Operation	Position	Description	Model Number
Pressure Controlled	Normally Closed	Valve (signal port in valve)	2153D5915
		Valve with Pressure Booster	2153D5916
		Valve with Quick Exhaust	2153D5917
		Valve with Pressure Booster & Quick Exhaust	2153D5918
		Valve (signal port through base)	2153D5933
		Valve with Quick Exhaust	2153D5937
Solenoid Pilot Controlled	Normally Closed	Valve (standard configuration)	2173D5943
		Valve with Quick Exhaust	2173D5941
		Valve with Quick Exhaust with Locking Manual Override	2173D5964
		Valve with Quick Exhaust & Pressure Booster	2173D5942
		Valve with Locking Manual Override	2173D5963
	Normally Open	Valve (standard configuration)	2174B5920
		Valve with Pressure Booster	2174B5917
		Valve with Quick Exhaust	2174B5918
		Valve with Quick Exhaust & Pressure Booster	2174C5919
		Valve with Locking Manual Override	2174B5921

#### Standard Specifications:

**Construction:** Poppet.

**Solenoid Pilot:** Rated for continuous duty.

**Standard Voltages:** 100-110 volts AC, 50 Hz; 100-120 volts AC, 60 Hz; 110 volts DC.

**Power Consumption:** 8 VA inrush, 6 VA holding on 50 or 60 Hz; 6 watts nominal on DC.

**Ambient Temperature:** 0° to 250° F (-17° to 122° C).

**Media Temperature:** 0° to 300° F (-17° to 150° C).

**Flow Media:** Filtered air.

**Inlet Pressure:** 30 to 150 psig (2 to 10 bar)\*.

\*Pressure Booster option may allow for operation with inlet and pilot pressures lower than 30 psig (2 bar). Consult ROSS for specifics.



**Applications:** IS Glass Machines.

ROSS CONTROLS®

www.rosscontrols.com



## Pressure Boosters and Quick Exhausts

*ROSS Slim Line valves are available with Pressure Boosters and Quick Exhausts!*

### Use A Quick Exhaust When:

- Exhaust cycle of the signal valve is too slow (i.e., 21-Valve block)
- Better repeatability is needed
- A decrease in time between cycles is needed
- Over-Lubrication is the cause of pooling oil in the valve pilot section or in the line from the signal valve to the main valve

### Use A Pressure Booster When:

- Signal pressure is below 30 psi (2 bar)
- Line pressure is higher than signal pressure
- Greater repeatability is needed

## Slim Line Bases

Number of Stations	Port Size	Description	Model Number
Single Station	3/4	Side Ported	850H91
	3/4	Side Ported with Shutoff	868G91
	3/4	Bottom Ported Inlet with Shutoff	852G91
Dual Station	3/4 (BSPP)	Common Supply (For Cooling)	D846H91
	3/4" (BSPP)	Individual Supply Ports (For Plunger)	D847H91
	1/2	Individual Supply Ports (For Plunger)	880H91
Three Station	1/2	Common Supply and Exhaust (Cooling Manifold)	801H91
	1/2	Individual Supply Ports, Common External Pilot Port & Exh. Ports (Plunger Up)	802H91
	1/2	Common Supply & Exhaust Ports, Individual External Pilot Ports	881H91
	1/2	Plunger Up, Individual Supply Ports & External Pilot Ports, External Pilot Port Above Outlet	882H91
	1/2	Common Supply, Ext. Pilot & Exhaust Ports (Cooler Manifold), External Pilot Port Above Outlet	883H91
	1/2	Plunger Up, Individual Supply Ports, Common External Pilot Port & Exhaust Ports, External Pilot Port Above Outlet	884H91

### ROSS VALVES FOR IS GLASS MACHINES:

- 21-Valve Block
- Blow Head On/Off
- Blow Mold Vacuum
- Blow Pistol
- Cartridge Valve, Open or Closed
- Counterblow Vacuum or Hi-Lo Pressure
- Final Blow, Settle Blow, Finish Cooling, Blow Off
- Mold Open/Close
- Plunger Up or Down, Cooling
- Proportional Valve
- Pusher

Your local ROSS distributor is:



### WARRANTY, CAUTIONS and WARNINGS

Standard ROSS warranty, cautions and warnings apply, available upon request or at [www.rosscontrols.com](http://www.rosscontrols.com).

ROSS CONTROLS	USA	Tel: Tech. Svs. 1-888-TEK-ROSS / Cust. Svs. 1-800-GET-ROSS	web site: <a href="http://www.rosscontrols.com">www.rosscontrols.com</a>
ROSS EUROPA GmbH	Germany	Tel: 49-6103-7597-0	web site: <a href="http://www.rosseuropa.com">www.rosseuropa.com</a>
ROSS ASIA K.K.	Japan	Tel: 81-42-778-7251	web site: <a href="http://www.rossasia.co.jp">www.rossasia.co.jp</a>
ROSS UK Ltd.	UK	Tel: 44-1543-671495	web site: <a href="http://www.rossuk.co.uk">www.rossuk.co.uk</a>
ROSS SOUTH AMERICA Ltda.	Brazil	Tel: 55-11-4335-2200	email: <a href="mailto:vendas@rosscontrols.com">vendas@rosscontrols.com</a>
ROSS CONTROLS INDIA Pvt. Ltd.	India	Tel: 91-44-2624-9040	email: <a href="mailto:ross.chennai@rosscontrols.com">ross.chennai@rosscontrols.com</a>
ROSS CONTROLS (CHINA) Ltd.	China	Tel: 86-21-6915-7961	web site: <a href="http://www.rosscontrolschina.com">www.rosscontrolschina.com</a>
ROSS FRANCE S.A.S.	France	Tel: 33-1-49-45-65-65	web site: <a href="http://www.rossfrance.com">www.rossfrance.com</a>
ROSS CANADA	Canada	Tel: 1-416-251-7677 (416-251-ROSS)	web site: <a href="http://www.rosscanada.com">www.rosscanada.com</a>
<small>(6077170 CANADA INC. AN INDEPENDENT REPRESENTATIVE)</small>			