

# ROSS SAFETY-RELATED SOLUTIONS (ISO 13849-1)

## ROSS® LÖSUNGEN FÜR SICHERHEITSRELEVANTE ANWENDUNGEN (BEISPIELE)

- Gefährliche Zylinderbewegungen (eine Richtung / beide Richtungen)
- Punktschweißen
- Werkzeug- / Produktschutz
- Fehlersichere Energietrennung (zentral oder partiell)
- Fehlersicheres Entlüften
- Kupplung- / Bremssysteme an Pressen
- Gewichtsausgleich
- Systeme mit Energieüberwachung
- Handhabung vertikaler Lasten
- Sicheres Lasten halten
- Zylinder in Mittelstellung
- Zweihandsteuerung
- Kontrollierter Druckaufbau / Soft Start (EEZ-ON®)
- Lärmreduzierung
- Zweihand-Maschinenstart (anti-tie-down)

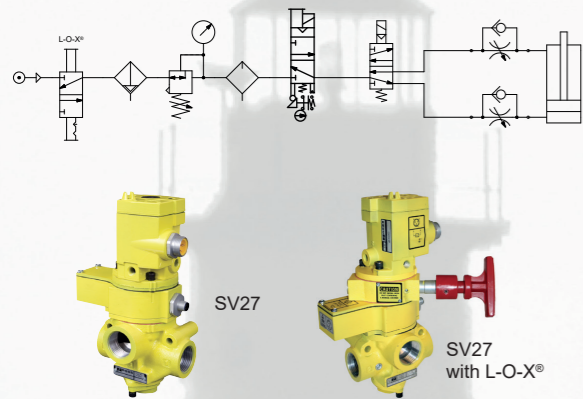
## ROSS® SAFETY-RELATED SOLUTIONS (EXAMPLES)

- Cylinder hazard in one direction, cylinder hazard in two directions
- Pinch points
- Tooling or product damage
- Failsafe energy isolation (single point or partial)
- Safety exhaust (dump)
- Press clutch / brake
- Counterbalance
- Monitored power systems
- Vertical loads
- Safe Load holding
- Cylinder mid-stroke positioning
- Two-hand control
- EEZ-ON® gradual pressure build-up / Soft Start
- Noise reduction
- 2-hand anti-tie-down machine start

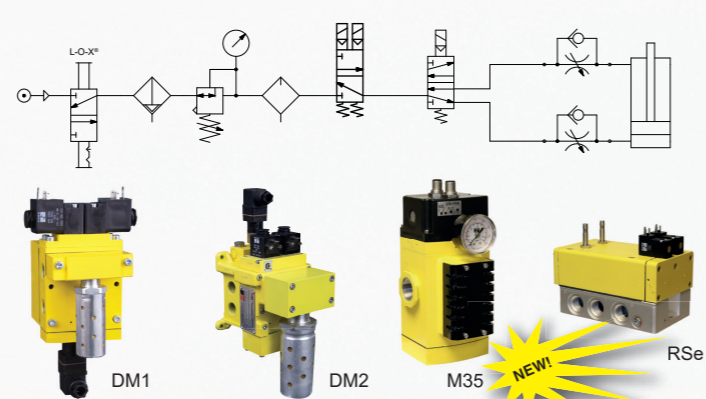
## IHR ANSPRECHPARTNER / YOUR CONTACT

**Dietrich Warmbier**  
 Global Safety Product Manager  
 FS Eng (TÜV Rheinland, #13530/16, Machinery)  
 Phone: +49 6753 123965  
 Mobile: +49 171 5800 342  
 dietrich.warmbier@rosscontrols.com

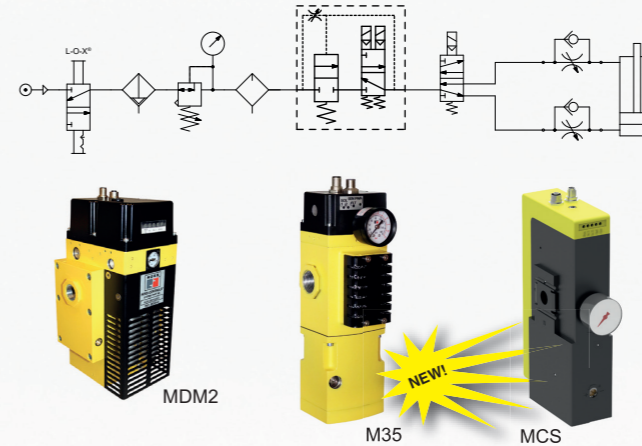
Safety Exhaust, Cat. 2



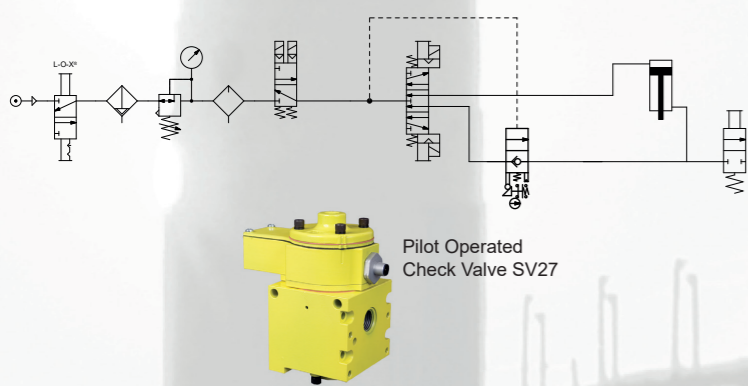
Safety Exhaust, Cat. 4



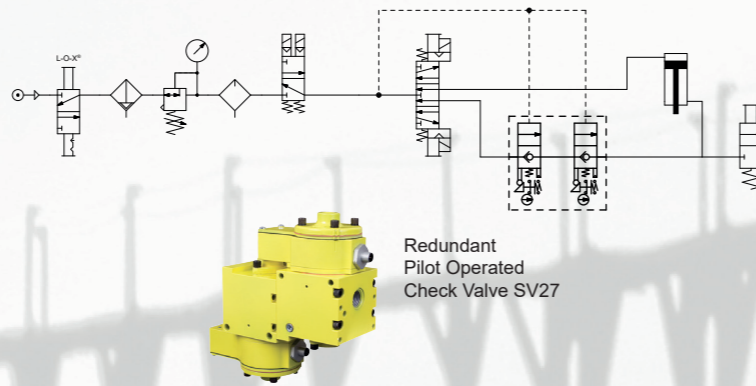
Safety Exhaust with Soft Start, Cat. 4



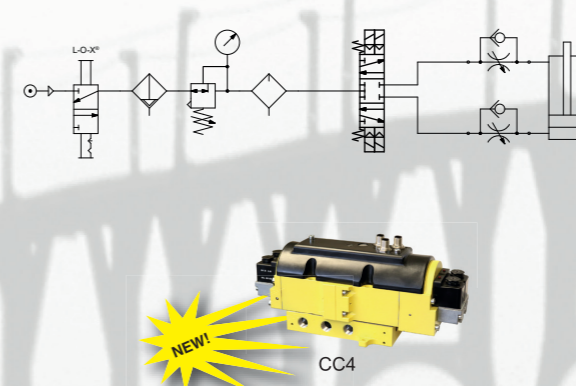
Safe Load Holding, Cat. 2



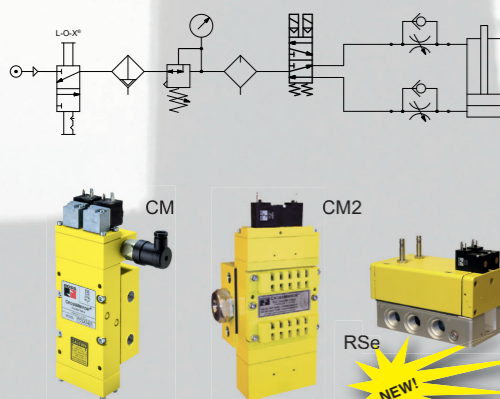
Safe Load Holding, Cat. 3



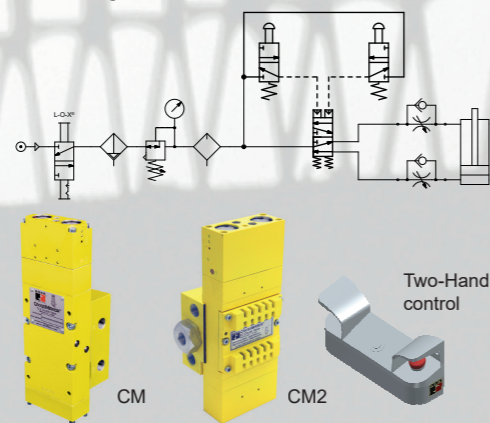
Safe Load Holding, Cat. 4



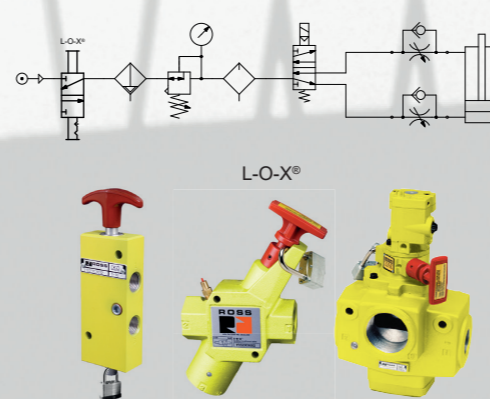
Safe Cylinder Return, Cat. 4



Safe Cylinder Return Air Pilot, Cat. 4



Energy Isolation, Cat. 1



Energy Isolation and Soft Start, Cat. 1

