

## ACE Damping Plugs – a new design in emergency stops

The function of the innovative damping plugs made of co-polyester elastomer is the same as the down holder dampers. However, they are located to the side of the down holder and are loaded radially.

The metal sheets are located and held firmly by the down holder to achieve clean forming. After the pressing process, the heavily accelerated tool top section drives upwards into the start position and takes the down holder with it. The plug bolts hit against the damping elements. Due to the high speeds of the new presses, the previously used PU elements were overloaded and cannot deal with the high peak forces.

The damping plugs are available in four different sizes and are mainly used in large tools. The number and size depends on the weight and speed of the down holder.

### **In comparison to the standard PU springs, the TUBUS Damping plugs offer:**

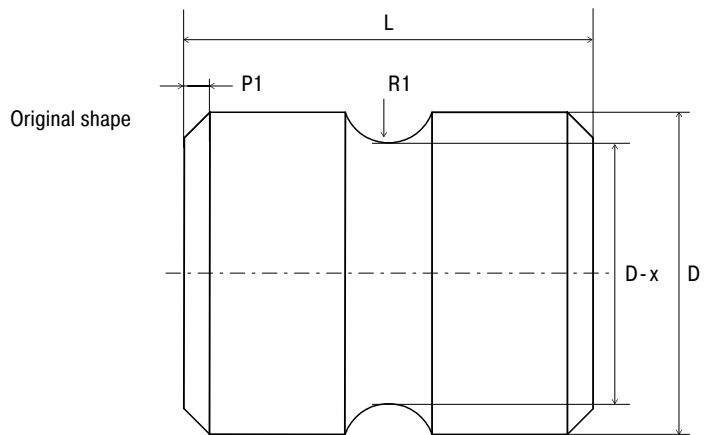
- > A high service life and operational safety
- > High force and energy absorption
- > High effectiveness level
- > Low setting behaviour
- > Noise reduction
- > UV protection
- > Low abrasion
- > Efficient work with higher cycle speeds
- > More design freedom when setting up new tools



**Environment:** resistant against microbes, seawater, chemicals and with very good UV resistance. No absorption of water and no swelling.

**Operating temperature range:** -40°C to 90°C

**Upon request:** special strokes, characteristics, sizes and materials. More individual damping solutions for different tool standards are possible.



### Dimensions and Capacity Chart

Type TUBUS-Special	Frame size	Standard	Ident-No.	D	D - x recess depth	R1 recess radius	P1	L	Material hardness Rating
D00023	B	BMW	2 173 697	40	40 - 8	7	3 x 45°	60	Shore 40D
D00024	C	BMW	2 173 698	50	50 - 10	8	4 x 45°	70	Shore 40D
D00035	D	BMW	2 173 699	63	63 - 12	9	5 x 45°	80	Shore 45D
D00036	E	BMW	2 173 700	80	80 - 14	10	6 x 45°	90	Shore 45D

### Installation of a Damping Plug

