

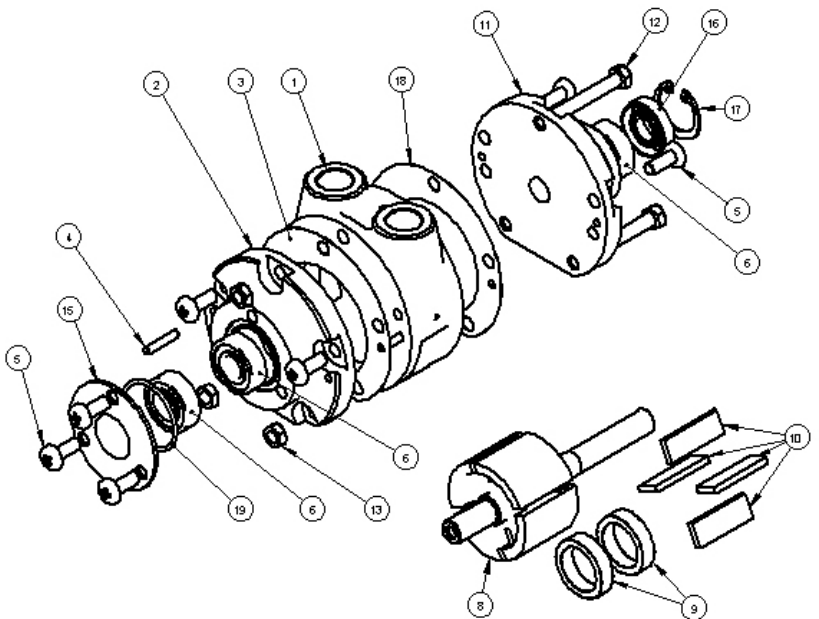
Attitude: The motor can be operated in all positions.
Maximum temperature -20°C to +80°C (-4°F to +176°F).

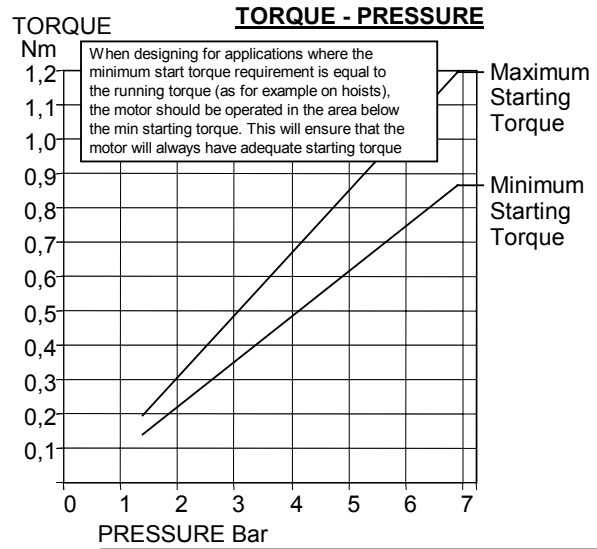
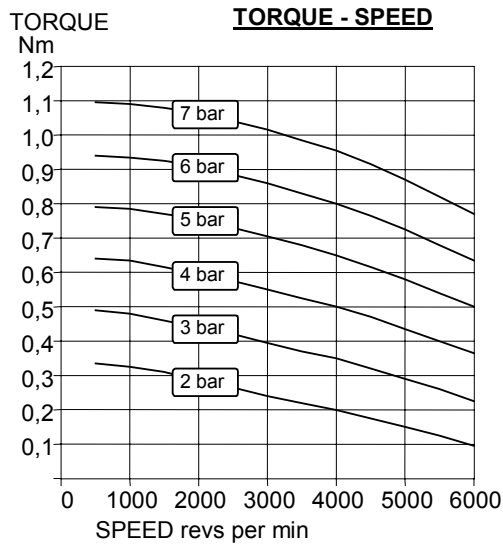
Max. Overhung Force on shaft 18 N (4.0 lbf.).
Axial loads should be kept to a minimum.

Mass 1.3 kg

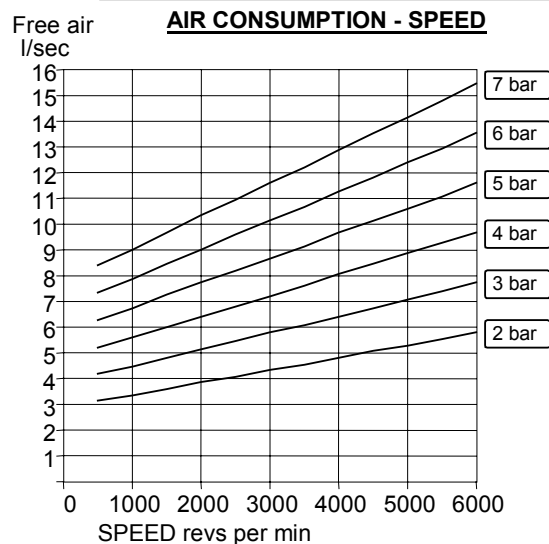
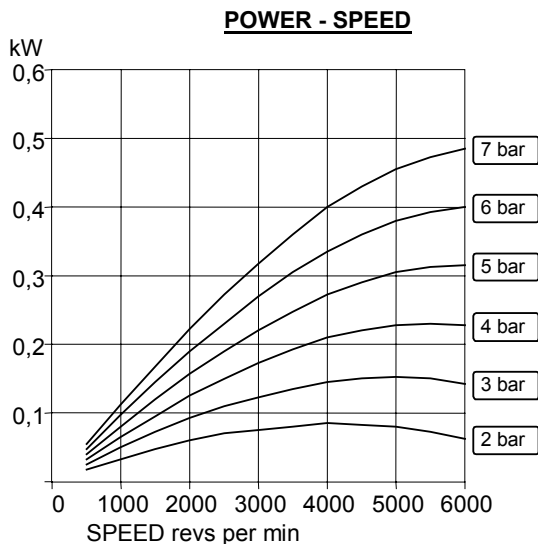
Exploded view with spare parts list

Item	Part No.	Description	Qty	Kit No.
01	710-001	Body NPT	1	
02	710-002	Rear Cover	1	
03		Gasket	1	719-910
04	806-009	Dowel Pin	4	
05	805-050	Screw	7	
06	807-053	Bearing	3	
08	710-911	Rotor Shaft	1	
09	710-006	Ejection Ring	2	
10		Blade	4	719-910
11	710-003	Front Cover	1	
12	802-700	Bolt M5 x 40	3	
13	801-700	Nut M5	3	
15	710-008	End Plate	1	
16		Shaft Seal	1	719-910
17		Circlip	1	719-910
18		Gasket	1	719-910
19		O-ring	1	719-910





A pressure regulator should be used to control the air pressure to the motor, to limit the maximum output torque applied to the driven assembly.



Muffler supplied with motor.
Motor is reversible.

Attitude: The motor can be operated in all positions.
Maximum temperature -20°C to +80°C (-4°F to +176°F).

Max. Overhung Force on motor shaft 18 N (4.0 lbf.).
Axial loads should be kept to a minimum.

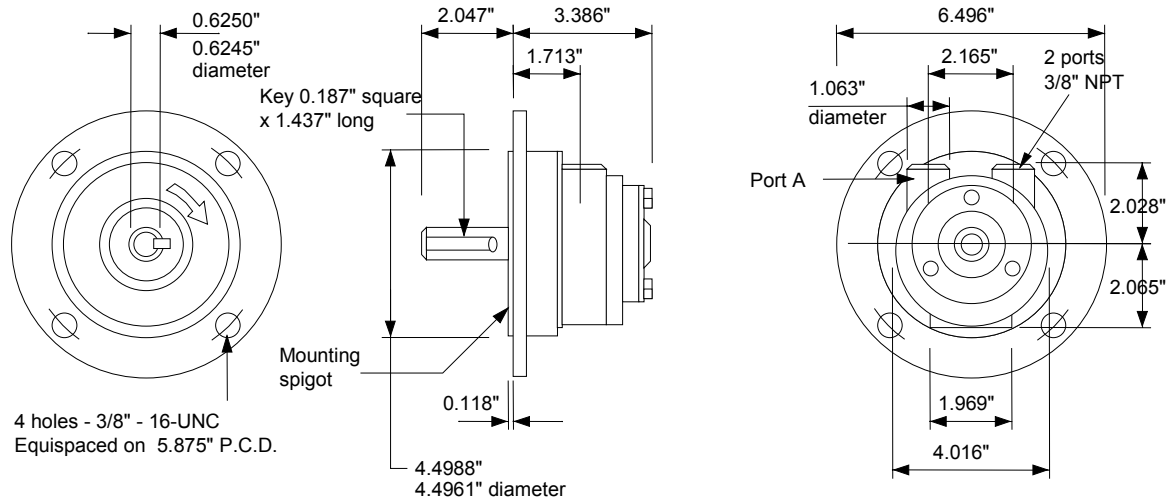
AIRLINE FILTRATION AND LUBRICATION

Use 64 micron filtration or better. Choose a lubricator suitable for the flow required. Prior to initial start-up, inject oil into the inlet port.

Lubricator drop rate 4-5 drops/minute continuous operation.

Lubricator drop rate 9-12 drops/minute intermittent operation.

Maximum continuous speed 6000 rpm



Attitude: The motor can be operated in all positions.
Maximum temperature -20°C to +80°C (-4°F to +176°F).
Muffler supplied with motor.

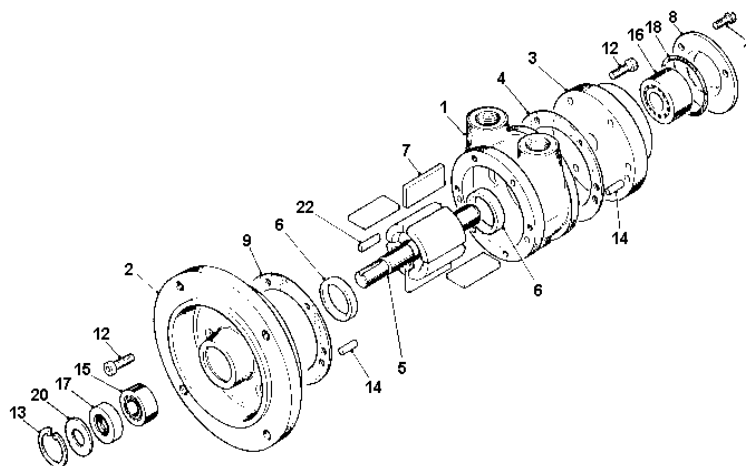
Max. Overhung Force on shaft 400 N (90 lbf.).
Axial loads should be kept to a minimum.

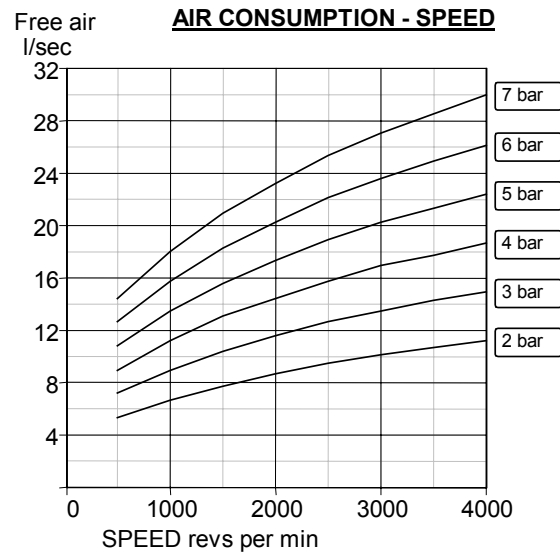
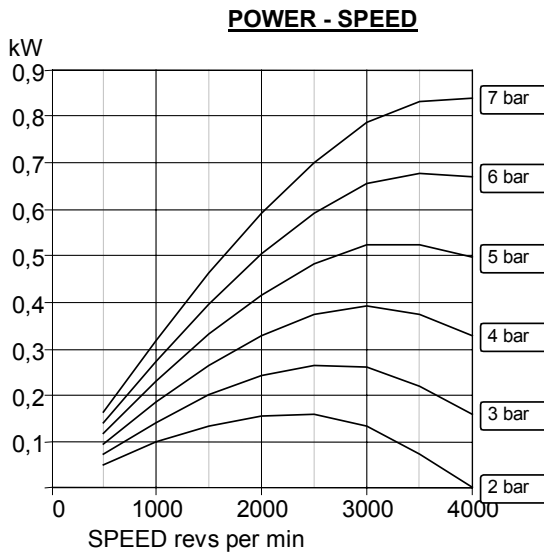
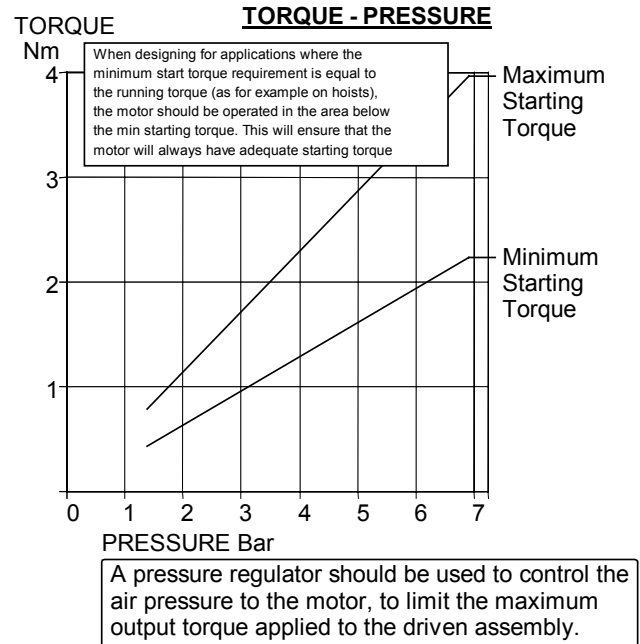
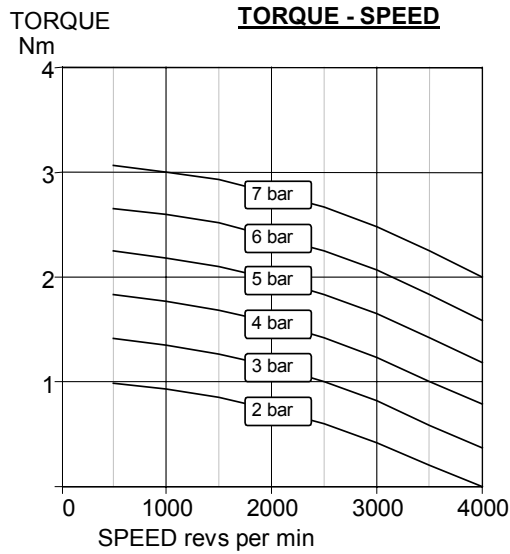
Mass 4.40 kg

**Note: With air inlet at port 'A',
rotation is clockwise looking on shaft.
For opposite rotation reverse ports.**

Exploded view with spare parts list

Item	Part No.	Description	Qty	Kit No.
01	720-001	BSP Body	1	
02	740-518	Front Plate NEMA 56C	1	
03	740-002	End Plate	1	
04	-	Gasket	2	729-910
05	720-910	Rotor Shaft Assy	1	
06	720-006	Ejection Ring	2	
07	-	Blades	4	729-910
08	740-008	Cover Plate	1	
09-1	-	Gasket	1	729-910
09-2	-	Gasket	1	729-910
09-3	-	Gasket	1	729-910
11	802-001	Screw	3	
12	809-007	Cap Screw	12	
13	-	Circlip	1	729-910
14	806-024	Dowel	4	
15	807-025	Bearing	1	
16	807-028	Bearing	1	
17	-	Oil Seal	1	729-910
18	-	O Ring	1	729-910
20	720-100	Seal Bearing Ring	1	
22	811-020	Key	1	
	729-910	V2 Seal Kit		
	820-023	Silencer 3/8 BSP	1	





Muffler supplied with motor.
Motor is reversible.

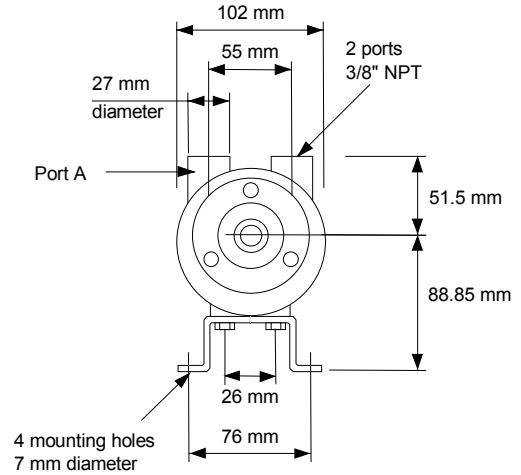
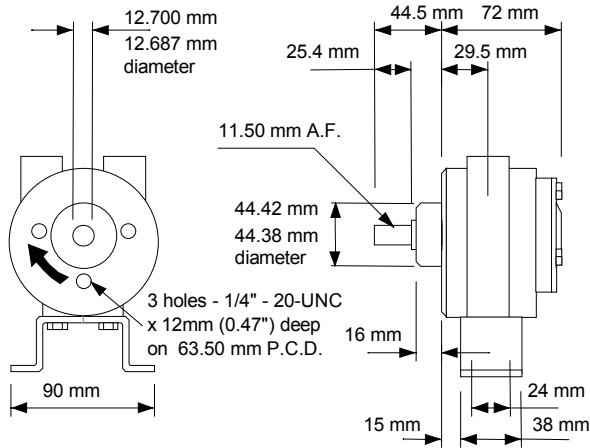
Attitude: The motor can be operated in all positions.
Maximum temperature -20°C to +80°C (-4°F to +176°F).

Max. Overhung Force on motor shaft 400 N (90 lbf.).
Axial loads should be kept to a minimum.

AIRLINE FILTRATION AND LUBRICATION

Use 64 micron filtration or better. Choose a lubricator suitable for the flow required. Prior to initial start-up, inject oil into the inlet port.
Lubricator drop rate 4-5 drops/minute continuous
Lubricator drop rate 9-12 drops/minute intermittent operation

Maximum continuous speed 4000 rpm



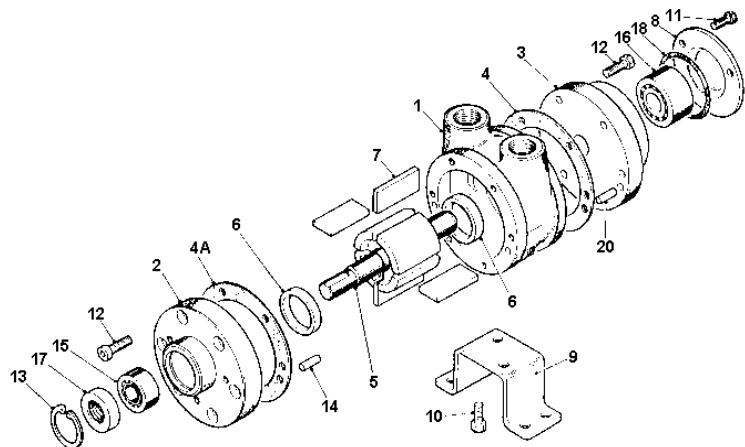
Attitude: The motor can be operated in all positions
 Maximum temperature -20°C to +80°C (-4°F to +176°F)
 Muffler supplied with motor

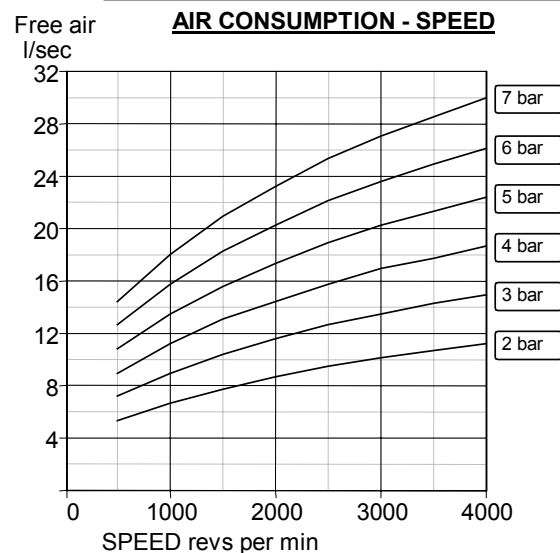
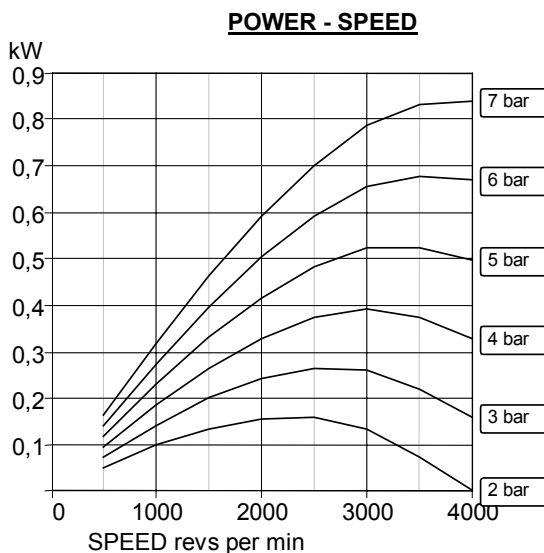
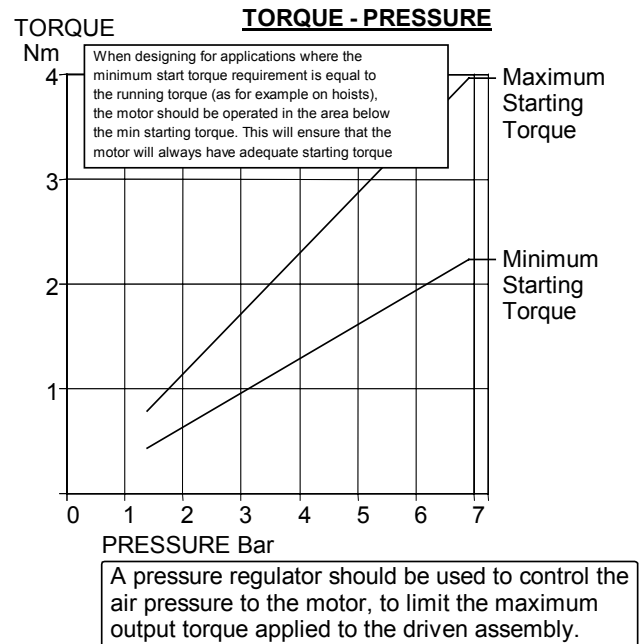
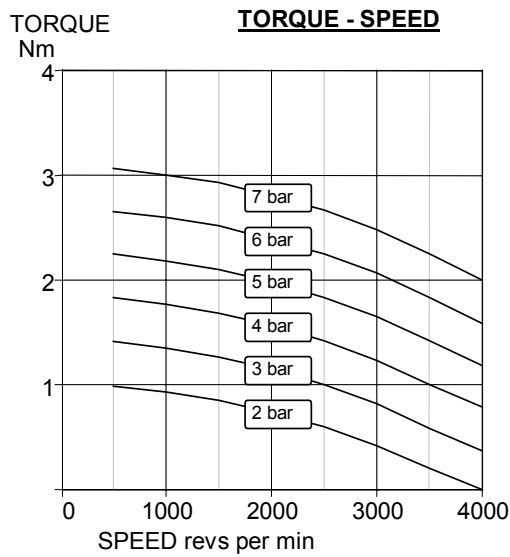
Max. Overhung Force on shaft 400 N (90 lbf.)
 Axial loads should be kept to a minimum
 Mass 3.30 kg

**Note: With air inlet at port 'A',
 rotation is clockwise looking on shaft.
 For opposite rotation reverse ports.**

Exploded view with spare parts list

Item	Part No.	Description	Qty	Kit No.
01	720-001	BSP Body	1	
02	740-003	Front Plate	1	
03	740-002	End Plate	1	
04	-	Gasket	2	729-910
04A-1	-	Gasket	1	729-910
04A-2	-	Gasket	1	729-910
04A-3	-	Gasket	1	729-910
05	720-911	Rotor Shaft Assy	1	
06	720-006	Ejection Ring	2	
07	-	Blades	4	729-910
08	740-008	Cover Plate	1	
09	720-023	Foot	1	
10	802-011	Screw	2	
12	809-007	Cap Screw	12	
13	-	Circlip	1	729-910
14	806-024	Dowel	4	
15	807-027	Bearing	1	
16	807-028	Bearing	1	
17	-	Oil Seal	1	729-910
18	-	O Ring	1	729-910
20	806-032	Dowel	2	
	729-910	V2 Seal Kit		
	820-023	Silencer 3/8 BSP	1	





Muffler supplied with motor.
Motor is reversible.

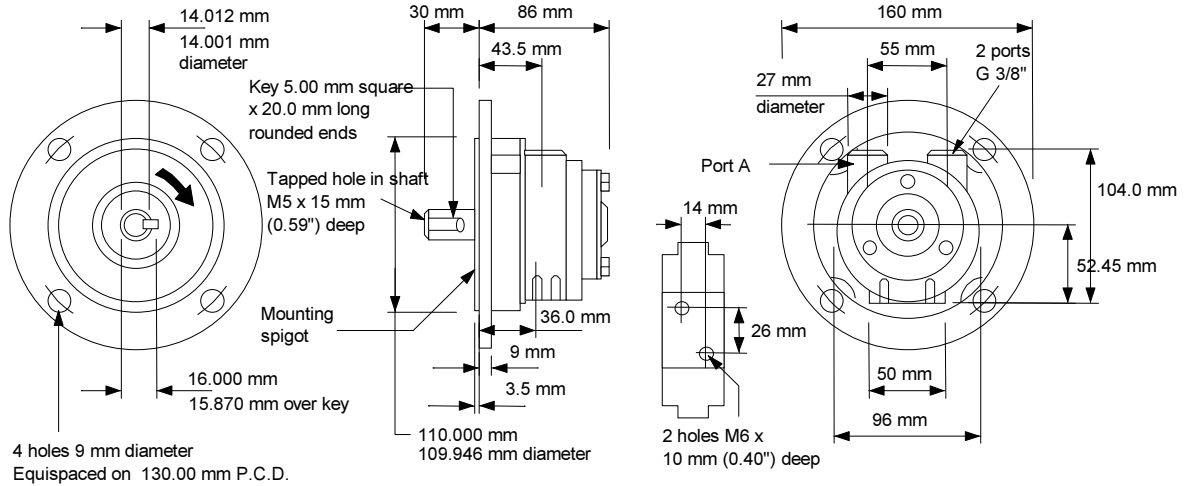
Attitude: The motor can be operated in all positions.
Maximum temperature -20°C to +80°C (-4°F to +176°F).

Max. Overhung Force on motor shaft 400 N (90 lbf.).
Axial loads should be kept to a minimum.

AIRLINE FILTRATION AND LUBRICATION

Use 64 micron filtration or better. Choose a lubricator suitable for the flow required. Prior to initial start-up, inject oil into the inlet port.
Lubricator drop rate 4-5 drops/minute continuous
Lubricator drop rate 9-12 drops/minute intermittent operation

Maximum continuous speed 4000 rpm



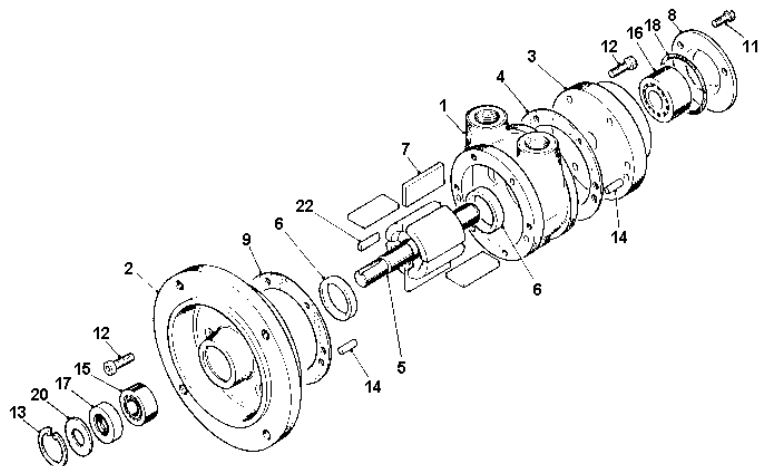
Attitude: The motor can be operated in all positions
 Maximum temperature -20°C to +80°C (-4°F to +176°F)
 Muffler supplied with motor

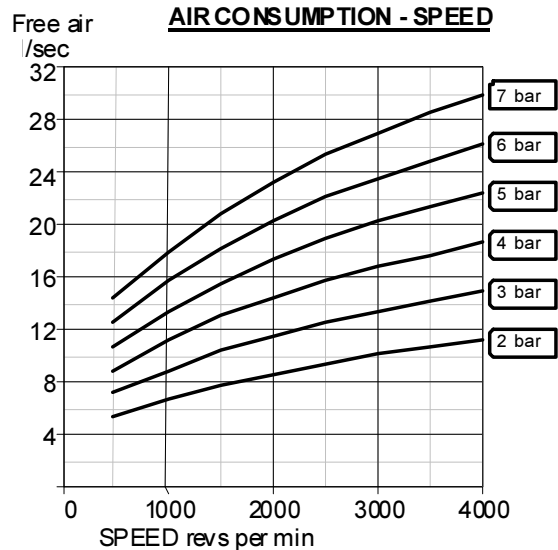
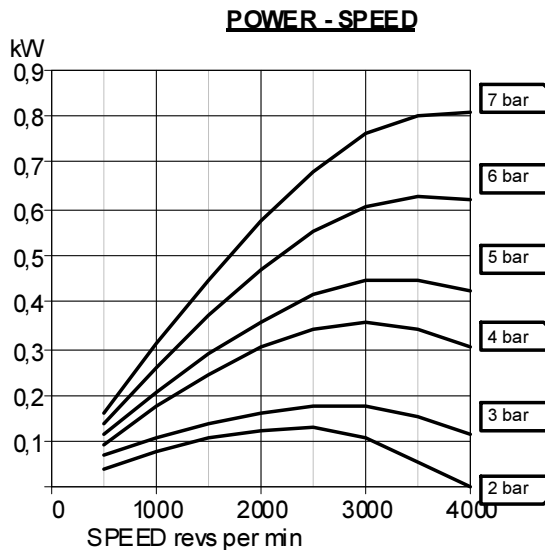
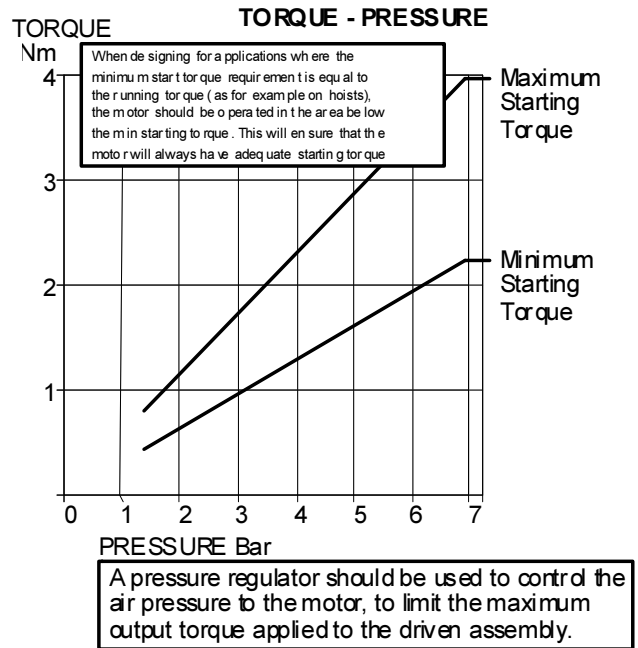
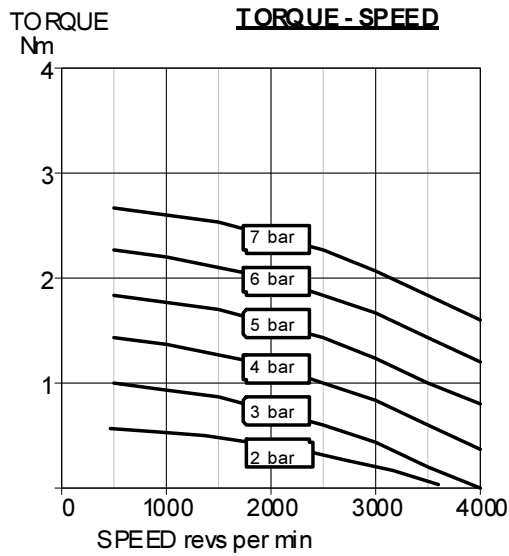
Max. Overhung Force on shaft 400 N (90 lbf.)
 Axial loads should be kept to a minimum
 Mass 4.40 kg

Note: With air inlet at port 'A', rotation is clockwise looking on shaft. For opposite rotation reverse ports.

Exploded view with spare parts list

Item	Part No.	Description	Qty	Kit No.
01	720-101	BSP Body	1	
02	740-535	Front Plate D71	1	
03	740-002	End Plate	1	
04	-	Gasket	2	729-910
05	720-920	Rotor Shaft Assy	1	
06	720-006	Ejection Ring	2	
07	-	Blades	4	729-910
08	740-008	Cover Plate	1	
09-1	-	Gasket	1	729-910
09-2	-	Gasket	1	729-910
09-3	-	Gasket	1	729-910
11	802-001	Screw	3	
12	809-007	Cap Screw	12	
13	-	Circlip	1	729-910
14	806-024	Dowel	4	
15	807-025	Bearing	1	
16	807-028	Bearing	1	
17	-	Oil Seal	1	729-910
18	-	O Ring	1	729-910
20	720-100	Seal Bearing Ring	1	
22	811-027	Key	1	
	729-910	V2 Seal Kit		
	820-003	Silencer 3/8 BSP	1	





Muffler supplied with motor.
Motor is reversible.

Attitude: The motor can be operated in all positions.
Maximum temperature -20°C to +80°C (-4°F to +176°F).

Max. Overhung Force on motor shaft 400 N (90 lbf.).
Axial loads should be kept to a minimum.

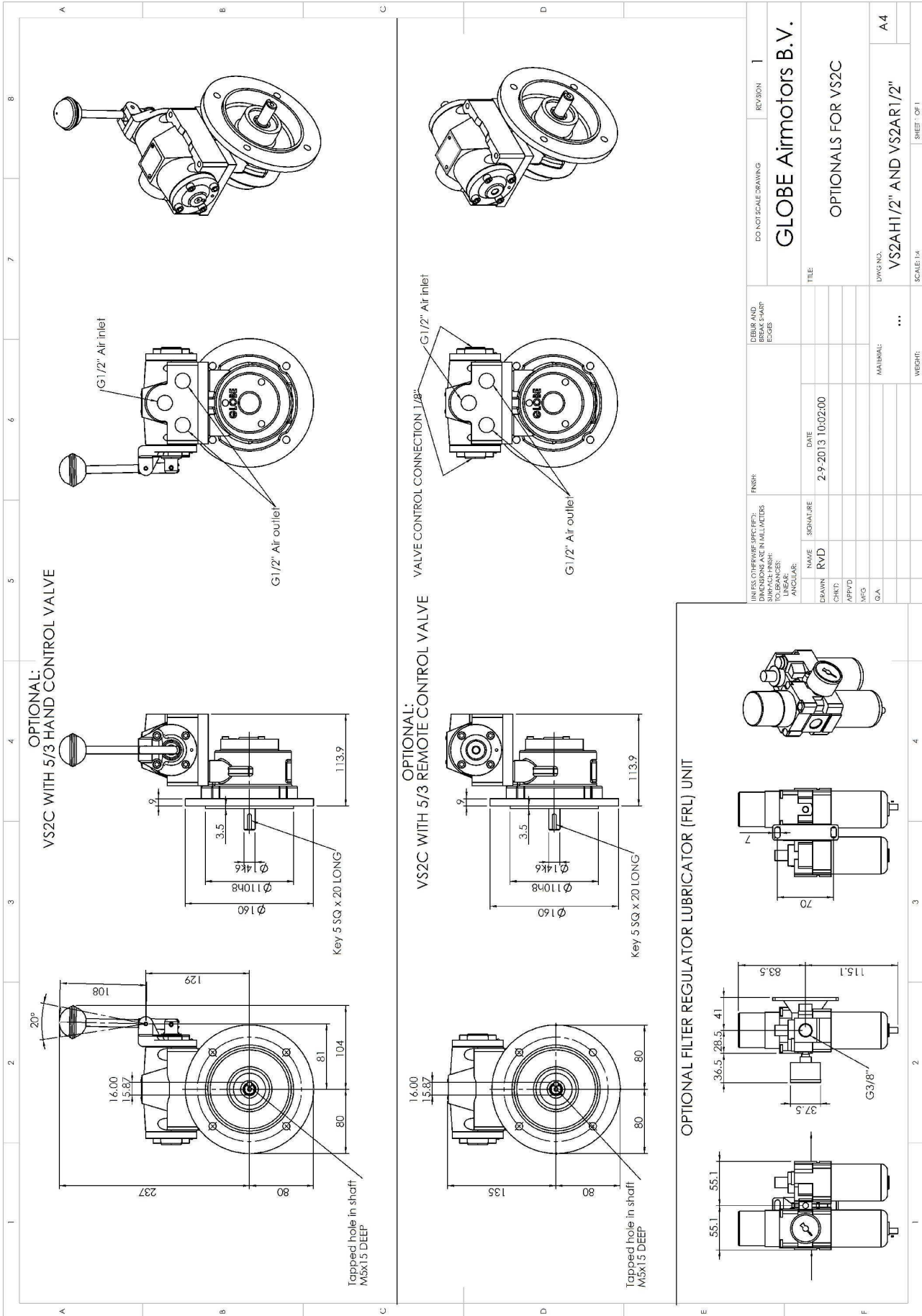
AIRLINE FILTRATION AND LUBRICATION

Use 64 micron filtration or better. Choose a lubricator suitable for the flow required. Prior to initial start-up, inject oil into the inlet port.
Lubricator drop rate 4-5 drops/minute continuous
Lubricator drop rate 9-12 drops/minute intermittent operation

Maximum continuous speed 4000 rpm

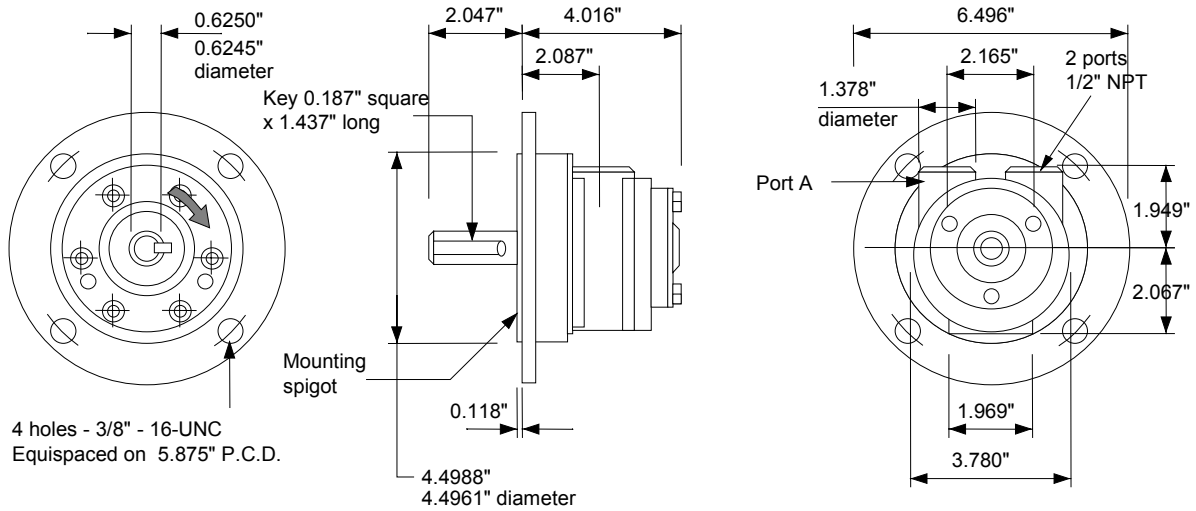


OPTIONALS



UNLESS OTHERWISE SPECIFIED: DIMENSIONS ARE IN MILLIMETERS		FINISH: SURFACE FINISH: TO DIMENSIONS: ANGULAR:		NAME RVD	SIGNATURE	DATE 2-9-2013 10:02:00	TITLE OPTIONALS FOR VS2C	DO NOT SCALE DRAWING	REVISION 1
DRAWN	CHKD	APPRD	MFG	Q.A.					
MATERIAL: ...							DWG NO. VS2AH1/2" AND VS2AR1/2"	SCALE: 1:1	
WEIGHT:							SHEET: OF 1		A4

GLOBE Airmotors B.V.



Attitude: The motor can be operated in all positions.
 Maximum temperature -20°C to +80°C (-4°F to +176°F)
 Muffler supplied with motor.

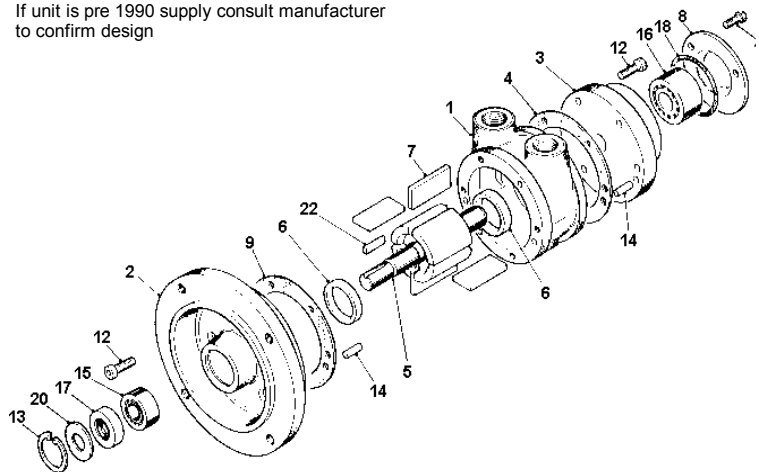
Max. Overhung Force on shaft 170 N (40 lbf.).
 Axial loads should be kept to a minimum.
 Mass 5.00 kg (11 lb.).

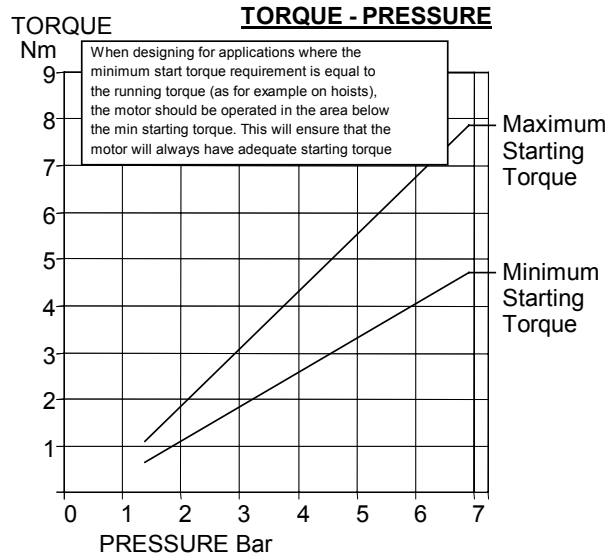
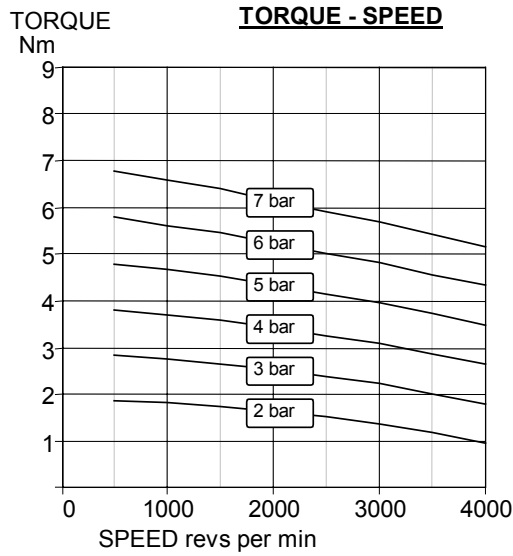
**Note: With air inlet at port 'A',
 rotation is clockwise looking on shaft.
 For opposite rotation reverse ports.**

Exploded view with spare parts list

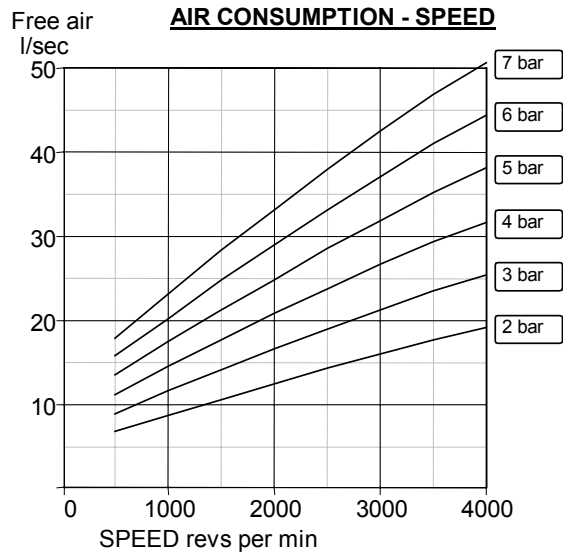
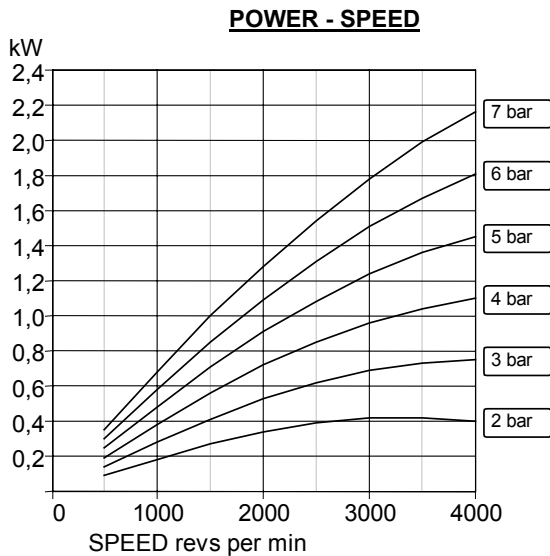
Item	Part No.	Description	Qty	Kit No.
01	740-001	BSP Body	1	
02	740-518	Front Plate NEMA	1	
03	740-002	End Plate	1	
04	-	Gasket	2	749-910
05	740-910	Rotor Shaft Assy	1	
06	740-006	Ejection Ring	2	
07	-	Blades	4	749-910
08	740-008	Cover Plate	1	
09-1	-	Gasket	1	749-910
09-2	-	Gasket	1	749-910
09-3	-	Gasket	1	749-910
11	802-001	Screw	3	
12	809-007	Cap Screw	12	
13	-	Circlip	1	749-910
14	806-024	Dowel	4	
15	807-025	Bearing	1	
16	807-028	Bearing	1	
17	-	Oil Seal	1	749-910
18	-	O Ring	1	749-910
20	720-100	Seal Backing Ring	1	
22	811-020	Key	1	
	749-910	V4 Seal Kit		
	820-024	Silencer 1/2 BSP	1	

If unit is pre 1990 supply consult manufacturer to confirm design





A pressure regulator should be used to control the air pressure to the motor, to limit the maximum output torque applied to the driven assembly.



Muffler supplied with motor.
Motor is reversible.

Attitude: The motor can be operated in all positions.
Maximum temperature -20°C to +80°C (-4°F to +176°F).

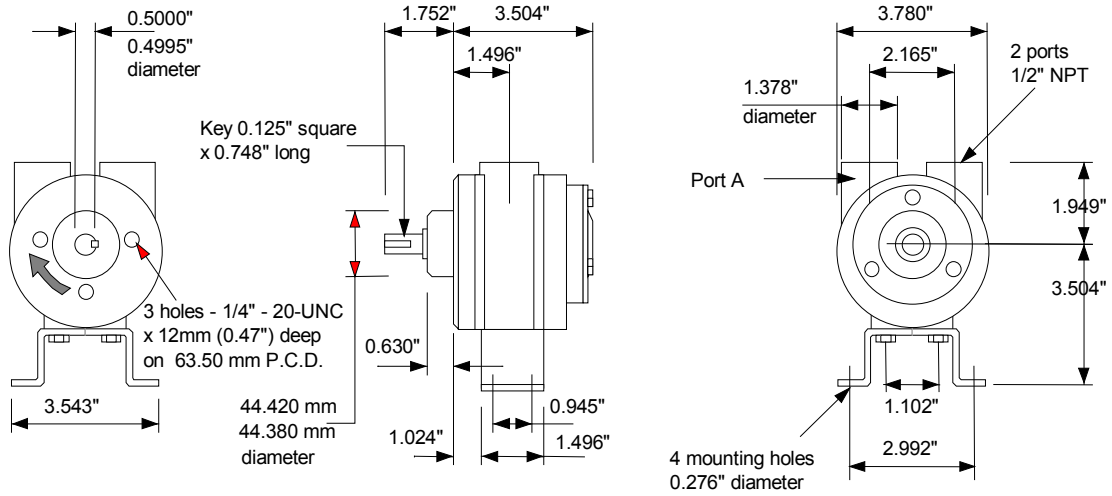
Max. Overhung Force on motor shaft 170 N (40 lbf.).
Axial loads should be kept to a minimum.

AIRLINE FILTRATION AND LUBRICATION

Use 64 micron filtration or better. Choose a lubricator suitable for the flow required. Prior to initial start-up, inject oil into the inlet port.
Lubricator drop rate 4-5 drops/minute continuous operation.
Lubricator drop rate 9-12 drops/minute intermittent operation.

Maximum continuous speed 4000 rpm

VA4J

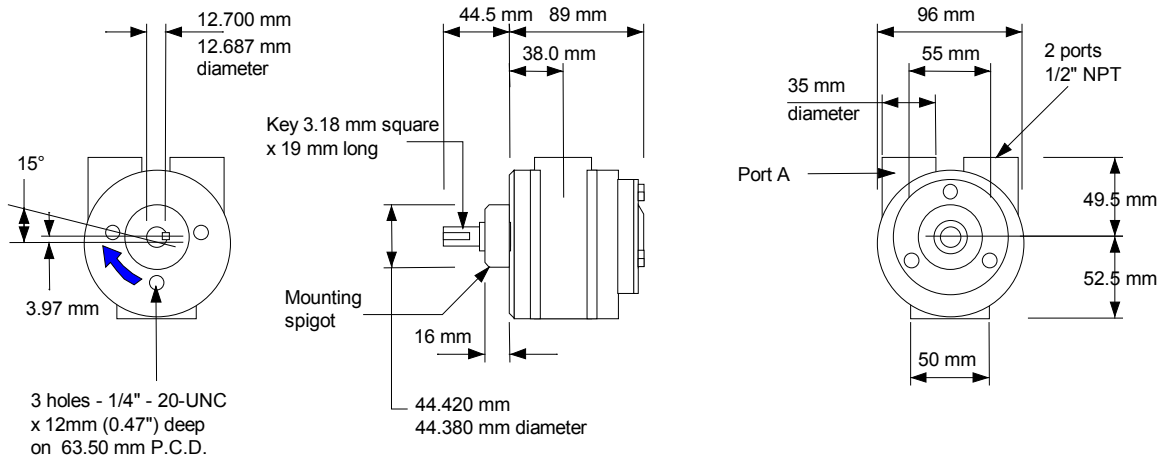


Attitude: The motor can be operated in all positions.
Maximum temperature -20°C to +80°C (-4°F to +176°F).
Muffler supplied with motor.

Max. Overhung Force on shaft 170 N (40 lbf.).
Axial loads should be kept to a minimum.
Mass 3.80 kg (8.38 lb.).

Note: With air inlet at port 'A', rotation is clockwise looking on shaft. For opposite rotation reverse ports.

VA4X



Attitude: The motor can be operated in all positions.
Maximum temperature -20°C to +80°C (-4°F to +176°F).
Muffler supplied with motor.

Max. Overhung Force on shaft 170 N (40 lbf.).
Axial loads should be kept to a minimum.
Mass 3.80 kg (8.38 lb.).

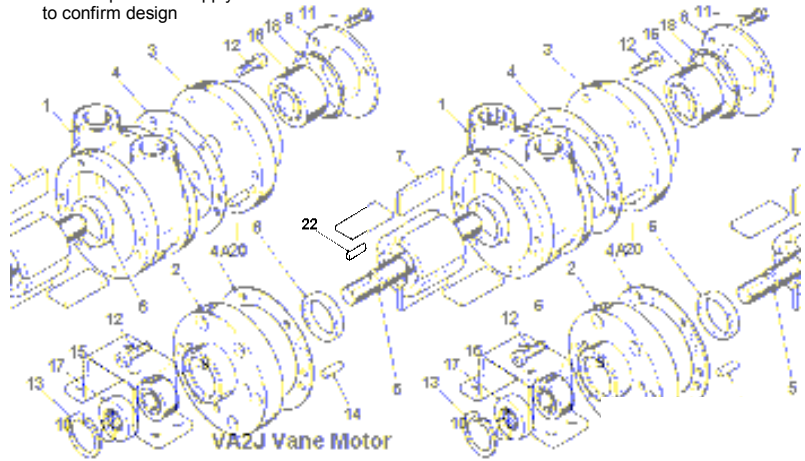
Note: With air inlet at port 'A', rotation is clockwise looking on shaft. For opposite rotation reverse ports. Motor is reversible.

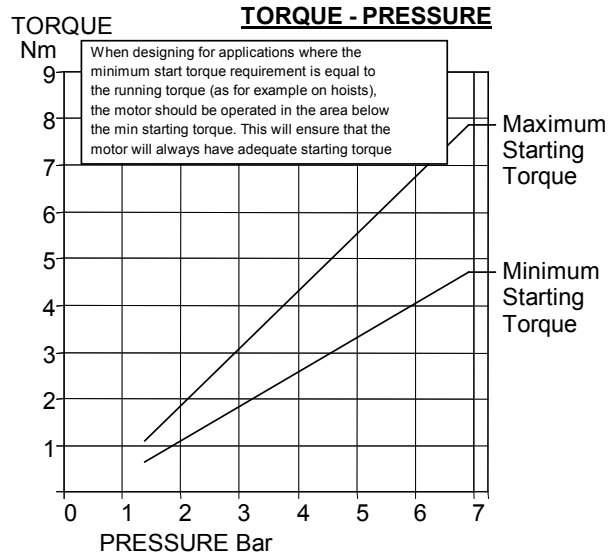
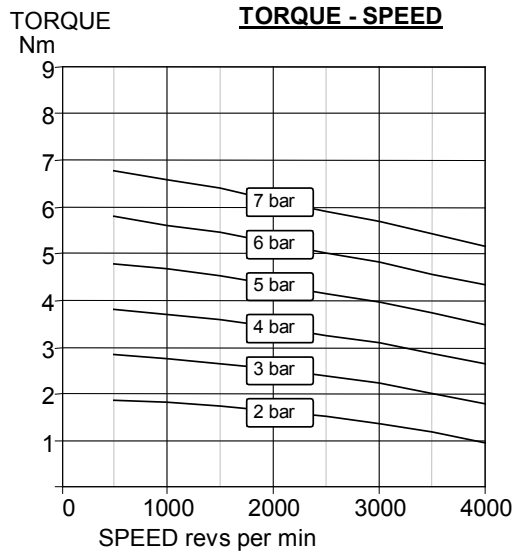


Exploded view with spare parts list

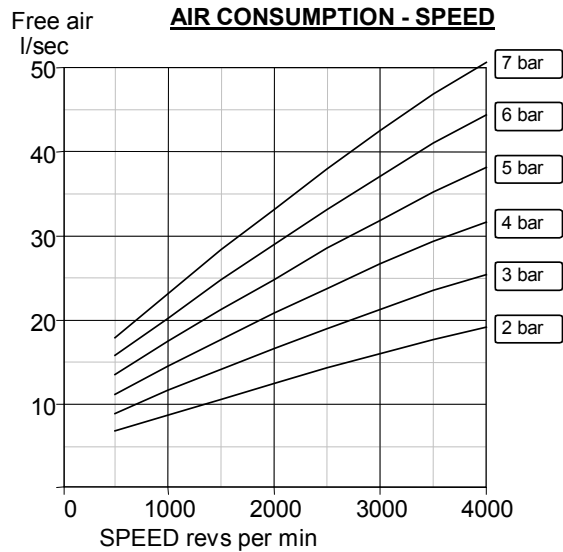
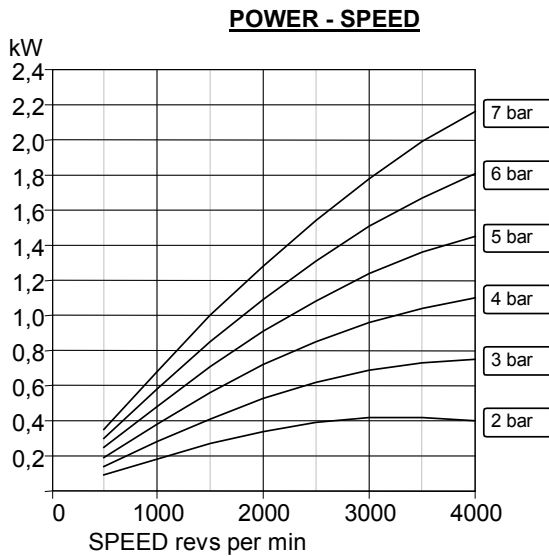
Item	Part No.	Description	Qty	Kit No.
01	740-001	Body BSP	1	
02	740-003	Front Plate	1	
03	740-002	End Plate	1	
04	-	Gasket	2	749-910
04A-1	-	Gasket	1	749-910
04A-2	-	Gasket	1	749-910
04A-3	-	Gasket	1	749-910
05	740-911	Rotor Shaft Assy	1	
06	740-006	Ejection Ring	2	749-910
07	-	Blades	4	749-910
08	740-008	Cover Plate	1	
09	740-023	Foot	1	
10	802-011	Screw	4	
11	802-001	Screw	3	
12	809-007	Cap Screw	12	
13	-	Circlip	1	749-910
14	806-024	Dowel	2	
15	807-027	Bearing	1	
16	807-028	Bearing	1	
17	-	Oil Seal	1	749-910
18	-	O Ring	1	749-910
20	806-032	Dowel	2	
22	811-023	Key	1	
	749-910	V4 Seal Kit		
	820-024	Silencer 1/2 BSP	1	

If unit is pre 1990 supply consult manufacturer to confirm design





A pressure regulator should be used to control the air pressure to the motor, to limit the maximum output torque applied to the driven assembly.



Muffler supplied with motor.
Motor is reversible.

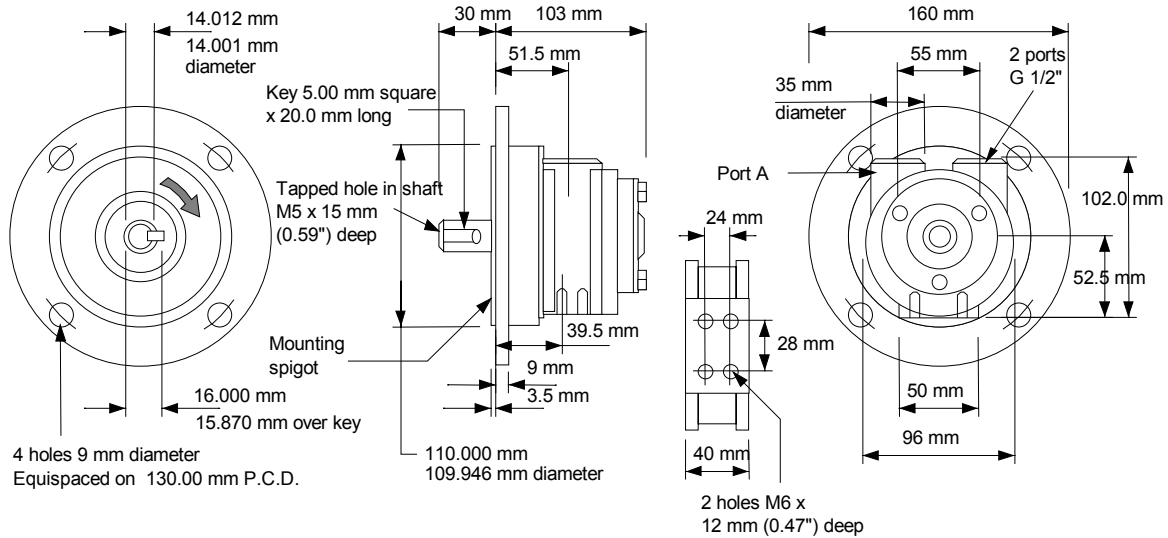
Attitude: The motor can be operated in all positions.
Maximum temperature -20°C to +80°C (-4°F to +176°F).

Max. Overhung Force on motor shaft 170 N (40 lbf.).
Axial loads should be kept to a minimum.

AIRLINE FILTRATION AND LUBRICATION

Use 64 micron filtration or better. Choose a lubricator suitable for the flow required. Prior to initial start-up, inject oil into the inlet port.
Lubricator drop rate 4-5 drops/minute continuous operation.
Lubricator drop rate 9-12 drops/minute intermittent operation.

Maximum continuous speed 4000 rpm



Attitude: The motor can be operated in all positions.
 Maximum temperature -20°C to +80°C (-4°F to +176°F).
 Muffler supplied with motor.

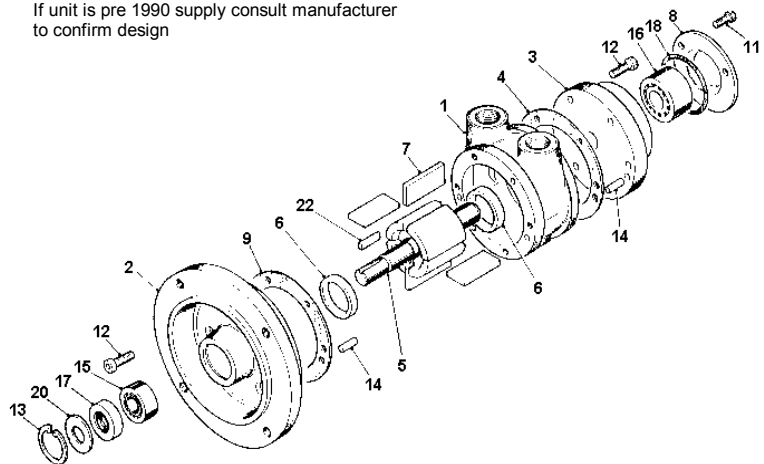
Max. Overhung Force on shaft 170 N (40 lbf.).
 Axial loads should be kept to a minimum.
 Mass 5.00 kg

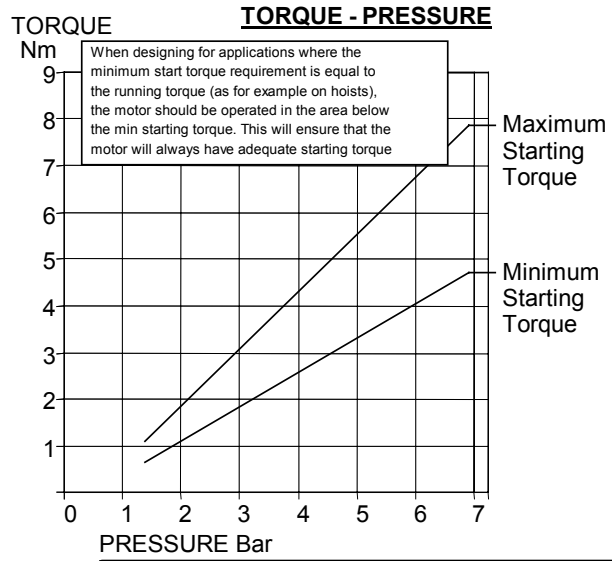
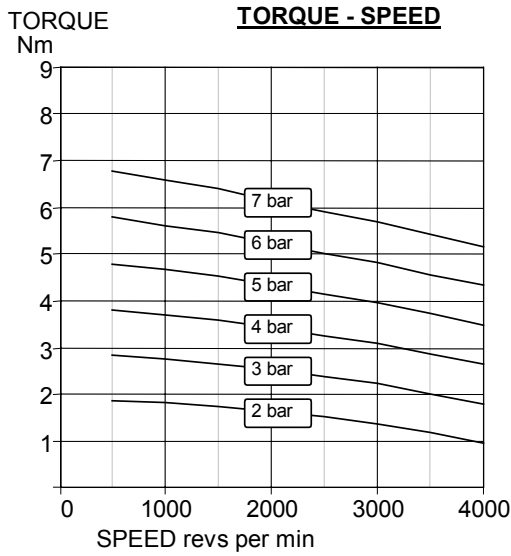
**Note: With air inlet at port 'A',
 rotation is clockwise looking on shaft.
 For opposite rotation reverse ports.**

Exploded view with spare parts list

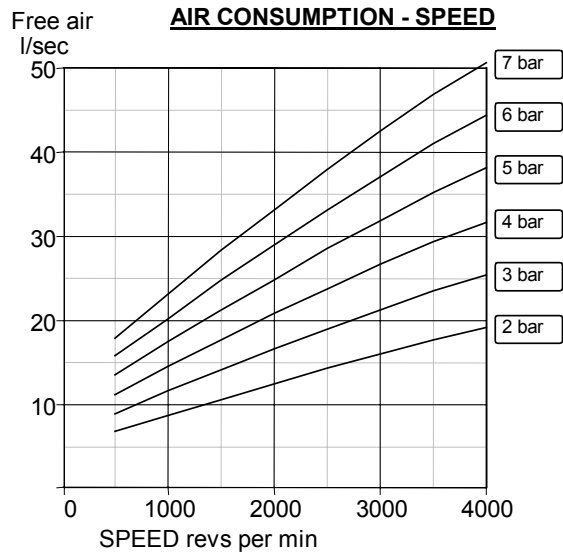
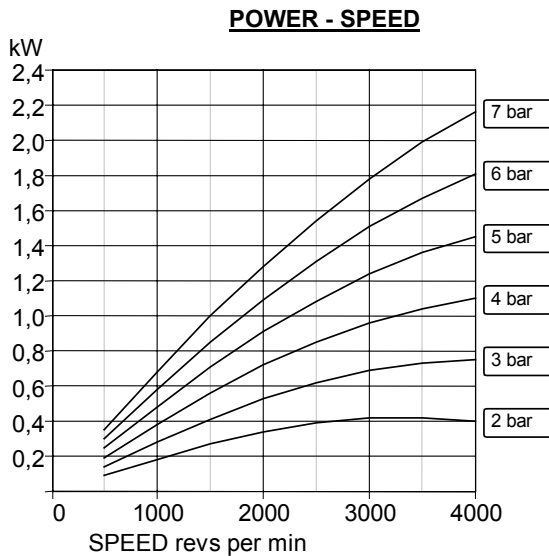
Item	Part No.	Description	Qty	Kit No.
01	740-101	Body BSP	1	
02	740-535	Front Plate D71	1	
03	740-002	End Plate	1	
04	-	Gasket	2	749-910
05	740-920	Rotor Shaft Assy	1	
06	740-006	Ejection Ring	2	
07	-	Blades	4	749-910
08	740-008	Cover Plate	1	
09-1	-	Gasket	1	749-910
09-2	-	Gasket	1	749-910
09-3	-	Gasket	1	749-910
11	802-001	Screw	3	
12	809-007	Cap Screw	12	
13	-	Circlip	1	749-910
14	806-024	Dowel	4	
15	807-025	Bearing	1	
16	807-028	Bearing	1	
17	-	Oil Seal	1	749-910
18	-	O Ring	1	749-910
20	720-100	Seal Backing Ring	1	
22	811-027	Key	1	
	749-910	V4 Seal Kit		
	820-004	Silencer 1/2 BSP	1	

If unit is pre 1990 supply consult manufacturer to confirm design





A pressure regulator should be used to control the air pressure to the motor, to limit the maximum output torque applied to the driven assembly.



Muffler supplied with motor.
Motor is reversible.

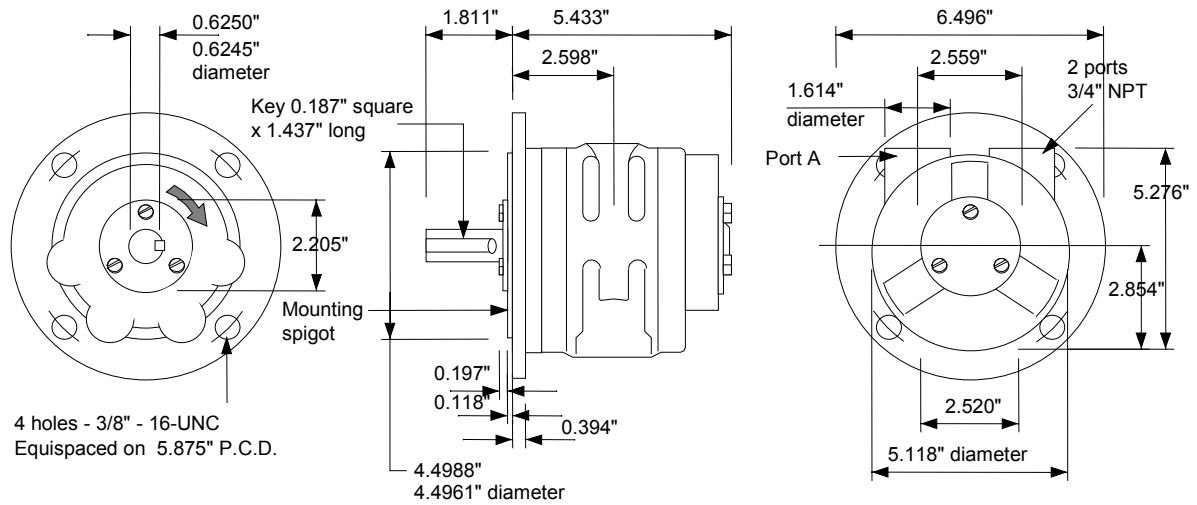
Attitude: The motor can be operated in all positions.
Maximum temperature -20°C to +80°C (-4°F to +176°F).

Max. Overhung Force on motor shaft 170 N (40 lbf.).
Axial loads should be kept to a minimum.

AIRLINE FILTRATION AND LUBRICATION

Use 64 micron filtration or better. Choose a lubricator suitable for the flow required. Prior to initial start-up, inject oil into the inlet port.
Lubricator drop rate 4-5 drops/minute continuous operation.
Lubricator drop rate 9-12 drops/minute intermittent operation.

Maximum continuous speed 4000 rpm



Attitude: The motor can be operated in all positions.
Maximum temperature -20°C to +80°C (-4°F to +176°F).
Muffler supplied with motor.

Max. Overhung Force on shaft 300 N (70 lbf.).
Axial loads should be kept to a minimum.

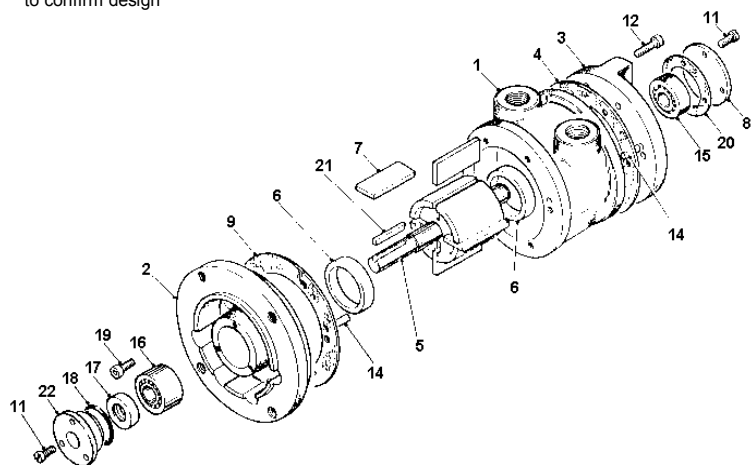
Mass 10.00 kg (22.04 lb.).

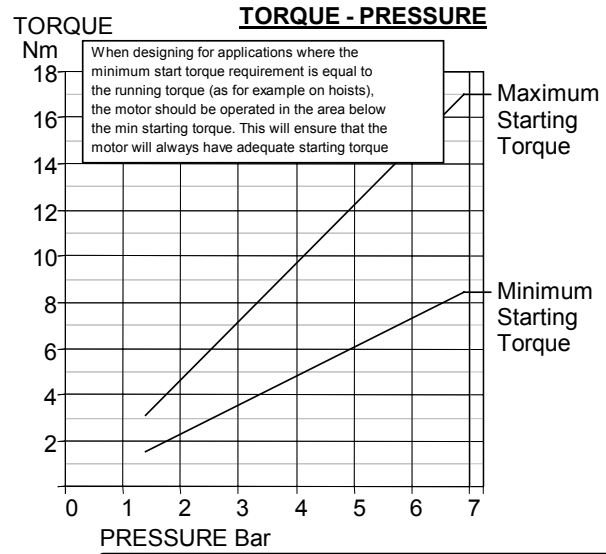
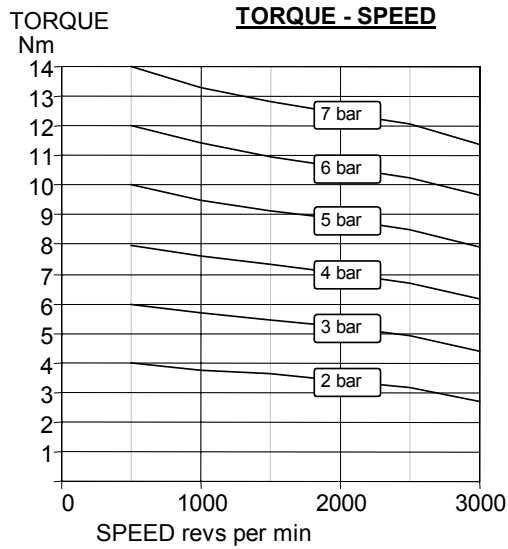
**Note: With air inlet at port 'A',
rotation is clockwise looking on shaft.
For opposite rotation reverse ports.**

Exploded view with spare parts list

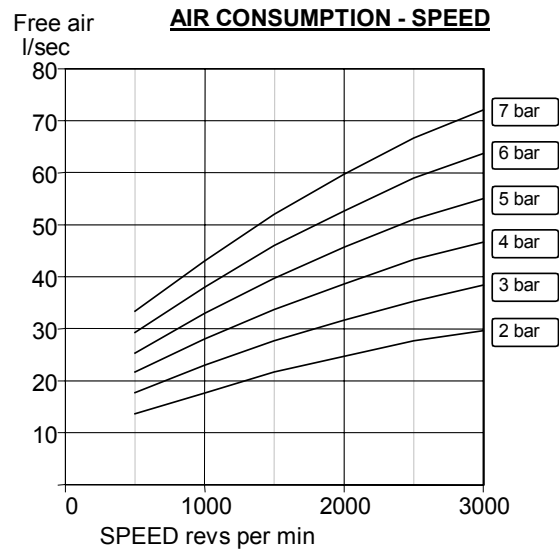
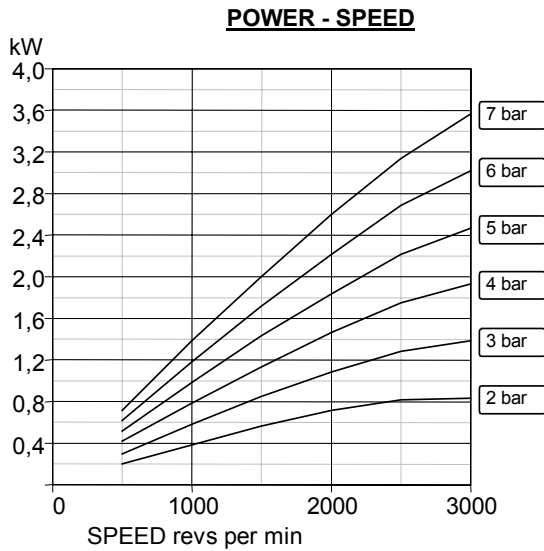
Item	Part No.	Description	Qty	Kit No.
01	760-001	Body BSP	1	
02	760-018	Front Plate NEMA 56C	1	
03	760-002	End Plate	1	
04	-	Gasket	2	769-910
05	760-911	Rotor Shaft Assy	1	
06	760-006	Ejection Ring	2	
07	-	Blades	4	769-910
08	760-008	Cover Plate	1	
09-1	-	Gasket	1	769-910
09-2	-	Gasket	1	769-910
09-3	-	Gasket	1	769-910
11	805-006	Screw	6	
12	809-009	Cap Screw	6	
14	806-024	Dowel	4	
15	807-028	Bearing	1	
16	807-025	Bearing	1	
17	-	Oil Seal	1	769-910
18	-	O Ring	1	769-910
19	809-007	Capscrew	6	
20	-	Gasket	1	769-910
21	811-020	Key	1	
22	760-007	Seal Housing	1	
	769-910	V6 Seal Kit		
	820-025	Silencer 3/4 BSP	1	

If unit is pre 1990 supply consult manufacturer to confirm design





A pressure regulator should be used to control the air pressure to the motor, to limit the maximum output torque applied to the driven assembly.



Muffler supplied with motor.
Motor is reversible.

Attitude: The motor can be operated in all positions.
Maximum temperature -20°C to +80°C (-4°F to +176°F).

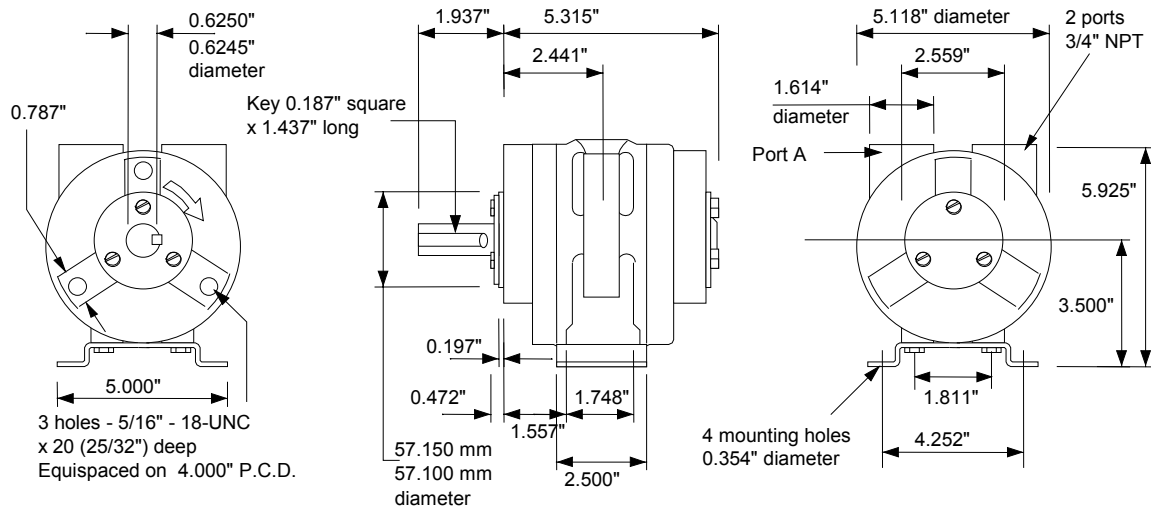
Max. Overhung Force on motor shaft 300 N (70 lbf.).
Axial loads should be kept to a minimum.

AIRLINE FILTRATION AND LUBRICATION

Use 64 micron filtration or better. Choose a lubricator suitable for the flow required. Prior to initial start-up, inject oil into the inlet port.

Lubricator drop rate 5-6 drops/minute continuous operation.
Lubricator drop rate 10-12 drops/minute intermittent operation.

Maximum continuous speed 3000 rpm



Attitude: The motor can be operated in all positions.
Maximum temperature -20°C to +80°C (-4°F to +176°F).
Muffler supplied with motor.

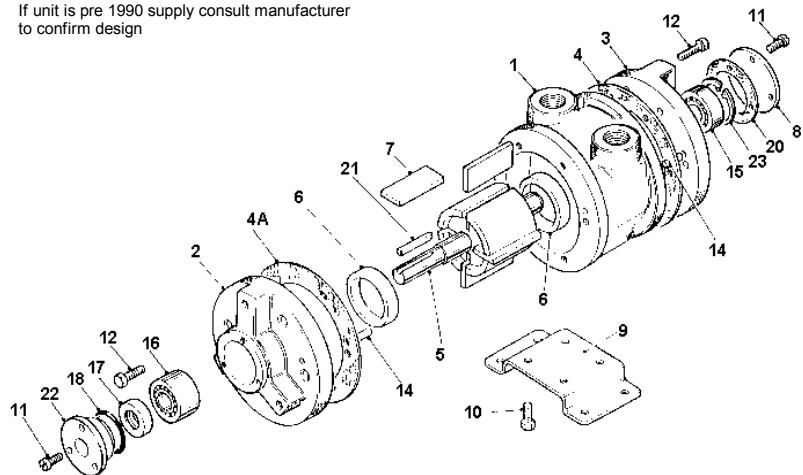
Max. Overhung Force on shaft 300 N (70 lbf.).
Axial loads should be kept to a minimum.
Mass 7.60 kg (16.75 lb.).

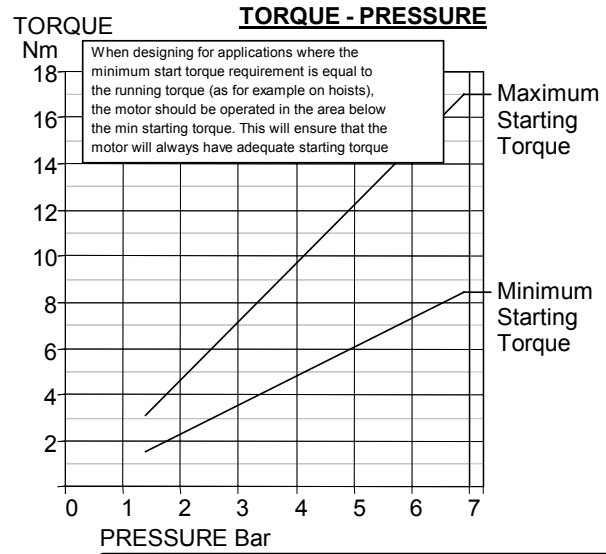
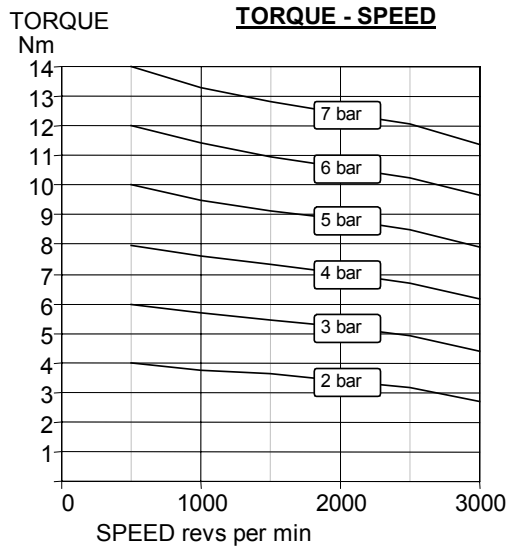
**Note: With air inlet at port 'A',
rotation is clockwise looking on shaft.
For opposite rotation reverse ports.**

Exploded view with spare parts list

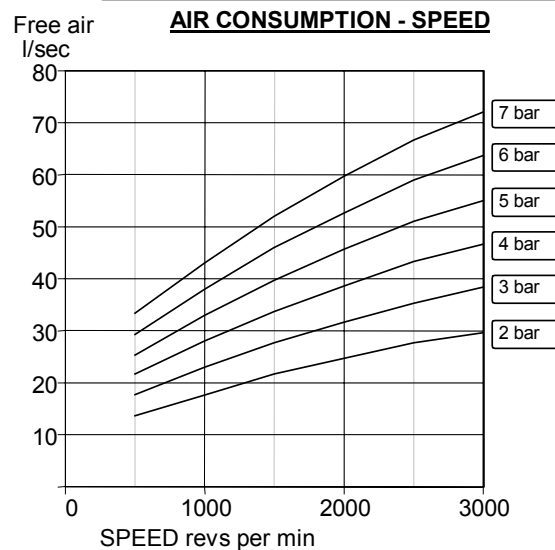
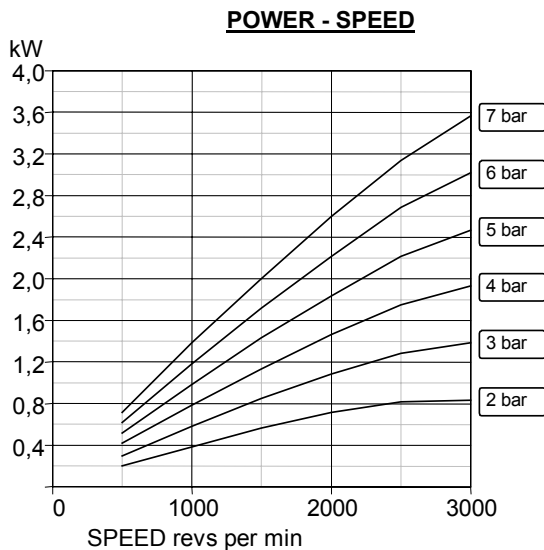
Item	Part No.	Description	Qty	Kit No.
01	760-001	Body BSP	1	
02	760-003	Front Plate	1	
03	760-002	End Plate	1	
04	-	Gasket	2	769-910
04A-1	-	Gasket	1	769-910
04A-2	-	Gasket	1	769-910
04A-3	-	Gasket	1	769-910
05	760-911	Rotor Shaft Assy	1	
06	760-006	Ejection Ring	2	
07	-	Blades	4	769-910
08	760-008	Cover Plate	1	
09	760-023	Foot	1	
10	802-012	Screw	4	
11	805-006	Screw	6	
12	809-009	Cap Screw	12	
14	806-024	Dowel	4	
15	807-025	Bearing	1	
16	807-028	Bearing	1	
17	-	Oil Seal	1	769-910
18	-	O Ring	1	769-910
20	-	Gasket	1	769-910
21	811-020	Key	1	
22	760-007	Seal Housing	1	
23	-	Circlip	1	769-910
	769-910	V6 Seal Kit		
	820-025	Silencer 3/4 BSP	1	

If unit is pre 1990 supply consult manufacturer to confirm design





A pressure regulator should be used to control the air pressure to the motor, to limit the maximum output torque applied to the driven assembly.



Muffler supplied with motor.
Motor is reversible.

Attitude: The motor can be operated in all positions.
Maximum temperature -20°C to +80°C (-4°F to +176°F).

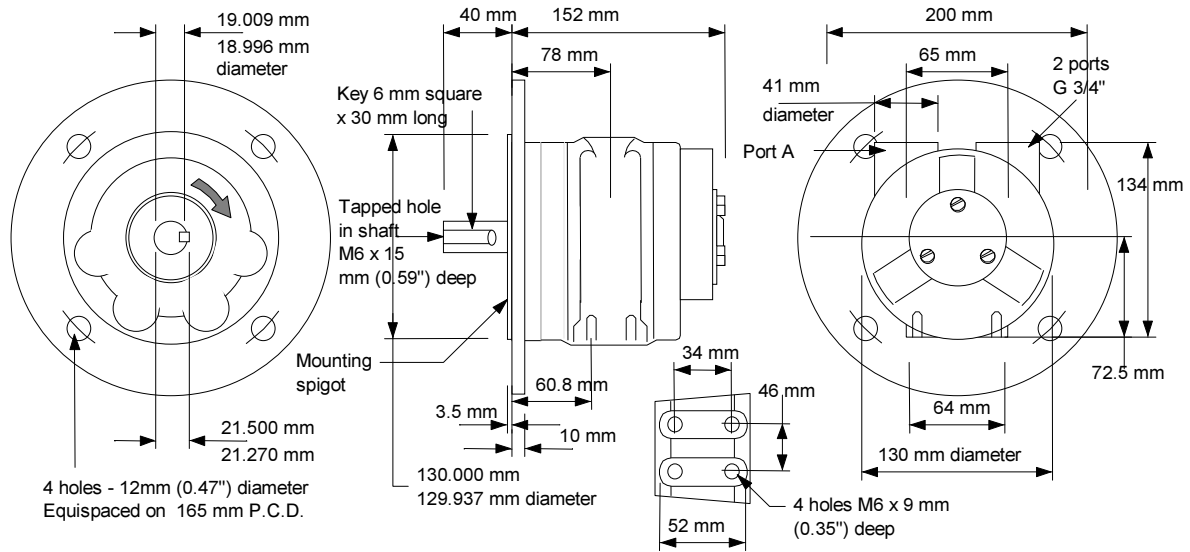
Max. Overhung Force on motor shaft 300 N (70 lbf.).
Axial loads should be kept to a minimum.

AIRLINE FILTRATION AND LUBRICATION

Use 64 micron filtration or better. Choose a lubricator suitable for the flow required. Prior to initial start-up, inject oil into the inlet port.

Lubricator drop rate 5-6 drops/minute continuous operation.
Lubricator drop rate 10-12 drops/minute intermittent operation.

Maximum continuous speed 3000 rpm



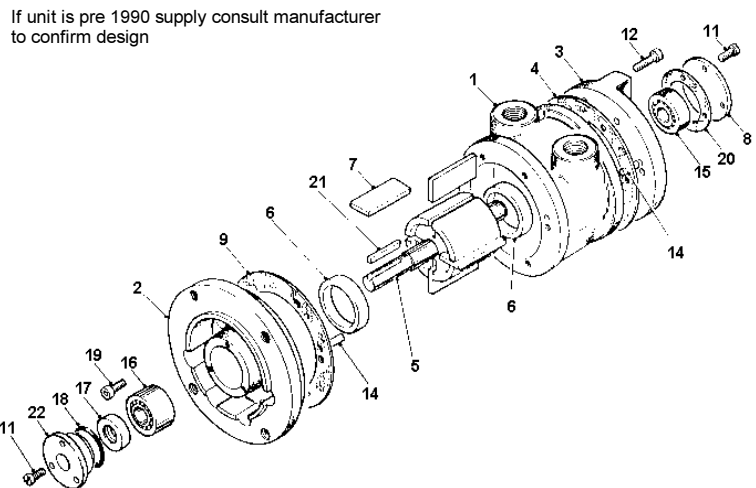
Attitude: The motor can be operated in all positions
 Maximum temperature -20°C to +80°C (-4°F to +176°F).
 Muffler supplied with motor.

Max. Overhung Force on shaft 300 N (70 lbf.).
 Axial loads should be kept to a minimum.
 Mass 11.30 kg (24.91 lb.).

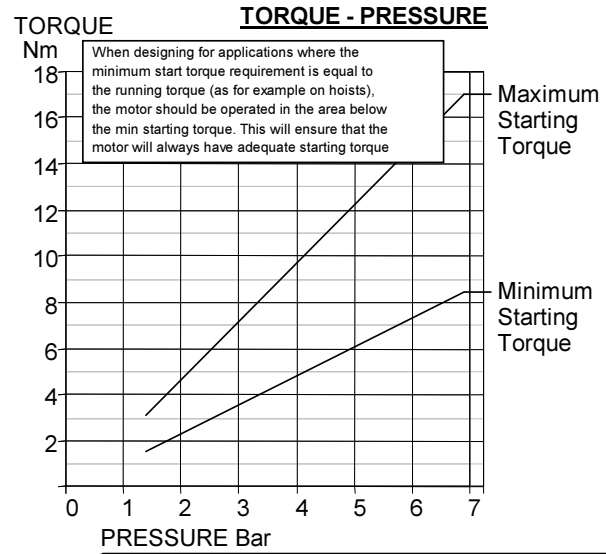
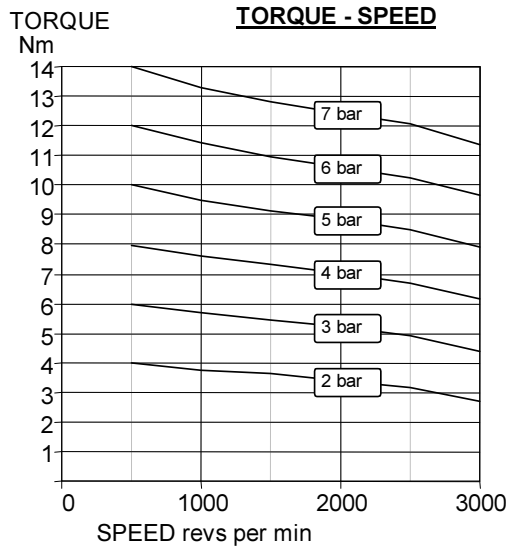
**Note: With air inlet at port 'A',
 rotation is clockwise looking on shaft.
 For opposite rotation reverse ports.**

Exploded view with spare parts list

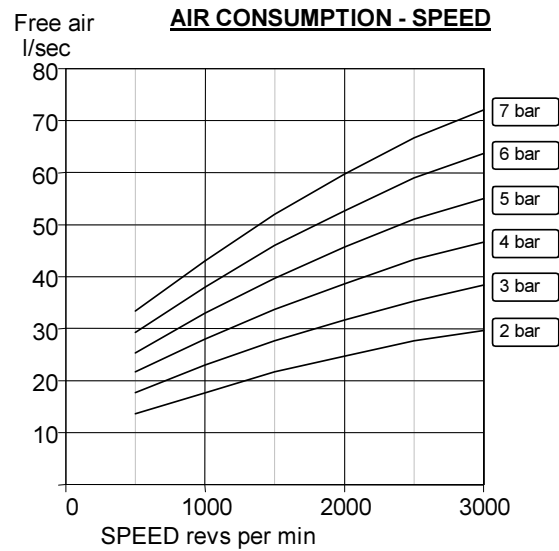
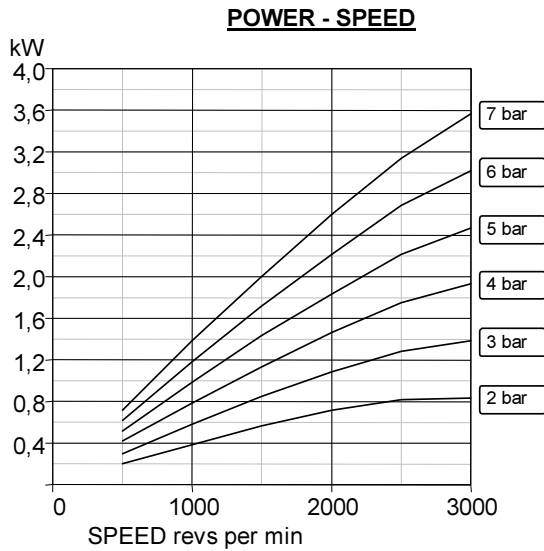
Item	Part No.	Description	Qty	Kit No.
01	760-101	Body	1	
02	760-036	Front Plate D80	1	
03	760-002	End Plate	1	
04	-	Gasket	2	769-910
05	760-921	Rotor Shaft Assy	1	
06	760-006	Ejection Ring	2	
07	-	Blades	4	769-910
08	760-008	Cover Plate	1	
09-1	-	Gasket	1	769-910
09-2	-	Gasket	1	769-910
09-3	-	Gasket	1	769-910
11	805-006	Screw	6	
12	809-009	Cap Screw	6	
14	806-024	Dowel	4	
15	807-025	Bearing	1	
16	807-026	Bearing	1	
17	-	Oil Seal	1	769-910
18	-	O Ring	1	769-910
19	809-007	Capscrew	6	
20	-	Gasket	1	769-910
21	811-001	Key	1	
22	780-007	Seal Housing	1	
	769-910	V6 Seal Kit		
	820-005	Silencer 3/4 BSP	1	



If unit is pre 1990 supply consult manufacturer to confirm design



A pressure regulator should be used to control the air pressure to the motor, to limit the maximum output torque applied to the driven assembly.



Muffler supplied with motor.
Motor is reversible.

Attitude: The motor can be operated in all positions.
Maximum temperature -20°C to +80°C (-4°F to +176°F).

Max. Overhung Force on motor shaft 300 N (70 lbf.).
Axial loads should be kept to a minimum.

AIRLINE FILTRATION AND LUBRICATION

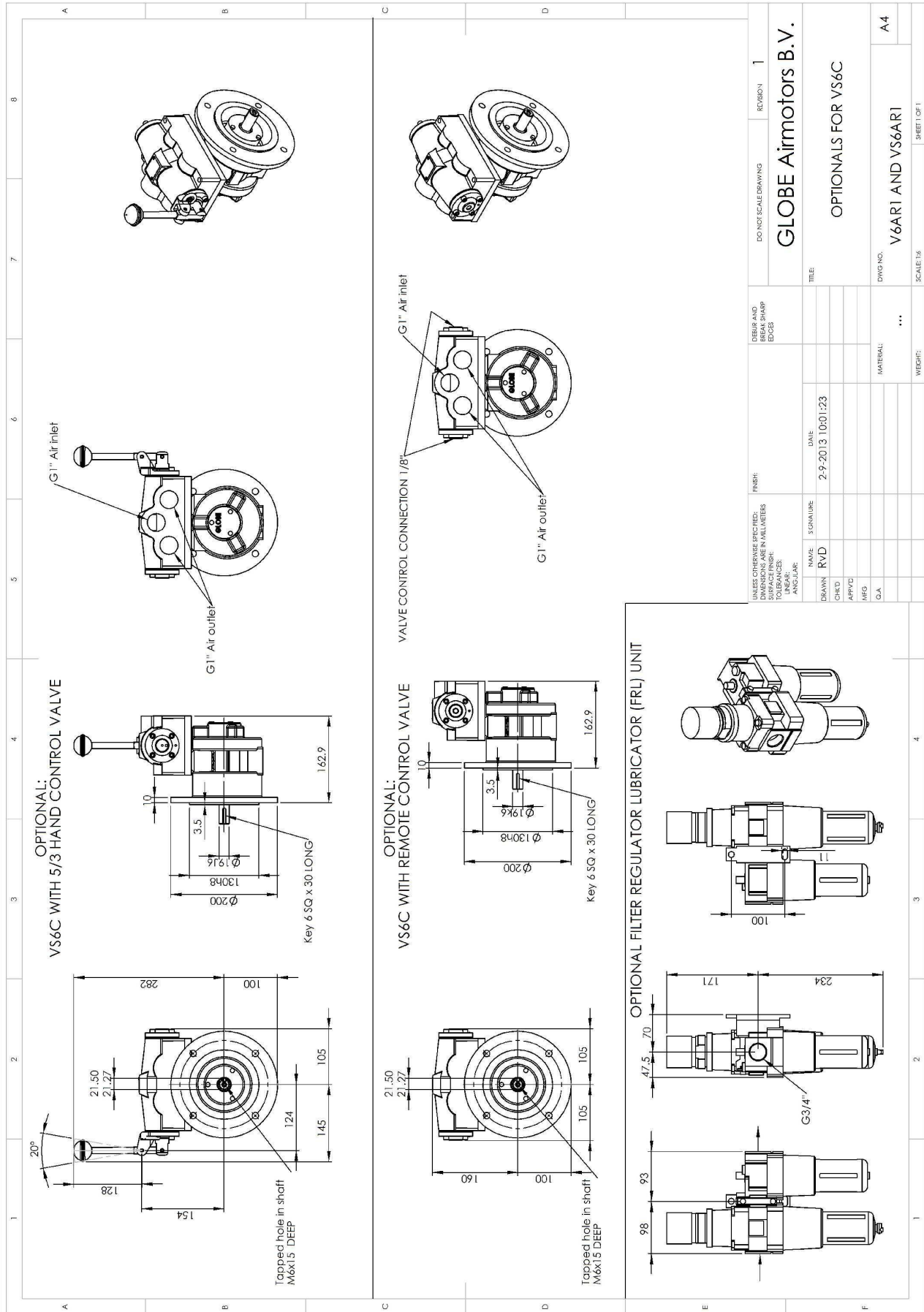
Use 64 micron filtration or better. Choose a lubricator suitable for the flow required. Prior to initial start-up, inject oil into the inlet port.

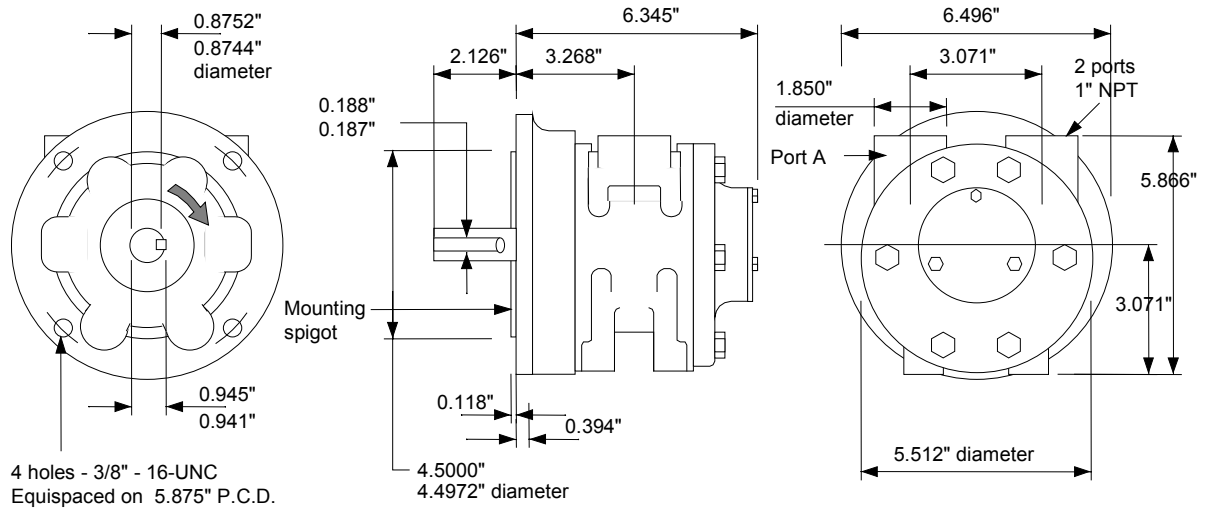
Lubricator drop rate 5-6 drops/minute continuous operation.
Lubricator drop rate 10-12 drops/minute intermittent operation.

Maximum continuous speed 3000 rpm



OPTIONAL





Attitude: The motor can be operated in all positions
 Maximum temperature -20°C to +80°C (-4°F to +176°F)
 Muffler supplied with motor

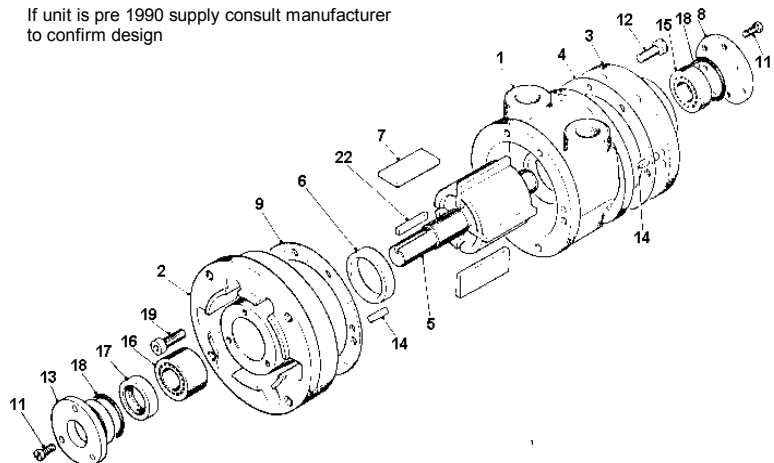
Max. Overhung Force on shaft 620 N (140 lbf.)
 Axial loads should be kept to a minimum
 Mass 11.80 kg (26.01 lb.)

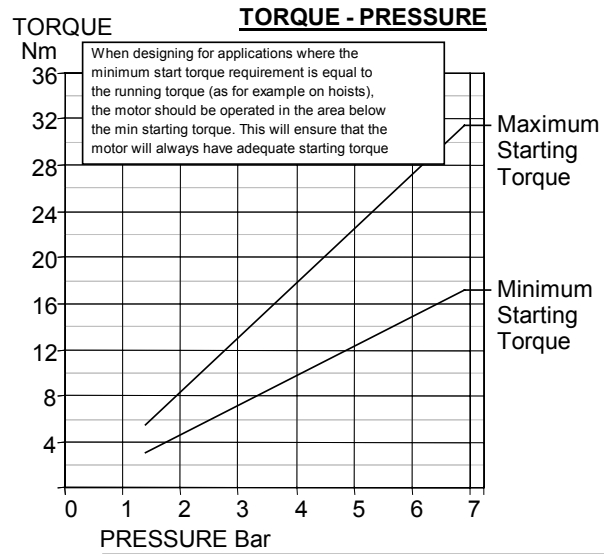
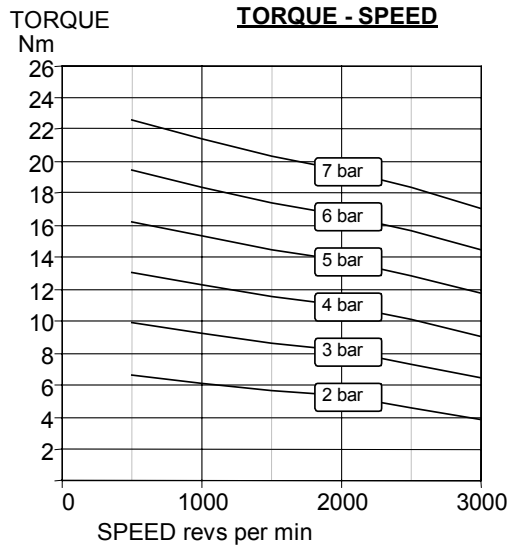
**Note: With air inlet at port 'A',
 rotation is clockwise looking on shaft.
 For opposite rotation reverse ports.**

Exploded view with spare parts list

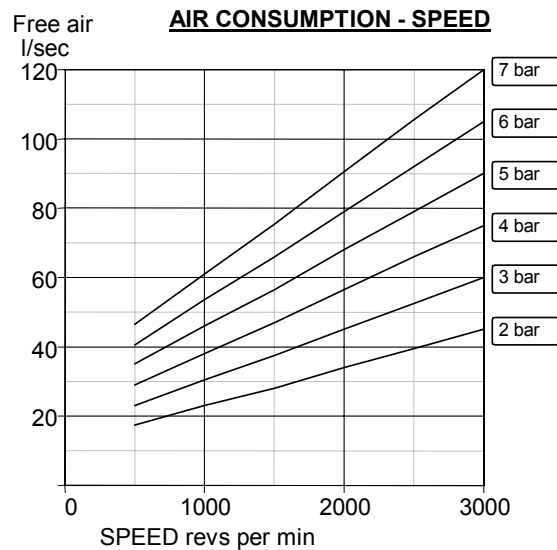
Item	Part No.	Description	Qty	Kit No.
01	780-001	Body BSP	1	
02	780-018	Front Plate NEMA 145 TC	1	
03	780-002	End Plate	1	
04	-	Gasket	2	789-910
05	780-910	Rotor Shaft Assy	1	
06	780-006	Ejection Ring	2	
07	-	Blades	4	789-910
08	740-008	Cover Plate	1	
09-1	-	Gasket	1	789-910
09-2	-	Gasket	1	789-910
09-3	-	Gasket	1	789-910
11	802-001	Screw	6	
12	802-032	Screw	6	
13	780-007	Seal Housing	1	
14	806-024	Dowel	4	
15	807-026	Bearing	1	
16	807-036	Bearing	1	
17	-	Oil Seal	1	789-910
18	-	O Ring	2	789-910
19	809-030	Screw	6	
22	811-020	Key	1	
	789-910	V8 Seal Kit		
	820-026	Silencer 1" BSP	1	

If unit is pre 1990 supply consult manufacturer to confirm design





A pressure regulator should be used to control the air pressure to the motor, to limit the maximum output torque applied to the driven assembly.



Muffler supplied with motor.
Motor is reversible.

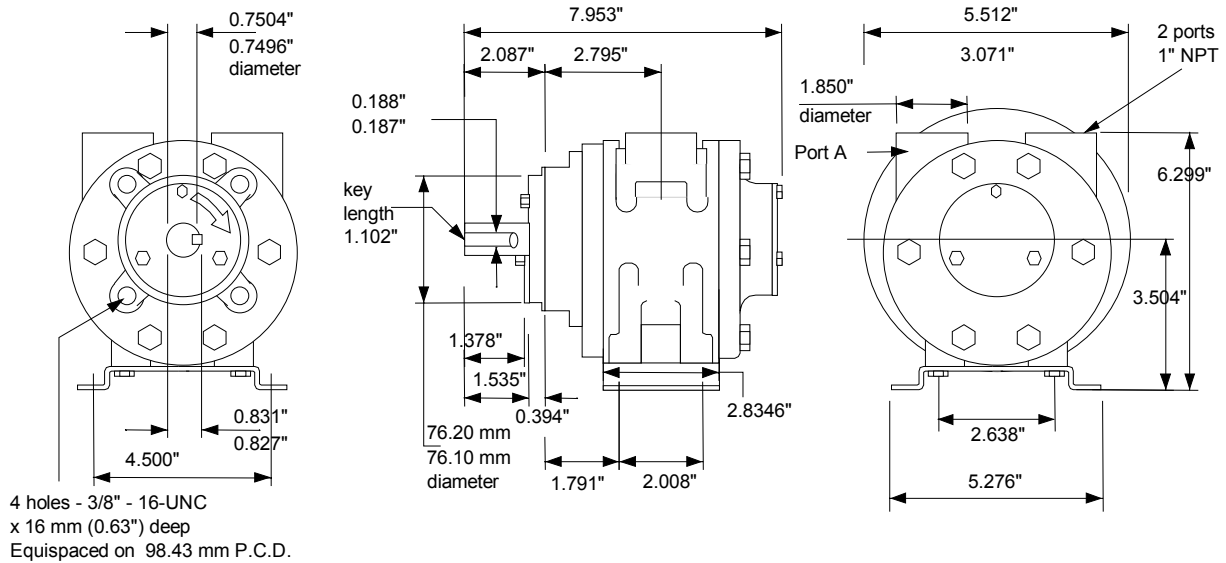
Attitude: The motor can be operated in all positions.
Maximum temperature -20°C to +80°C (-4°F to +176°F).

Max. Overhung Force on motor shaft 620 N (140 lbf.).
Axial loads should be kept to a minimum.

AIRLINE FILTRATION AND LUBRICATION

Use 64 micron filtration or better. Choose a lubricator suitable for the flow required. Prior to initial start-up, inject oil into the inlet port.
Lubricator drop rate 6-7 drops/minute continuous operation.
Lubricator drop rate 12-15 drops/minute intermittent operation.

Maximum continuous speed 3000 rpm



Attitude: The motor can be operated in all positions
 Maximum temperature -20°C to +80°C (-4°F to +176°F)
 Muffler supplied with motor

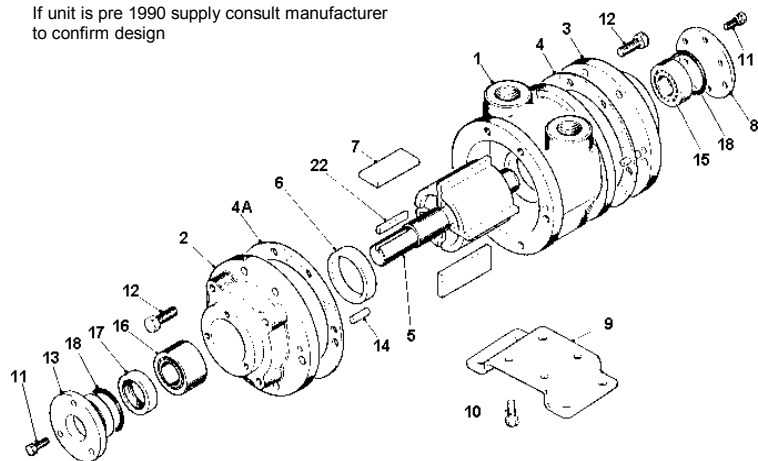
Max. Overhung Force on shaft 620 N (140 lbf.)
 Axial loads should be kept to a minimum
 Mass 11.10 kg (24.46 lb.)

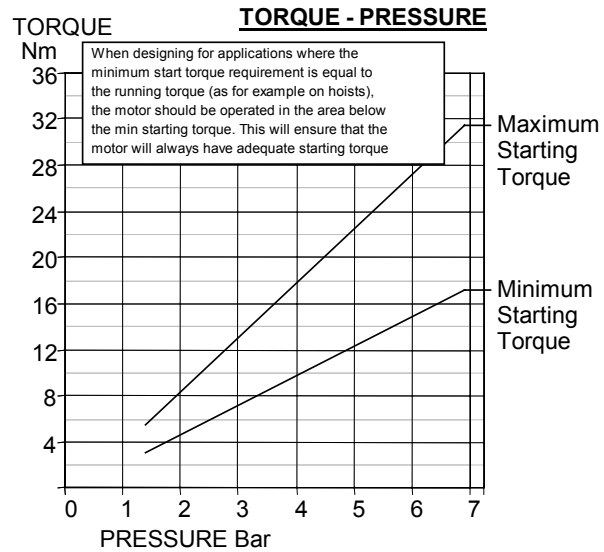
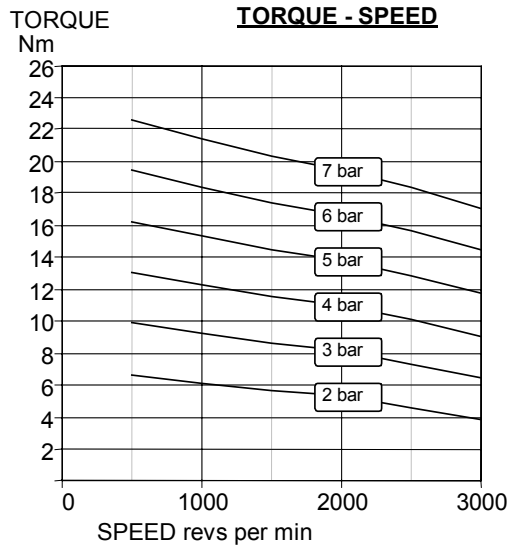
**Note: With air inlet at port 'A', shaft rotation is clockwise looking on shaft.
 For opposite rotation reverse ports.**

Exploded view with spare parts list

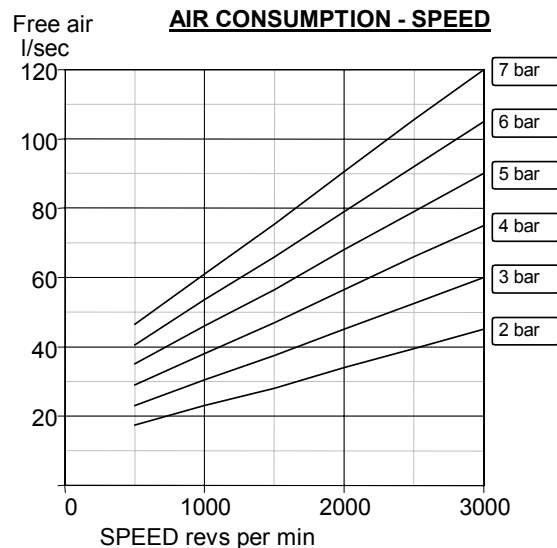
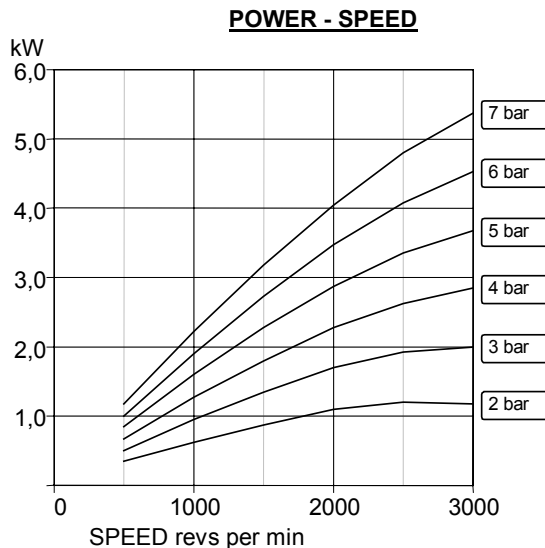
Item	Part No.	Description	Qty	Kit No.
01	780-001	Body BSP	1	
02	780-003	Front Plate	1	
03	780-002	End Plate	1	
04	-	Gasket	2	789-910
04A-1	-	Gasket	1	789-910
04A-2	-	Gasket	1	789-910
04A-3	-	Gasket	1	789-910
05	780-911	Rotor Shaft Assy	1	
06	780-006	Ejection Ring	2	
07	-	Blades	4	789-910
08	740-008	Cover Plate	1	
09	780-023	Foot	1	
10	809-026	Capscrew	4	
11	802-001	Screw	6	
12	802-032	Set Screw	12	
13	780-007	Seal Housing	1	
14	806-024	Dowel	4	
15	807-026	Bearing	1	
16	807-036	Bearing	1	
17	-	Oil Seal	1	789-910
18	-	O Ring	2	789-910
22	811-021	Key	1	
	789-910	V8 Seal Kit		
	820-026	Silencer 1" BSP	1	

If unit is pre 1990 supply consult manufacturer to confirm design





A pressure regulator should be used to control the air pressure to the motor, to limit the maximum output torque applied to the driven assembly.



Muffler supplied with motor.
Motor is reversible.

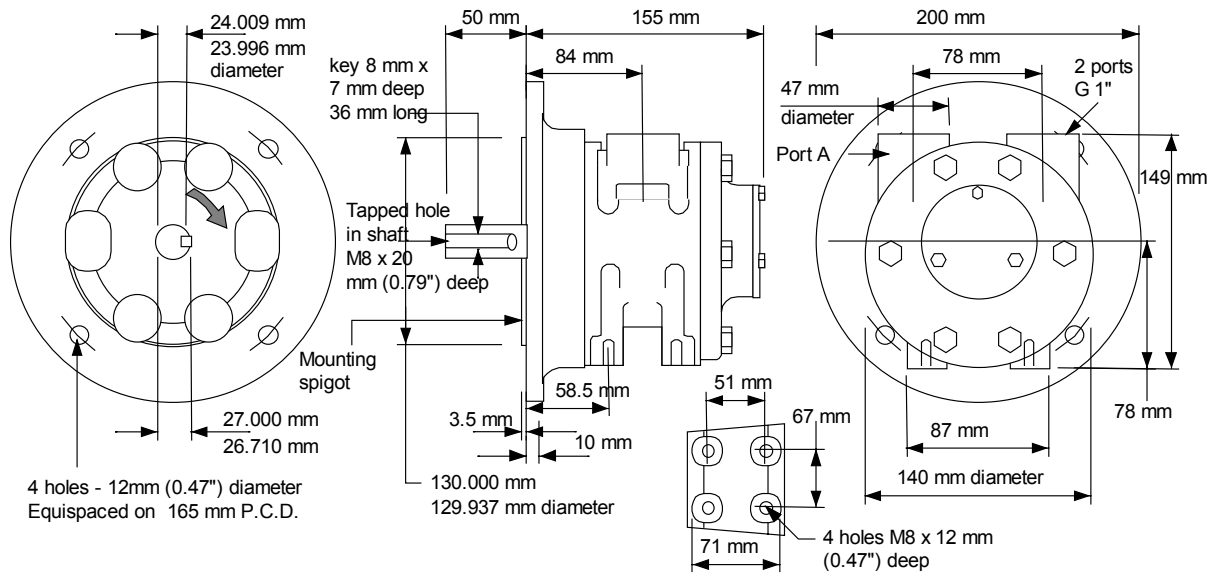
Attitude: The motor can be operated in all positions.
Maximum temperature -20°C to +80°C (-4°F to +176°F).

Max. Overhung Force on motor shaft 620 N (140 lbf.).
Axial loads should be kept to a minimum.

AIRLINE FILTRATION AND LUBRICATION

Use 64 micron filtration or better. Choose a lubricator suitable for the flow required. Prior to initial start-up, inject oil into the inlet port.
Lubricator drop rate 6-7 drops/minute continuous operation.
Lubricator drop rate 12-15 drops/minute intermittent operation.

Maximum continuous speed 3000 rpm



Attitude: The motor can be operated in all positions
 Maximum temperature -20°C to +80°C (-4°F to +176°F)
 Muffler supplied with motor

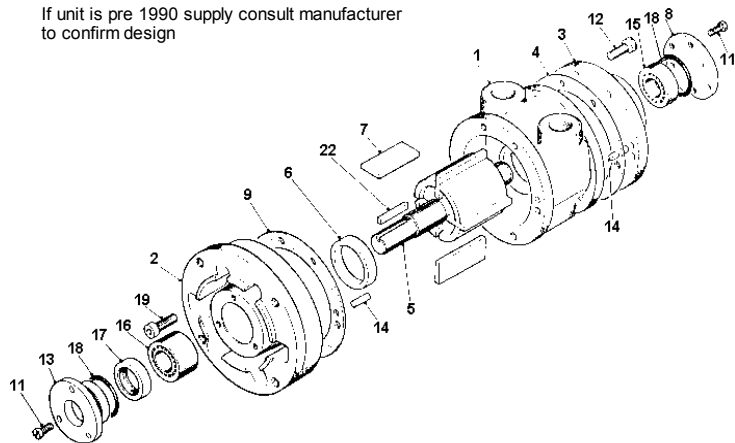
Max. Overhung Force on shaft 620 N (140 lbf.)
 Axial loads should be kept to a minimum
 Mass 12.20 kg (26.89 lb.)

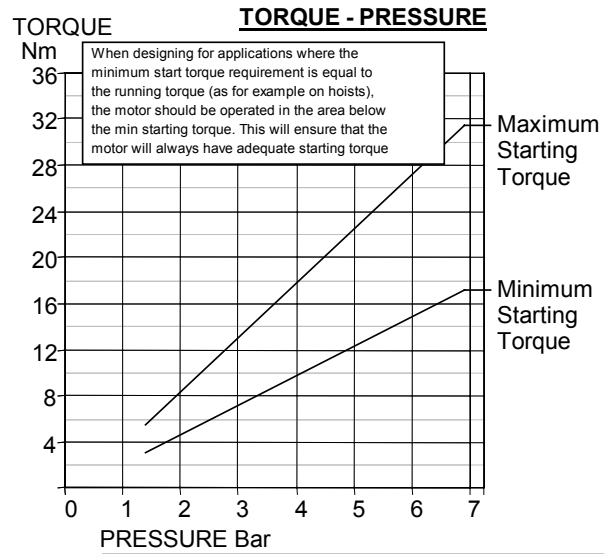
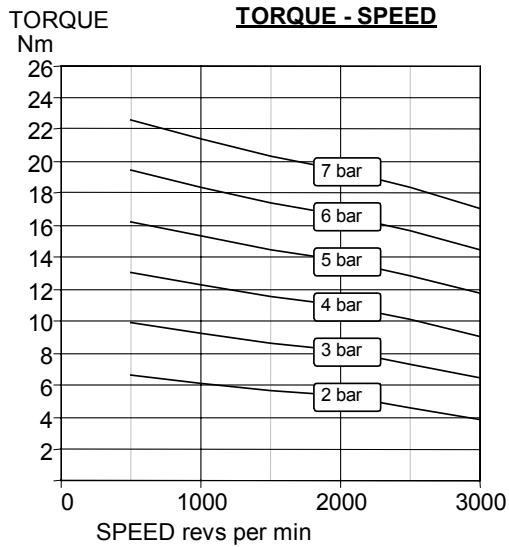
Note: With air inlet at port 'A', rotation is clockwise looking on shaft. For opposite rotation reverse ports.

Exploded view with spare parts list

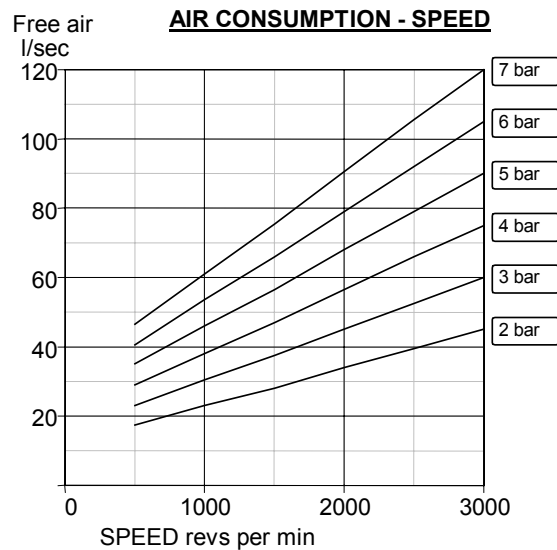
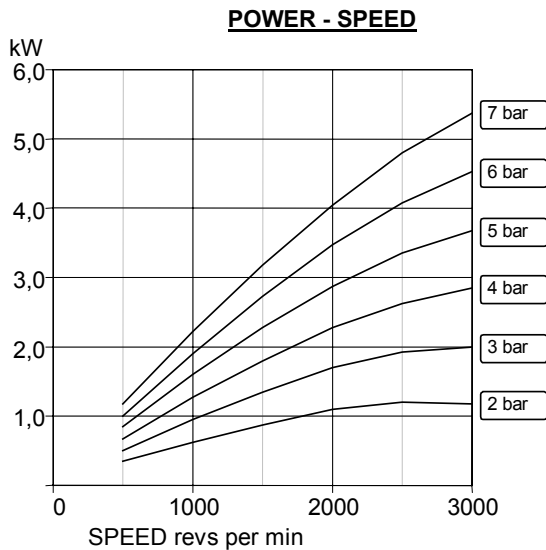
Item	Part No.	Description	Qty	Kit No.
01	780-101	Body BSP	1	
02	780-036	Front Plate D90	1	
03	780-002	End Plate	1	
04	-	Gasket	2	789-910
05	780-922	Rotor Shaft Assy	1	
06	780-006	Ejection Ring	2	
07	-	Blades	4	789-910
08	740-008	Cover Plate	1	
09-1	-	Gasket	1	789-910
09-2	-	Gasket	1	789-910
09-3	-	Gasket	1	789-910
11	802-001	Screw	6	
12	802-032	Screw	6	
13	780-007	Seal Housing	1	
14	806-024	Dowel	4	
15	807-026	Bearing	1	
16	807-036	Bearing	1	
17	-	Oil Seal	1	789-910
18	-	O Ring	2	789-910
19	809-030	Screw	6	
22	811-042	Key	1	
	789-910	V8 Seal Kit		
	820-006	Silencer 1" BSP	1	

If unit is pre 1990 supply consult manufacturer to confirm design





A pressure regulator should be used to control the air pressure to the motor, to limit the maximum output torque applied to the driven assembly.



Muffler supplied with motor.
Motor is reversible.

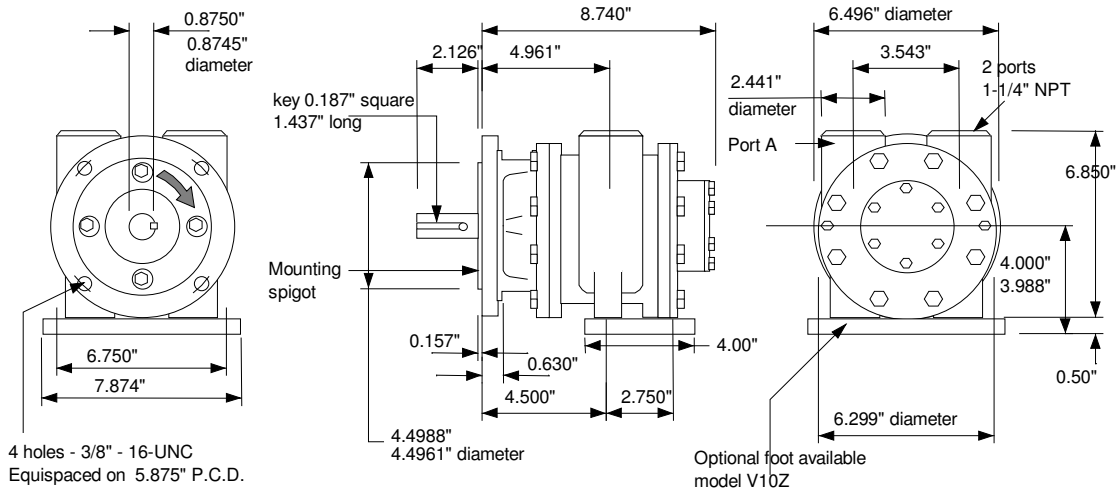
Attitude: The motor can be operated in all positions.
Maximum temperature -20°C to +80°C (-4°F to +176°F).

Max. Overhung Force on motor shaft 620 N (140 lbf.).
Axial loads should be kept to a minimum.

AIRLINE FILTRATION AND LUBRICATION

Use 64 micron filtration or better. Choose a lubricator suitable for the flow required. Prior to initial start-up, inject oil into the inlet port.
Lubricator drop rate 6-7 drops/minute continuous operation.
Lubricator drop rate 12-15 drops/minute intermittent operation.

Maximum continuous speed 3000 rpm



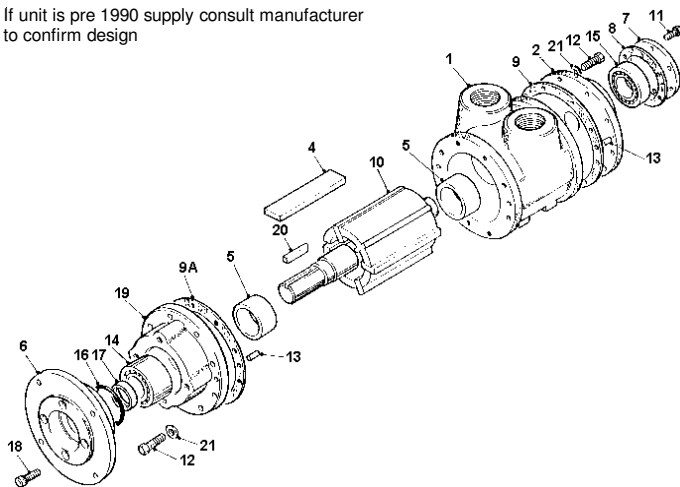
Attitude: The motor can be operated in all positions.
Maximum temperature -20°C to +80°C (-4°F to +176°F).
Muffler supplied with motor.

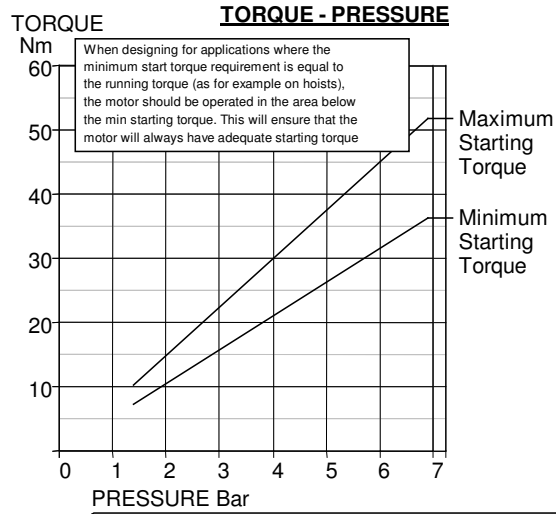
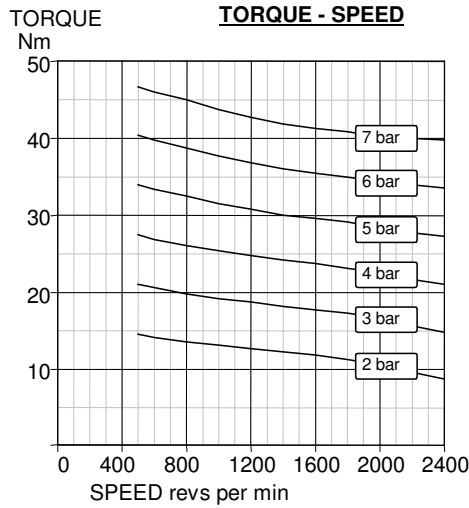
Max. Overhung Force on shaft 1750 N (400 lbf.).
Axial loads should be kept to a minimum.
Mass 24.00 kg (52.90 lb.).

**Note: With air inlet at port 'A',
rotation is clockwise looking on shaft.
For opposite rotation reverse ports.**

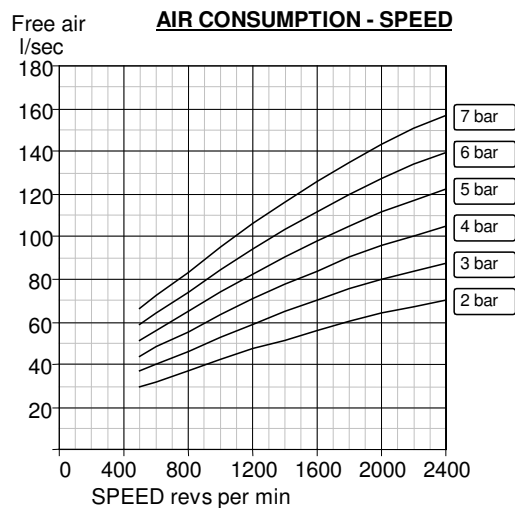
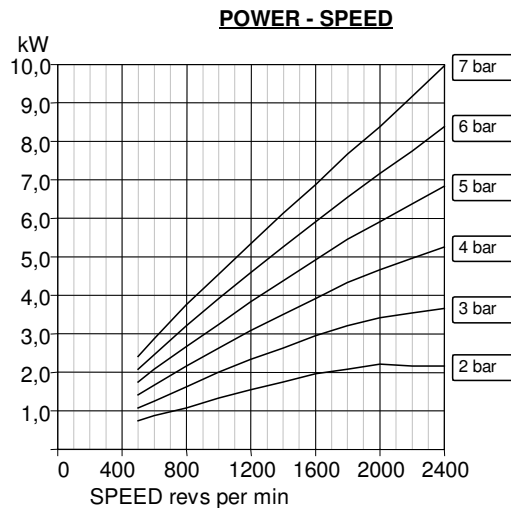
Exploded view with spare parts list

Item	Part No.	Description	Qty	Kit No.	If unit is pre 1990 supply consult manufacturer to confirm design
01	790-001	Body NPT	1		
02	790-002	End Plate	1		
04	-	Blades	6	799-910	
05	790-006	Ejection Ring	2		
06	790-018	Flange NEMA 145TC	1		
07	790-008	Cover Plate	1		
08	-	Gasket	1	799-910	
09	-	Gasket	2	799-910	
09A-1	-	Gasket	1	799-910	
09A-2	-	Gasket	1	799-910	
09A-3	-	Gasket	1	799-910	
10	790-910	Rotor & Shaft Assy	1		
11	802-007	Screw	6		
12	802-033	Screw	16		
13	806-018	Dowel	4		
14	807-019	Bearing	1		
15	807-037	Bearing	1		
16	-	O Ring	1	799-910	
17	-	Oil Seal	1	799-910	
18	809-019	Cap Screw	4		
19	790-026	Front Cover SAE	1		
20	811-020	Key	1		
21	803-019	Washer	16		
	799-910	V10 Seal Kit			
	820-027	Silencer 1-1/4" BSP	1		





A pressure regulator should be used to control the air pressure to the motor, to limit the maximum output torque applied to the driven assembly.



Muffler supplied with motor.
Motor is reversible.

Attitude: The motor can be operated in all positions.
Maximum temperature -20°C to +80°C (-4°F to +176°F).

Max. Overhung Force on motor shaft 1750 N (400 lbf.).
Axial loads should be kept to a minimum.

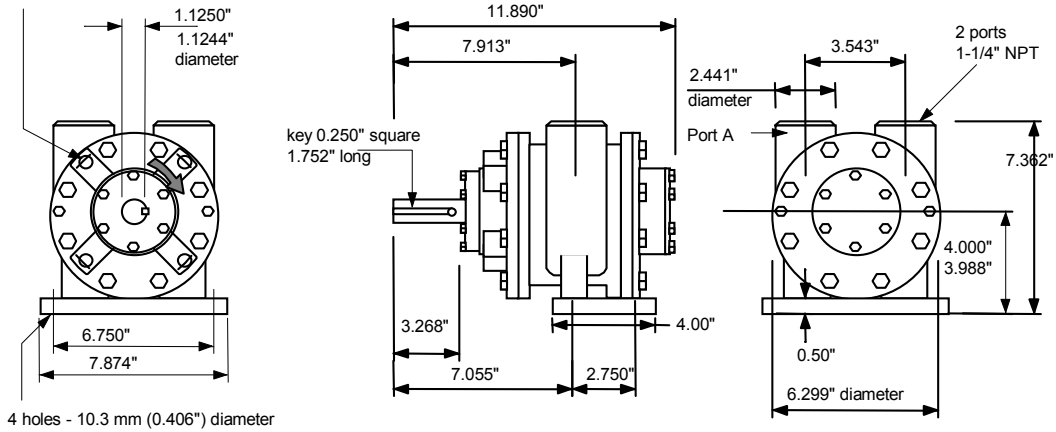
AIRLINE FILTRATION AND LUBRICATION

Use 64 micron filtration or better. Choose a lubricator suitable for the flow required. Prior to initial start-up, inject oil into the inlet port.
Lubricator drop rate 8-10 drops/minute continuous operation.
Lubricator drop rate 14-16 drops/minute intermittent operation.

Maximum continuous speed 2400 rpm

VA10J Vane Air Motor

4 holes - 7/16" - 14-UNC
x 16 mm (0.63") deep
Equispaced on 98.370 mm P.C.D.



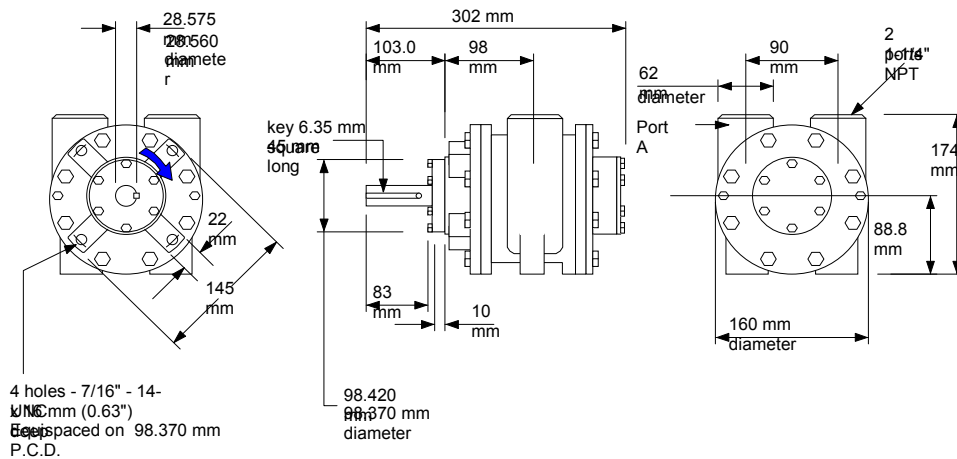
Attitude: The motor can be operated in all positions.
Maximum temperature -20°C to +80°C (-4°F to +176°F).
Muffler supplied with motor.

Max. Overhung Force on shaft 1750 N (400 lbf.).
Axial loads should be kept to a minimum.
Mass 22.00 kg (48.49 lb.).

**Note: With air inlet at port 'A',
rotation is clockwise looking on shaft.
For opposite rotation reverse ports.**

VA10X Vane Air Motor

Face mounting configuration



Attitude: The motor can be operated in all positions
Maximum temperature -20°C to +80°C (-4°F to +176°F)
Muffler supplied with motor

Max. Overhung Force on shaft 1750 N (400 lbf.)
Axial loads should be kept to a minimum
Mass 21.00 kg (46.28 lb.)

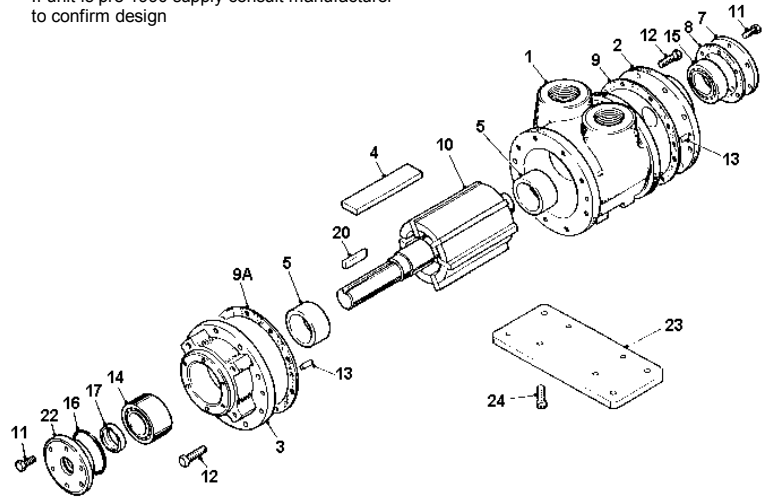
**Note: With air inlet at port 'A', shaft
rotation is clockwise looking on shaft.
For opposite rotation reverse ports.
Motor is reversible**

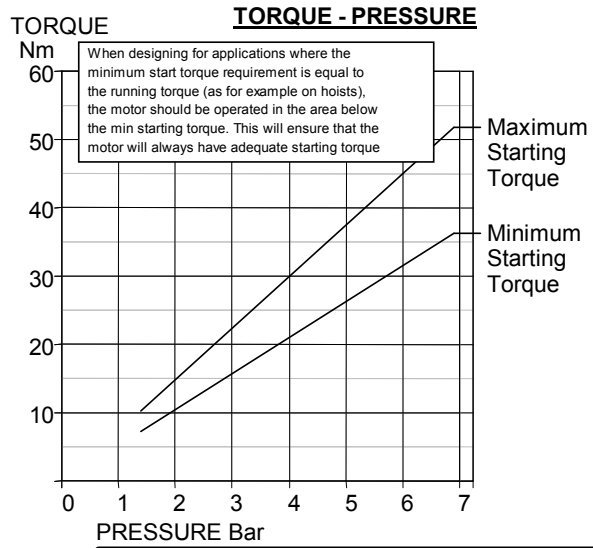
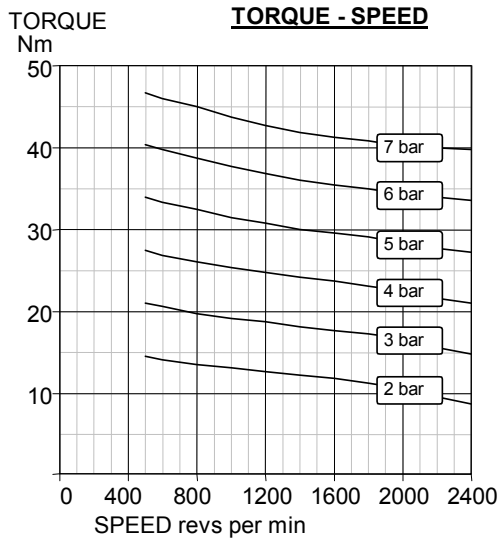


Exploded view with spare parts list

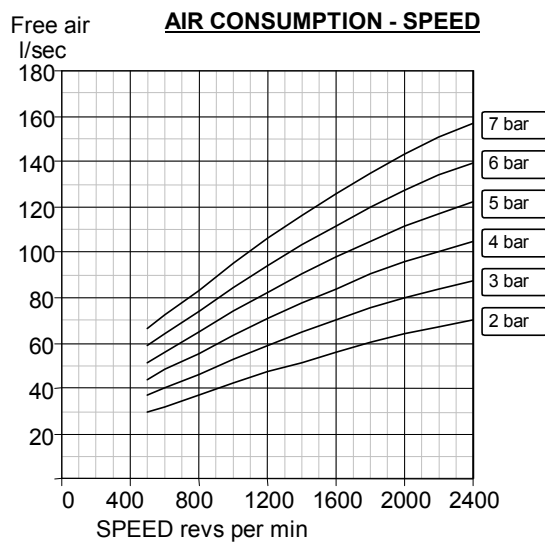
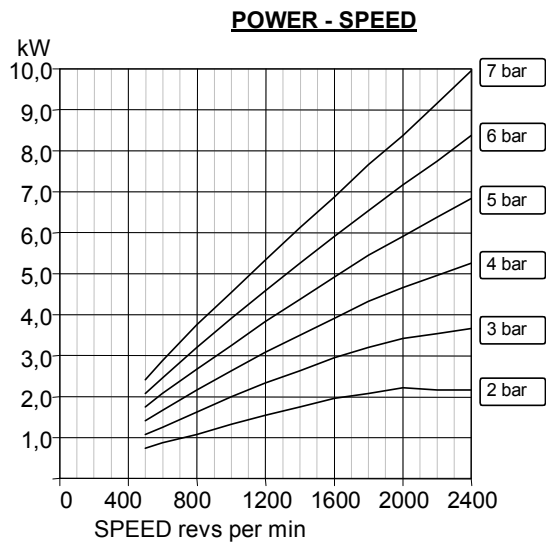
Item	Part No.	Description	Qty	Kit No.
01	790-001	Body NPT	1	
02	790-002	End Plate	1	
03	790-003	Front Plate	1	
04	-	Blades	6	799-910
05	790-006	Ejection Ring	2	
07	790-008	Cover Plate	1	
08	-	Gasket	1	799-910
09	-	Gasket	2	799-910
09A-1	-	Gasket	2	799-910
09A-2	-	Gasket	2	799-910
09A-3	-	Gasket	2	799-910
10	790-911	Rotor & Shaft Assy	1	
11	802-007	Screw	12	
12	802-033	Screw	16	
13	806-018	Dowel	4	
14	807-037	Bearing	1	
15	807-019	Bearing	1	
16	-	O Ring	1	799-910
17	-	Oil Seal	1	799-910
20	811-024	Key	1	
21	803-019	Washer	16	
22	790-007	Seal Housing	1	
23	790-015	Base Plate	1	
24	809-008	Capscrew	4	
	799-910	V10 Seal Kit		
	820-027	Silencer 1-1/4" BSP	1	

If unit is pre 1990 supply consult manufacturer to confirm design





A pressure regulator should be used to control the air pressure to the motor, to limit the maximum output torque applied to the driven assembly.



Muffler supplied with motor.
Motor is reversible.

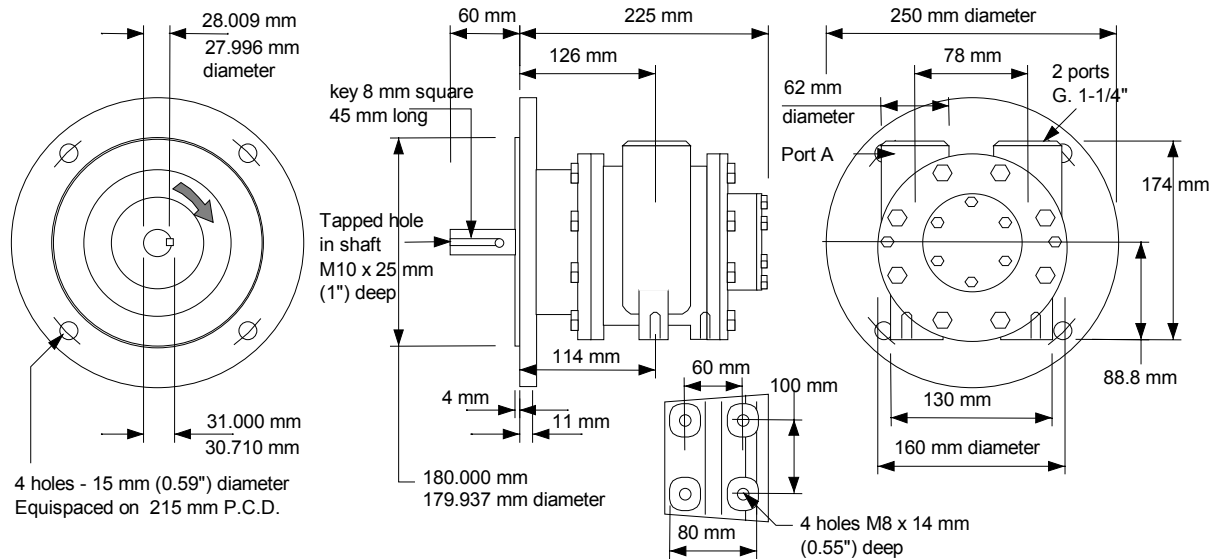
Attitude: The motor can be operated in all positions.
Maximum temperature -20°C to +80°C (-4°F to +176°F).

Max. Overhung Force on motor shaft 1750 N (400 lbf.).
Axial loads should be kept to a minimum.

AIRLINE FILTRATION AND LUBRICATION

Use 64 micron filtration or better. Choose a lubricator suitable for the flow required. Prior to initial start-up, inject oil into the inlet port.
Lubricator drop rate 8-10 drops/minute continuous operation.
Lubricator drop rate 14-16 drops/minute intermittent operation.

Maximum continuous speed 2400 rpm



Attitude: The motor can be operated in all positions.
 Maximum temperature -20°C to +80°C (-4°F to +176°F).
 Muffler supplied with motor.

Max. Overhung Force on shaft 1750 N (400 lbf.).
 Axial loads should be kept to a minimum.

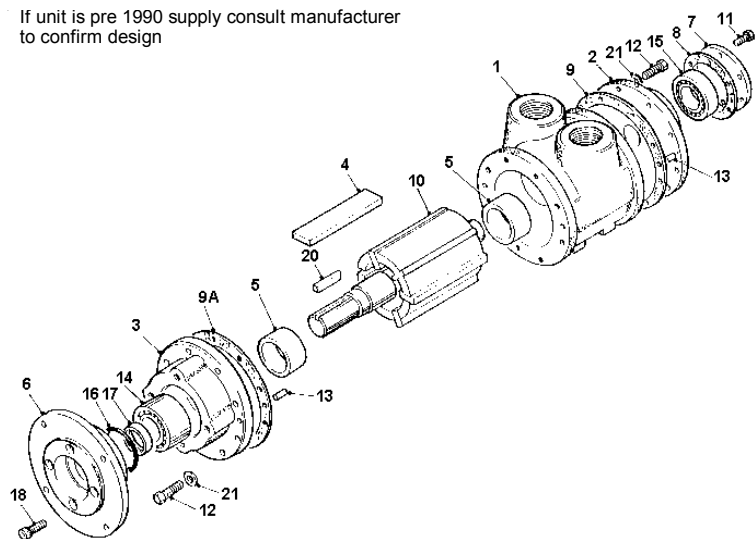
Mass 27.00 kg (59.51 lb.).

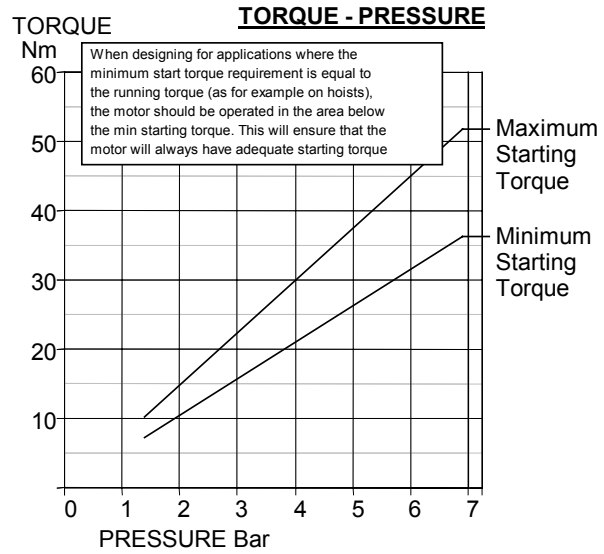
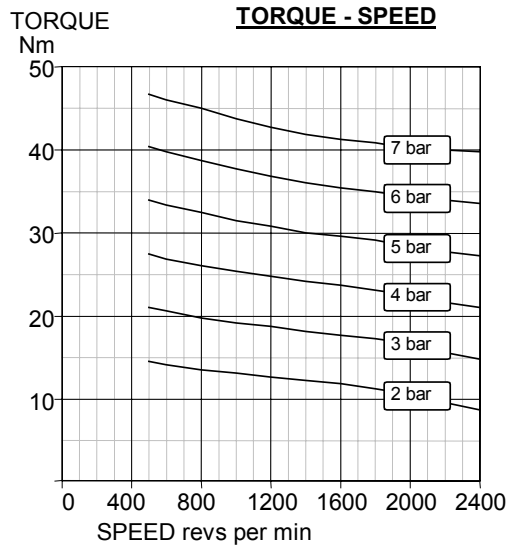
**Note: With air inlet at port 'A',
 rotation is clockwise looking on shaft.
 For opposite rotation reverse ports.**

Exploded view with spare parts list

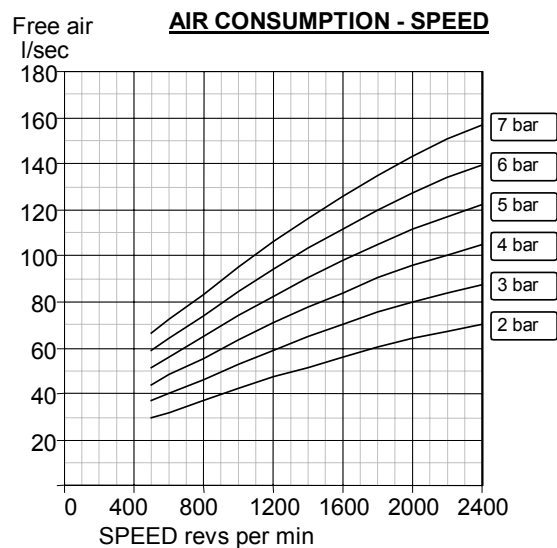
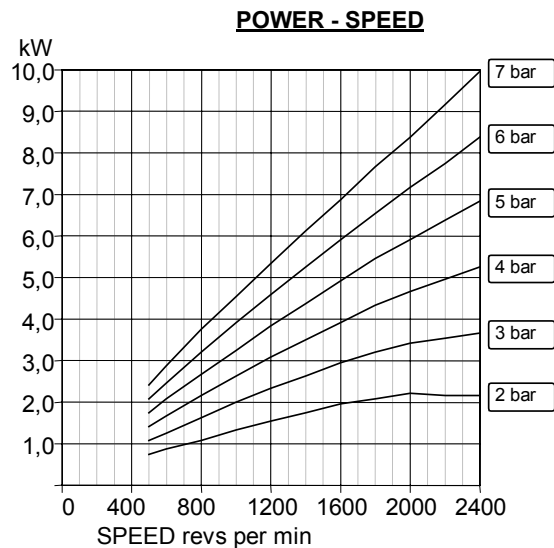
Item	Part No.	Description	Qty	Kit No.
01	790-101	Body BSP	1	
02	790-002	End Plate	1	
03	790-026	Front Cover	1	
04	-	Blades	6	799-910
05	790-006	Ejection Ring	2	
06	790-037	Flange D100	1	
07	790-008	Cover Plate	1	
08	-	Gasket	1	799-910
09	-	Gasket	2	799-910
09A-1	-	Gasket	1	799-910
09A-2	-	Gasket	1	799-910
09A-3	-	Gasket	1	799-910
10	790-923	Rotor & Shaft Assy	1	
11	802-007	Screw	6	
12	802-033	Screw	16	
13	806-018	Dowel	4	
14	807-037	Bearing	1	
15	807-019	Bearing	1	
16	-	O Ring	1	799-910
17	-	Oil Seal	1	799-910
18	809-019	Cap Screw	1	
20	811-033	Key	1	
21	803-019	Washer	1	
	799-910	V10 Seal Kit		
	820-007	Silencer 1-1/4" BSP	1	

If unit is pre 1990 supply consult manufacturer to confirm design





A pressure regulator should be used to control the air pressure to the motor, to limit the maximum output torque applied to the driven assembly.



Muffler supplied with motor.
Motor is reversible.

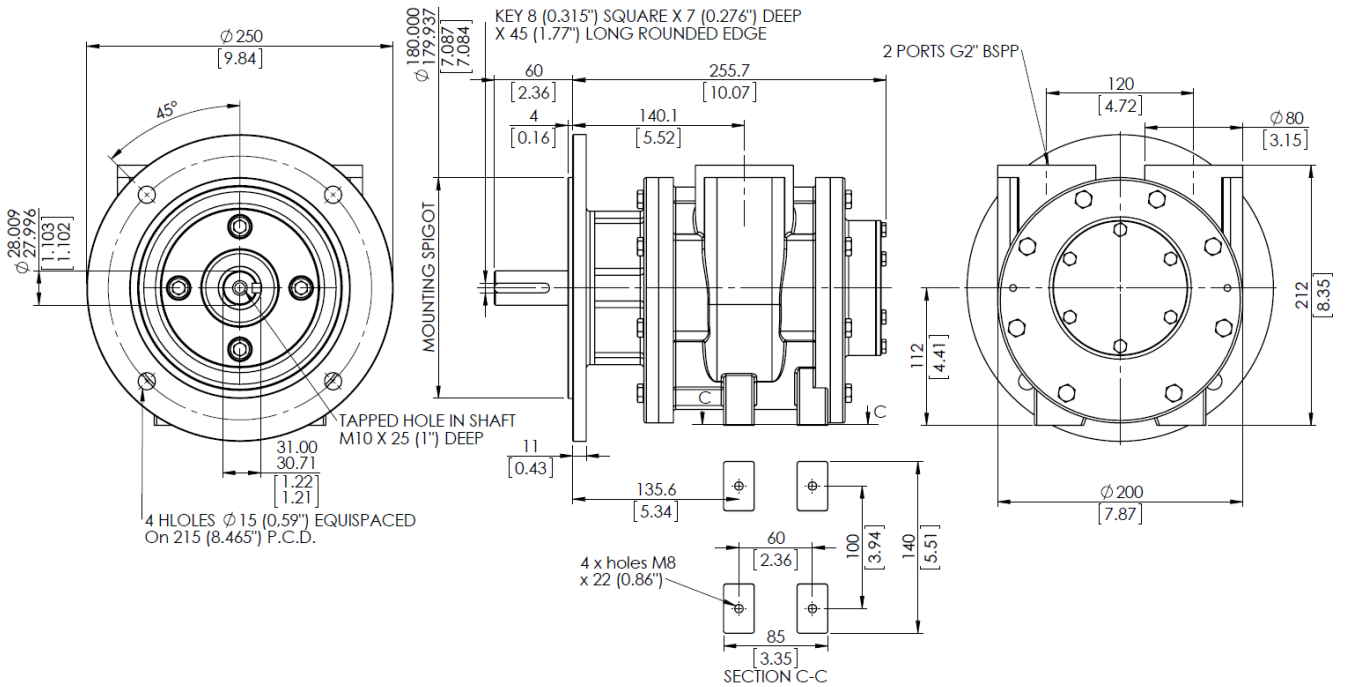
Attitude: The motor can be operated in all positions.
Maximum temperature -20°C to +80°C (-4°F to +176°F).

Max. Overhung Force on motor shaft 1750 N (400 lbf.).
Axial loads should be kept to a minimum.

AIRLINE FILTRATION AND LUBRICATION

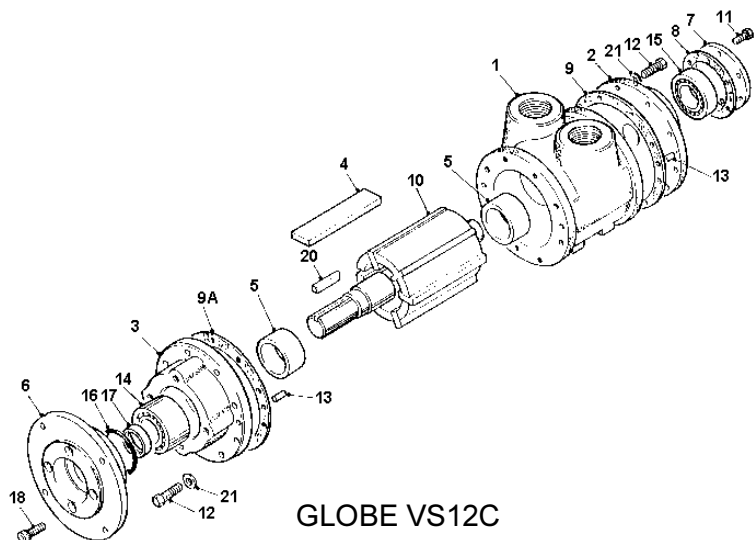
Use 64 micron filtration or better. Choose a lubricator suitable for the flow required. Prior to initial start-up, inject oil into the inlet port.
Lubricator drop rate 8-10 drops/minute continuous operation.
Lubricator drop rate 14-16 drops/minute intermittent operation.

Maximum continuous speed 2400 rpm

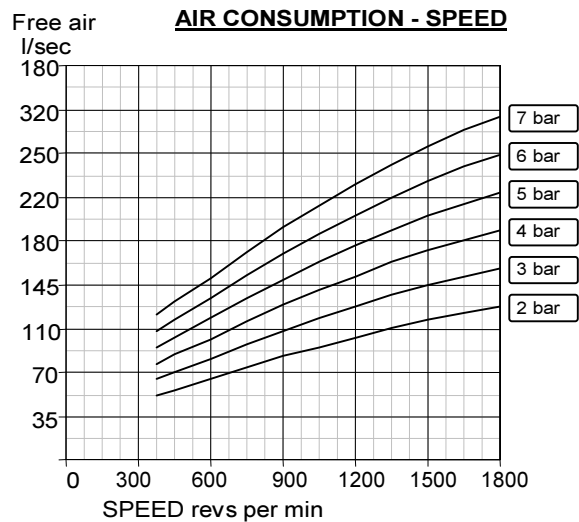
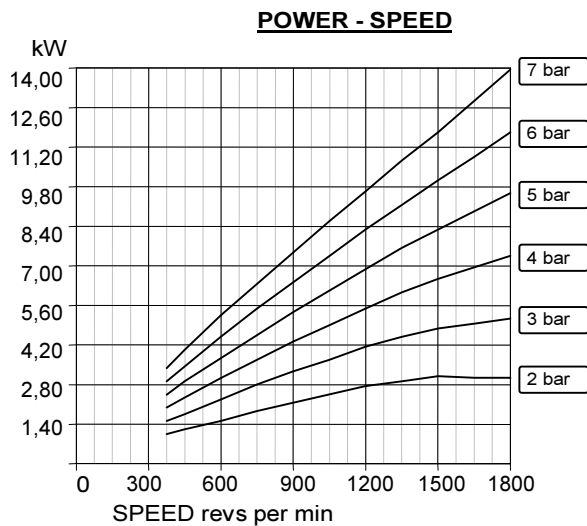
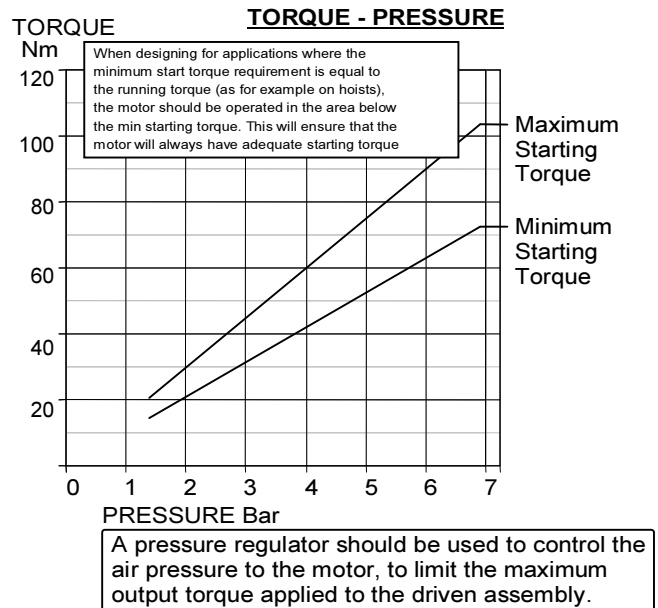
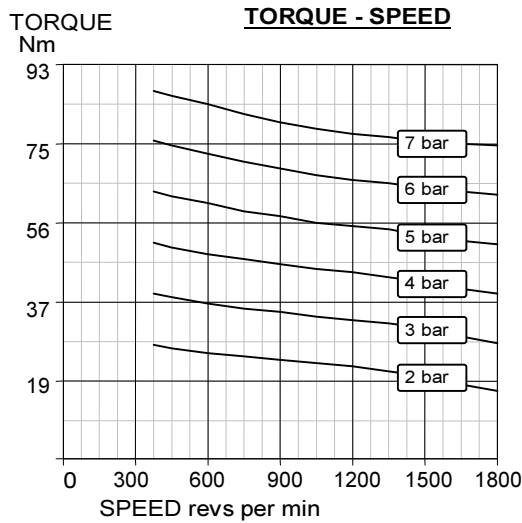


Exploded view with spare parts list

Item	Part No.	Description	Qty	Kit No.
01	712-101	Body BSP	1	
02	712-002	End Plate	1	
03	712-026	Front Cover	1	
04	-	Blades	6	712-910
05	712-006	Ejection Ring	2	
06	712-037	Flange D100	1	
07	712-008	Cover Plate	1	
08	-	Gasket	1	712-910
09	-	Gasket	2	712-910
09A-1	-	Gasket	1	712-910
09A-2	-	Gasket	1	712-910
09A-3	-	Gasket	1	712-910
10	712-923	Rotor & Shaft Assy	1	
11	-	Screw	6	
12	-	Screw	16	
13	-	Dowel	4	
14	-	Bearing	1	
15	-	Bearing	1	
16	-	O Ring	1	712-910
17	-	Oil Seal	1	712-910
18	-	Cap Screw	1	
20	-	Key	1	
21	-	Washer	1	
	712-910	V12 Seal Kit	1	
		Silencer 2" BSP	1	



GLOBE VS12C



Muffler supplied with motor.
Motor is reversible.

Attitude: The motor can be operated in all positions.
Maximum temperature -20°C to +80°C (-4°F to +176°F).

AIRLINE FILTRATION AND LUBRICATION

Use 64 micron filtration or better. Choose a lubricator suitable for the flow required. Prior to initial start-up, inject oil into the inlet port.
Lubricator drop rate 12-14 drops/minute continuous operation.
Lubricator drop rate 18-20 drops/minute intermittent operation.

Maximum continuous speed 1800 rpm