



## VANE AIR MOTORS WITH BRAKE

The GLOBE vane air motors are also available in combination with a pneumatic brake.

The GLOBE BN brakes are fail-safe brakes (spring engaged, air released). They can be used as a static brake and under certain conditions in dynamic applications.

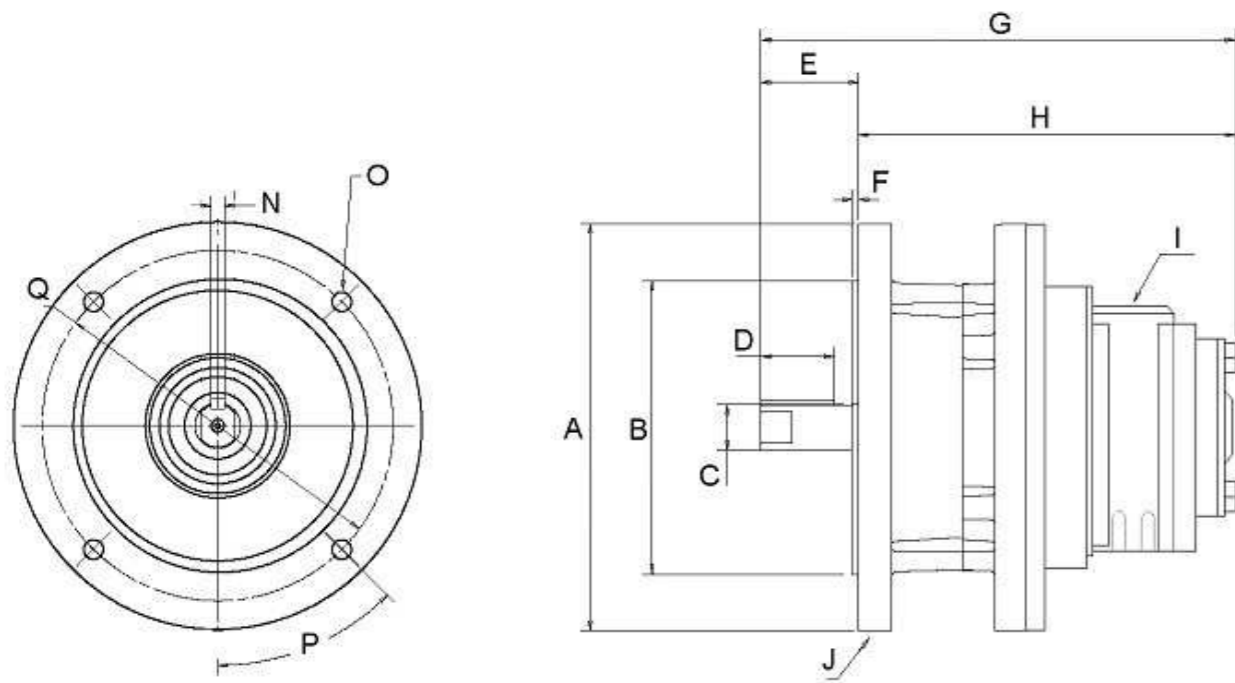
The pneumatic brake is mounted directly onto the vane air motor.

Vane air motors with brake are certified according to the European Explosive Directive ATEX II cat. 2 G&D T3 (in static applications only).

### THE ADVANTAGES OF THE VANE AIR MOTORS WITH BRAKE INCLUDE:

- Braked vane air motors can be used in hold and emergency stop
- Field serviceable;
- Easy flange connection according to IEC and NEMA standards;
- Low maintenance because very few parts are exposed to wear;
- Compact design;
- Easy interchangeable because of independent brake module;
- Cast-iron or steel housing and excellent thermal capacity for use in harsh environments;
- Long life-time;
- Certified according to the European Explosive Directive ATEX II cat. 2 G&D T3.

**GLOBE VANE MOTOR WITH BN BRAKE**



Braked air motor type	A Ø	B Ø	C Ø	D	E	F	G	H	I
<b>VS4BN71</b>	160 (6.30")	110H7 (4.33")	14H7 (0.55")	25 (0.98")	30 (1.18")	3,5 (0.14")	240 (9.45")	210 (8.27")	½ BSP
<b>VS6BN90</b>	200 (7.87")	130H7 (5.12")	24H7 (0.94")	35 (1.38")	50 (1.97")	5 (0.20")	347 (13.66")	297 (11.69")	¾ BSP
<b>VS8BN90</b>	200 (7.87")	130H7 (5.12")	24H7 (0.94")	35 (1.38")	50 (1.97")	5 (0.20")	350 (13.78")	300 (11.81")	1 BSP
<b>VS10BN100</b>	250 (9.84")	180H7 (7.09")	28H7 (1.10")	55 (2.17")	60 (2.36")	5 (0.20")	388 (15.28")	328 (12.91")	1 ¼ BSP

Braked air motor type	J	N	O Ø	P	Q Ø
<b>VS4BN71</b>	1/8BSP	5 (0.20")	10 (0.39")	45 (1.77")	130 (5.12")
<b>VS6BN90</b>	1/8BSP	8 (0.31")	10 (0.39")	45 (1.77")	165 (6.50")
<b>VS8BN90</b>	1/8BSP	8 (0.31")	10 (0.39")	45 (1.77")	165 (6.50")
<b>VS10BN100</b>	1/4BSP	8 (0.31")	12 (0.47")	45 (1.77")	215 (8.46")

		Holding Torque	Release pressure
<b>VS4BN71</b>	IEC 71 (B5)	14 Nm / 10.3 lb-ft	3,4 bar / 50 psi
<b>VS6BN90/VS8BN90</b>	IEC 90 (B5)	29 Nm / 21.4 lb-ft	3,4 bar / 50 psi
<b>VS10BN100</b>	IEC 100 (B5)	50 Nm / 36.9 lb-ft	3,4 bar / 50 psi

