

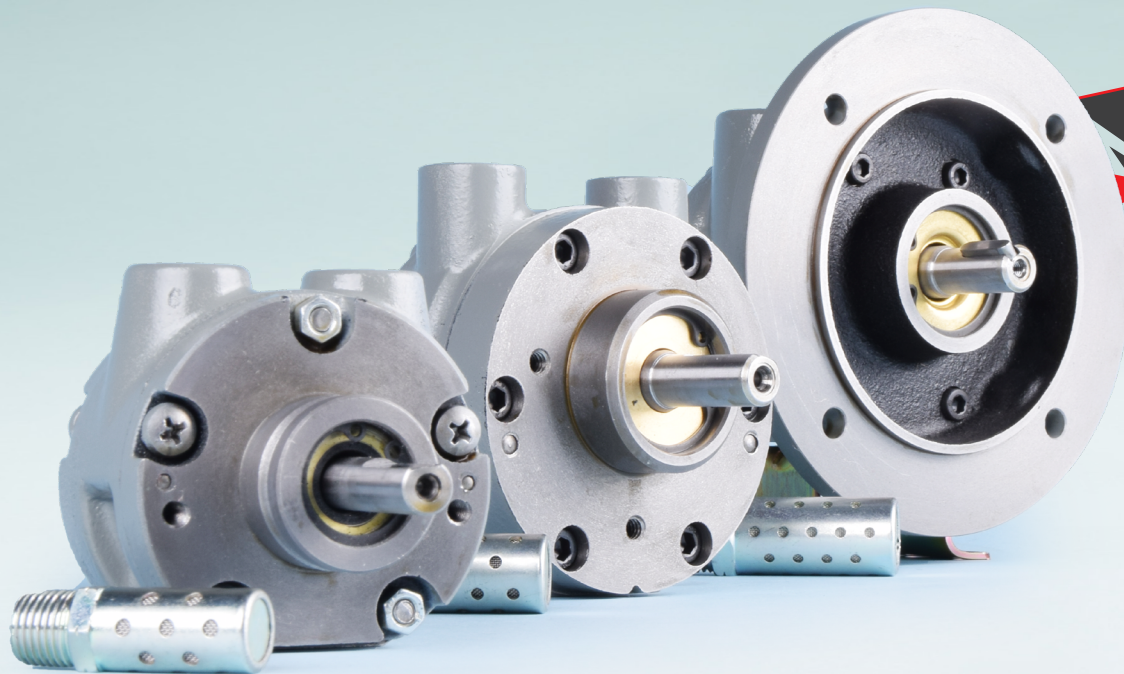


# GLOBE AIRMOTORS B.V.

GLOBE Airmotors | Boerhaaveweg 9-11 | NL - 2408 AD Alphen a/d Rijn | Tel +31 172 426 608 | [info@globe-benelux.nl](mailto:info@globe-benelux.nl)

## Specifications: VS12C-NL | VA12C-NL

Vane Air Motor Non Lubricated



Order your  
**VANE AIR MOTOR:**  
[info@globe-benelux.nl](mailto:info@globe-benelux.nl)

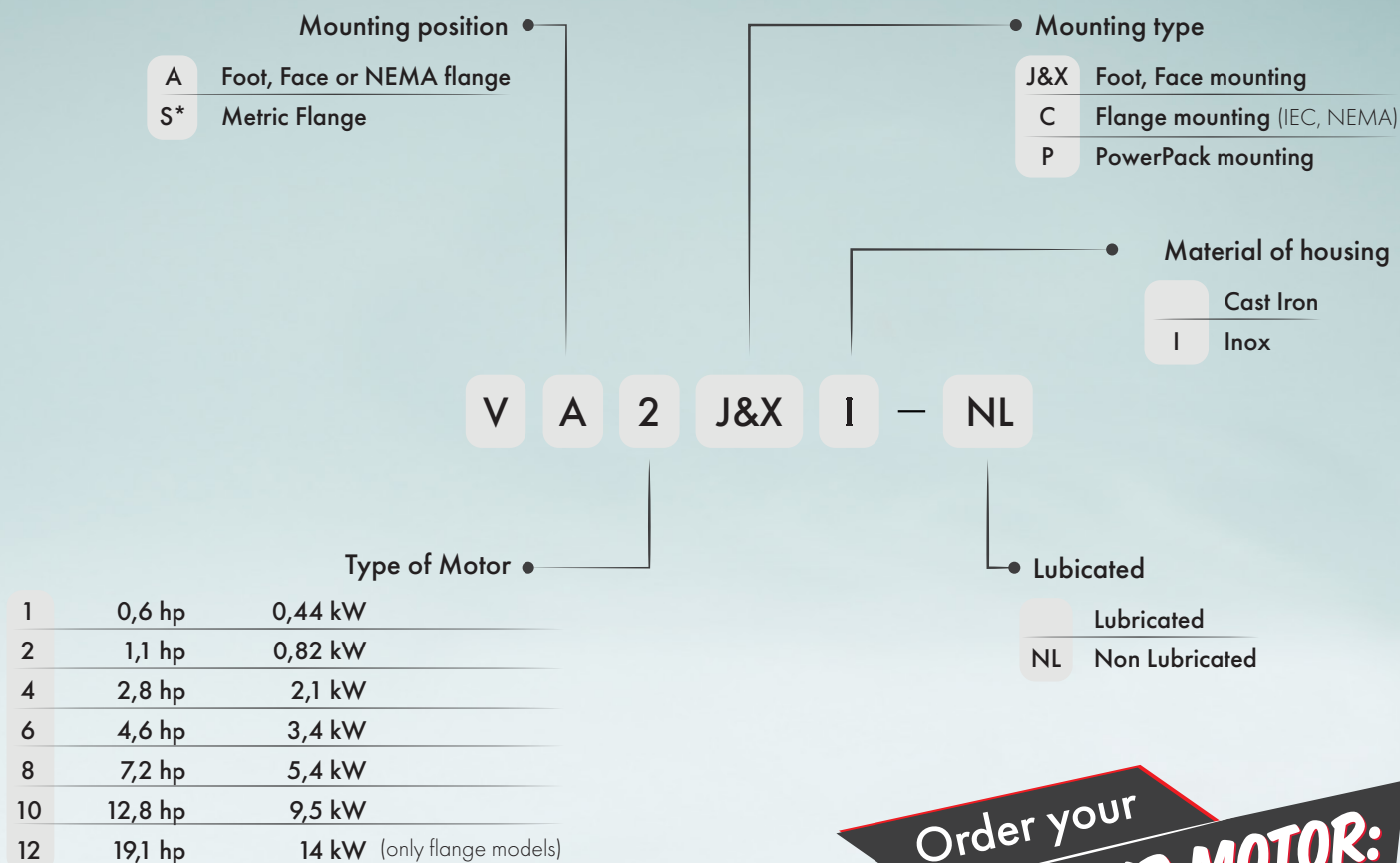
### Contents

Performance	3
Main dimensions VA12C-NL	3
Main dimensions VS12C-NL	4
Accessories for the V12-NL	5




CE UK CA Ex II 2G Ex h IIC T4 Gb  
II 2D Ex h IIC T135°C Db  
Ta = - 20° + 60°C

[globe-airmotors.com](http://globe-airmotors.com)

## Ordering Code

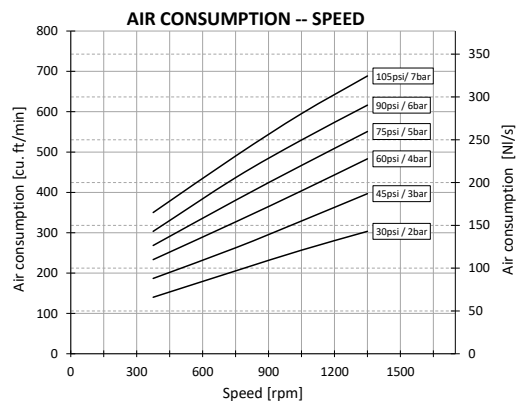


All our Vane Air Motors are delivered with the ATEX Certificate:




**II 2G Ex h IIC T4 Gb**  
**II 2D Ex h IIIC T135°C Db**  
 -20° ≤ Ta ≤ +60°C

\* The VS types are only available with mouting type C (for example VS8C).

Order your  
**VANE AIR MOTOR:**  
[orders@globe-benelux.nl](mailto:orders@globe-benelux.nl)

**VA12C-NL**

712-915

712-915

712-915

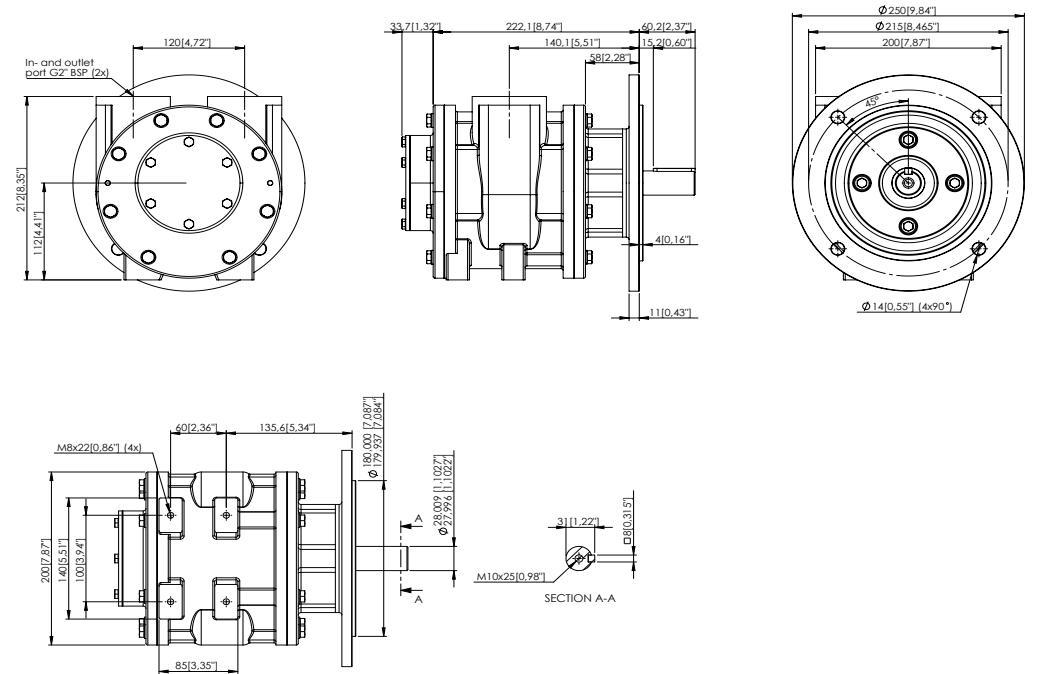
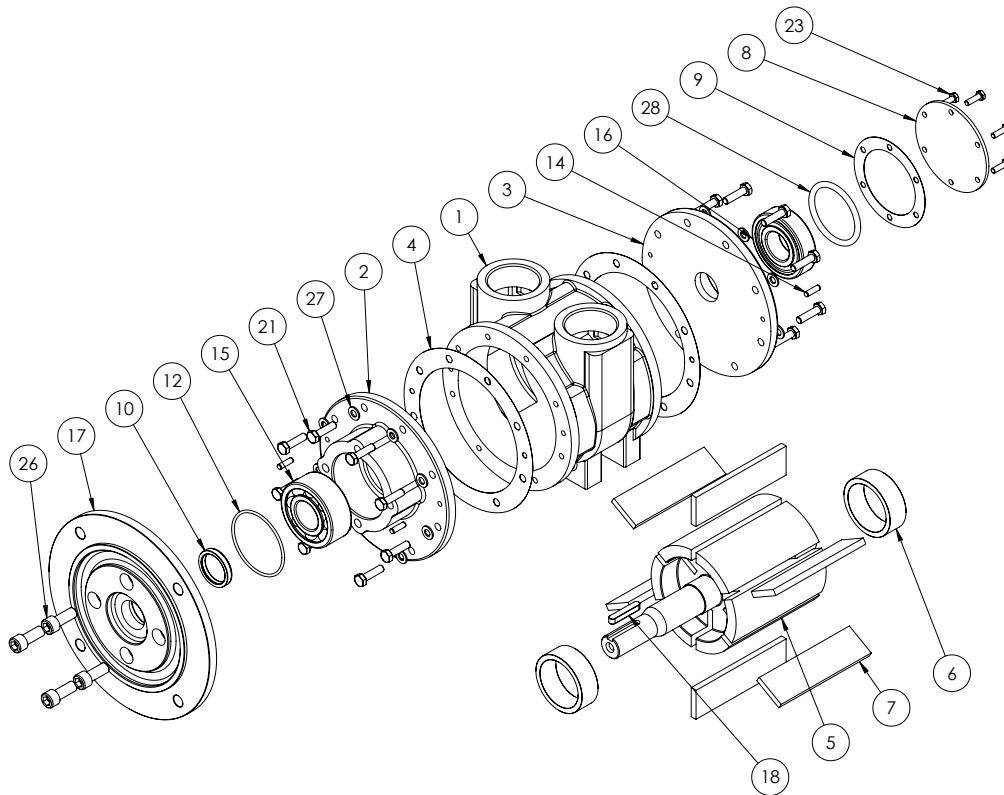
712-915

This exploded view diagram illustrates the assembly of a mechanical component, likely a pump or valve. The parts are numbered 1 through 28. The assembly consists of a central body (1) with two large circular flanges (2 and 3) on opposite sides. Flange 2 has a central hub (4) and a smaller flange (5). Flange 3 has a central hub (6) and a smaller flange (7). The central body (1) is secured by a bolt (8) and a nut (9). A cover plate (10) is attached to the side of the central body (1) with bolts (11 and 12). A gasket (13) is placed between the cover plate (10) and the central body (1). A seal ring (14) is located on the inner surface of the cover plate (10). A seal ring (15) is located on the inner surface of the central body (1). A seal ring (16) is located on the inner surface of the central body (1). A seal ring (17) is located on the inner surface of the central body (1). A seal ring (18) is located on the inner surface of the central body (1). A seal ring (19) is located on the inner surface of the central body (1). A seal ring (20) is located on the inner surface of the central body (1). A seal ring (21) is located on the inner surface of the central body (1). A seal ring (22) is located on the inner surface of the central body (1). A seal ring (23) is located on the inner surface of the central body (1). A seal ring (24) is located on the inner surface of the central body (1). A seal ring (25) is located on the inner surface of the central body (1). A seal ring (26) is located on the inner surface of the central body (1). A seal ring (27) is located on the inner surface of the central body (1). A seal ring (28) is located on the inner surface of the central body (1).

# VS12C-NL

Note: With air inlet at port 'A', rotation is clockwise looking on shaft.

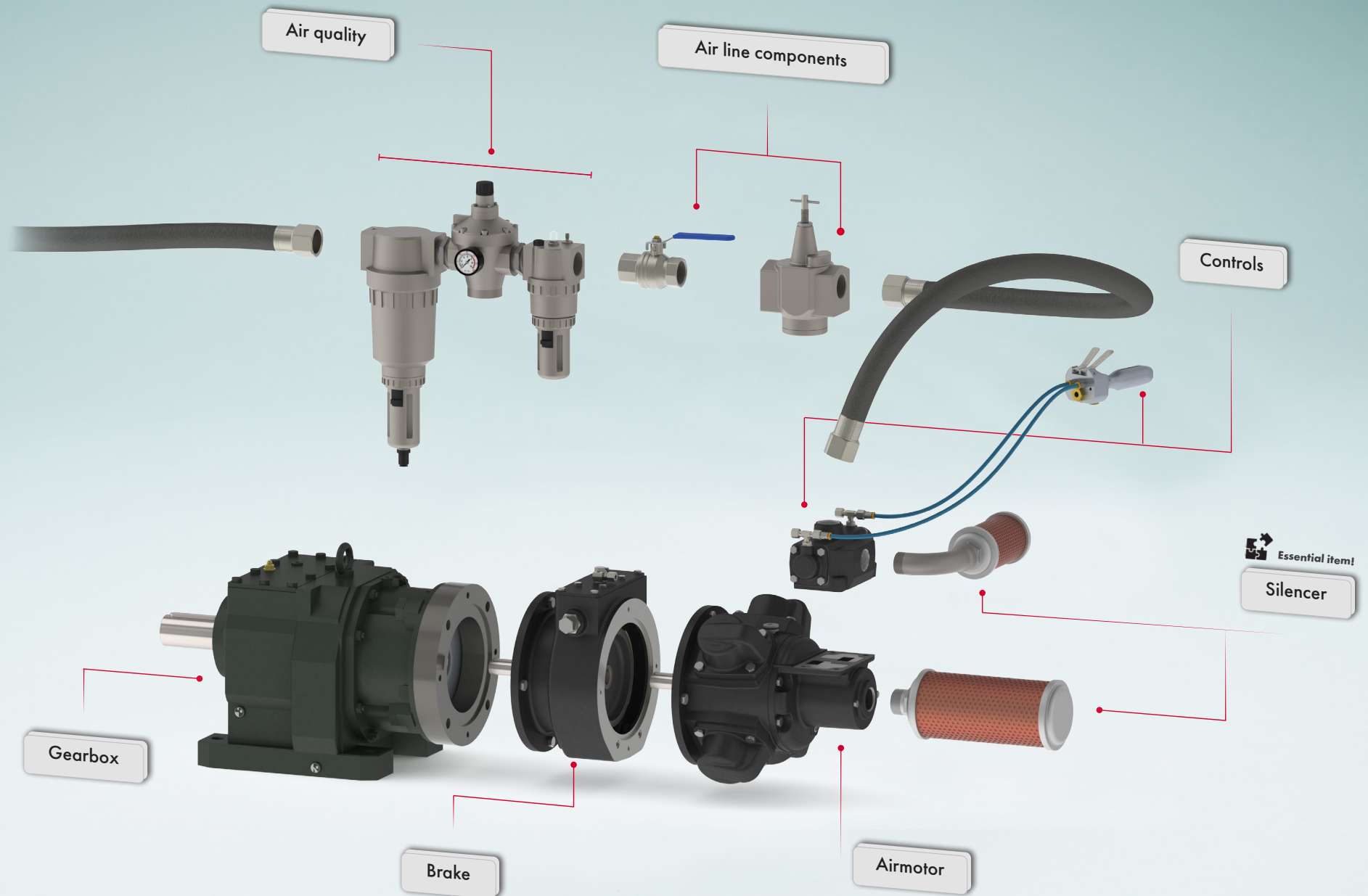
For opposite rotation, reverse ports.



- » Maximum temperature -20°C to +60°C  
(-4°F to +140°F)
- » Silencer supplied with motor
- » Max. Overhung Force on shaft 400 N (90 lbf.)
- » Axial loads should be kept to a minimum

Item	Part No.	Description	Qty	Kit No.
1	712-101	Body BSP	1	
2	712-026	Front plate	1	
3	712-002	Back plate	1	
4	-	Gasket	1	712-915
5	712-923	Rotor	1	
6	712-006	Ejection ring	2	
7	-	Rotor blade	6	712-915
8	712-008	Cover plate	1	
9	-	Gasket	1	712-915
10	808-063	Shaft seal	1	712-915
12	-	O-ring	1	712-915
14	806-018	Dowel pin	4	
15	807-039	Bearing	1	
16	807-029	Bearing	1	
17	712-036	Flange	1	
18	811-033	Key	1	
21	802-034	Screw	16	
23	802-011	Screw	6	
26	809-019	Screw	4	
27	803-019	Washer	16	
28	-	O-ring	1	712-915
712-910		V12 Seal Kit		

## Accessories for the GLOBE Air Motor



For specifications, see next page.

## Accessories for the GLOBE V12 Vane Air Motor

Complete your V12 Vane Air Motor with many different accessories. Order your GLOBE air motor with the desired options, and have it delivered to you completely assembled. In addition, you are assured of GLOBE quality for your air motor and assembly.



For  
VA12C VS12C

Many of our accessories, including the brakes, are ATEX certified. With the GLOBE air motors & accessories you can always work safely in explosion-prone areas. See below which options we offer for your air motor.

### Controls

We offer many different control valves for our air motors. For example we supply proportional control valves which are mounted directly onto the air motor. They allow you to not only change the direction of the motor, but also the speed of the motor. Besides the proportional control valves we also offer standard control valves suitable for our air motors.

The following control valves are available for the  
GLOBE V12 Vane Air Motor:

#### Hand Controlled

ART. NR  
523-900

#### Remote Controlled

ART. NR  
521-900



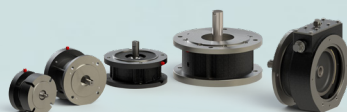
### Brakes

The combination of motor with brake is widely used for winches, cranes and positioning devices. The ATEX approved brakes within the GLOBE program have a very compact built and are very robust. All brakes are built from cast iron or steel housings and are easy to install on our air motors and gearboxes.

#### BN300

Holding Torque	14 Nm / 13,3 lbs ft.
Release pressure	3,4 bar / 50 PSI
Flange type	71 B5
Mounting options	IEC, NEMA

ART. NR  
A414BN300



### Service Kits

Regular maintenance is important to ensure a long service life of your vane air motor. Our service kits are specifically designed for your vane air motor. One servicekit contains everything you need for a service maintenance. We recommend to always have at least one service kit available in case of unexpected maintenance.

ART. NR  
712-950



### Gearbox

The GLOBE vane air motors are available with worm, coaxial and planetary gearboxes. The gearboxes are mounted directly onto the vane motors. This design makes them compact and well protected from external influences. The gearboxes are compatible with all our vane airmotors, available in stainless steel and with ATEX-Certification.

The following gearboxes are available for  
the GLOBE V12 Vane Air Motor:

#### Worm

#### Planetary

#### Coaxial

#### PFG



### Air quality & Air line components

FRL systems combine a shut off valve, filter, regulator and a lubricator in a ready to use set. It provides you with clean air and an efficient system that will extend the service life of air-powered tools and equipment. By using a speed control valve, you can set your air motor to a desired RPM without reducing its torque. It allows large airflows to pass while minimizing pressure loss at the same time.

#### 1 1/2" FRL Unit

Port size	1 1/2 inch
Max. operating pressure	10 bar / 145 PSI
Housing material	Aluminium
Weight	1.41 KG / 3.11 lb

#### Speed regulator

Port size	1 1/2 - 2inch
Port thread	NPT / BSP



Essential item!

### 2" Silencer

An air motor may produce noise that can be harmful to surrounding workers and/or cause noise problems in the application. The GLOBE Pneumatic air silencers are a simple and cost-effective solution to reduce noise levels and unwanted discharge of contaminants.

A GLOBE Silencer is required for optimal reach of maximum power. Choosing a GLOBE Silencer over other brands can prevent loss of power or motor malfunctions. The GLOBE silencers are designed specifically for our motors.

ART. NR  
A31820010

