

Mounting Accessories

for gas springs and hydraulic dampers
made of stainless steel

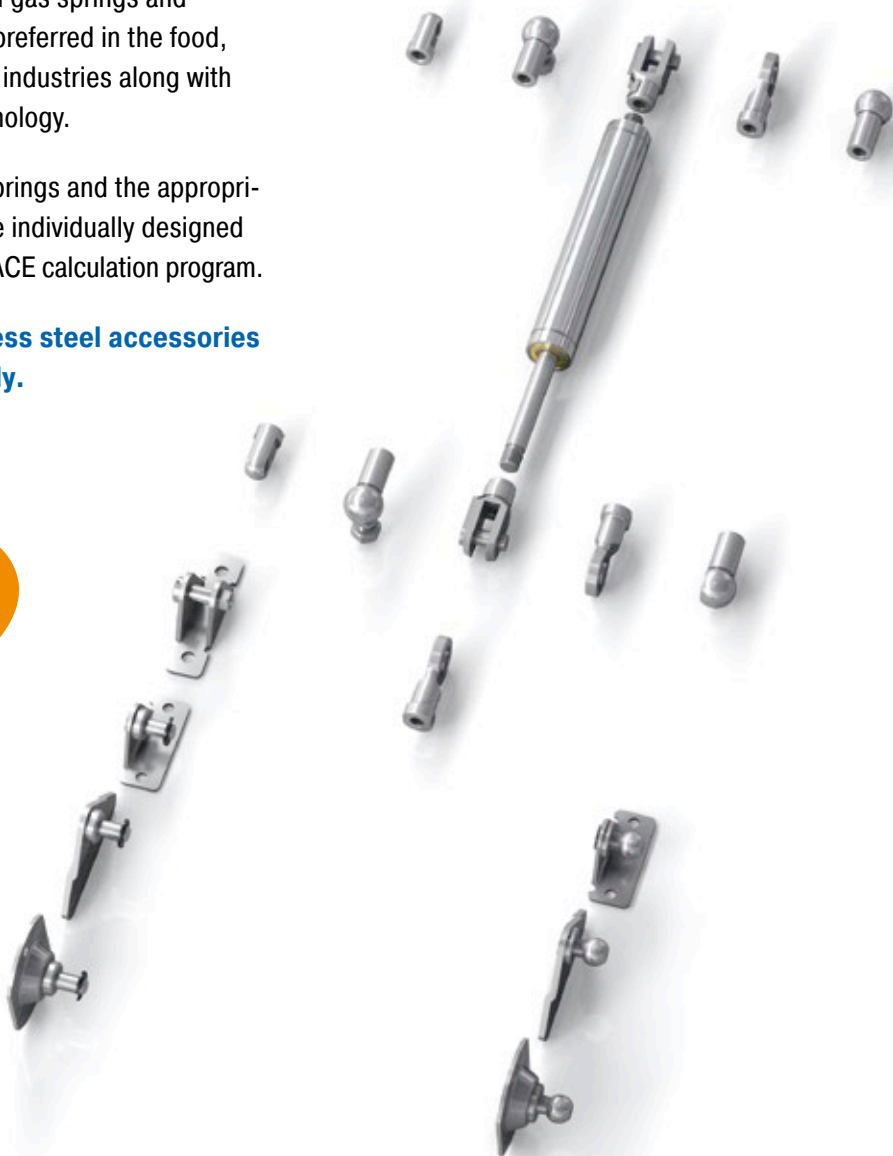
For our gas springs and hydraulic dampers made of stainless steel we also offer a flexible product range of DIN standardised end fittings and mounting brackets. These eyes, swivel eyes, clevis forks, angle ball joints, ball sockets, inline ball joints and mounting brackets are also made of sturdy stainless steel and can be flexibly combined.

The high-quality stainless steel accessories are rustproof and weakly magnetic. Just as with the corresponding stainless steel gas springs and hydraulic dampers, they are preferred in the food, electronics and ship building industries along with medical and cleanroom technology.

All ACE stainless steel gas springs and the appropriate mounting accessories are individually designed for each application with the ACE calculation program.

The entire range of stainless steel accessories is also available separately.

**Individual
Combinations!**

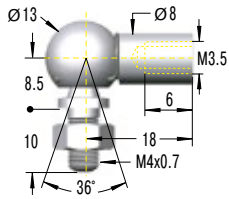


M3.5x0.6

(for GS-8-V4A, GS-10-V4A, GS-12-V4A, GZ-15-V4A)

C3,5-V4A

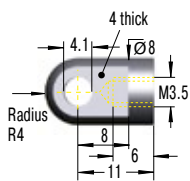
Angle Ball Joint



¹ max. force 370 N

A3,5-V4A

Eye

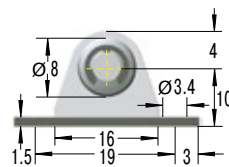


¹ max. force 370 N

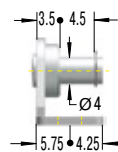


NA3,5-V4A

Angle Bracket with Ball

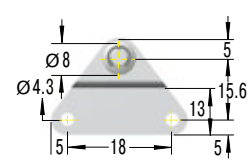


¹ max. force 180 N

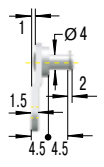


OA3,5-V4A

Side Bracket with Ball

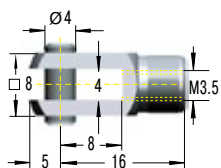


¹ max. force 180 N



D3,5-V4A

Clevis Fork

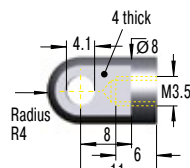


¹ max. force 370 N



A3,5-V4A

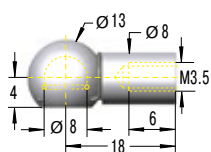
Eye



¹ max. force 370 N

G3,5-V4A

Ball Socket

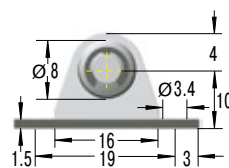


¹ max. force 370 N



NG3,5-V4A

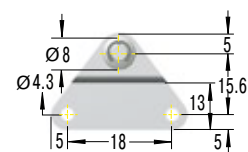
Angle Bracket with Ball



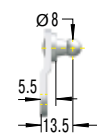
¹ max. force 180 N

OG3,5-V4A

Side Bracket with Ball



¹ max. force 180 N

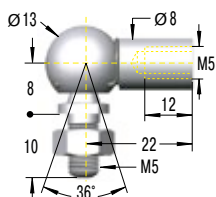


¹ Attention! Max. static load in Newtons. Beware force increase during compression (progression) and observe max. force limit.

Overview

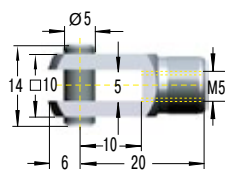
M5x0.8 (for GS-15-VA)

C5-VA
Angle Ball Joint



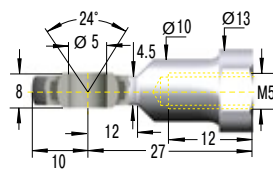
¹ max. force 430 N

D5-VA
Clevis Fork



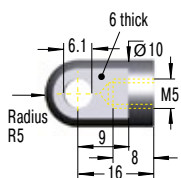
¹ max. force 490 N

E5-VA
Swivel Eye



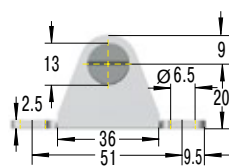
¹ max. force 490 N

A5-VA
Eye



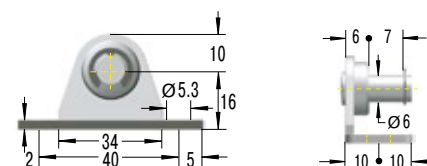
¹ max. force 490 N

MA5-V4A
Bearing Shoe



¹ max. force 500 N

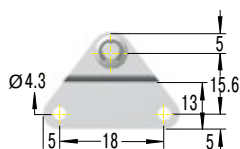
NA5-V4A
Angle Bracket with Ball



¹ max. force 400 N

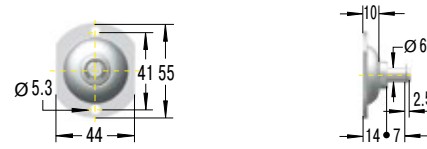


OA5-V4A
Side Bracket with Ball



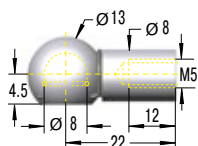
¹ max. force 180 N

PA5-V4A
Round Bracket with Ball



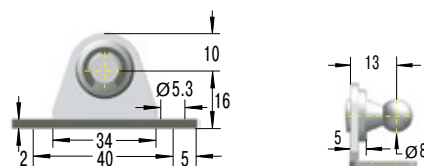
¹ max. force 500 N

G5-VA
Ball Socket



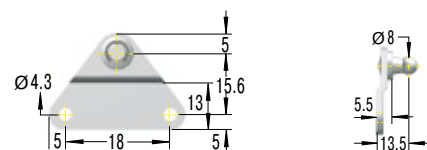
¹ max. force 430 N

NG5-V4A
Angle Bracket with Ball



¹ max. force 400 N

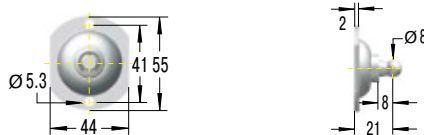
OG5-V4A
Side Bracket with Ball



¹ max. force 180 N



PG5-V4A
Round Bracket with Ball



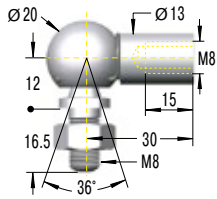
¹ max. force 500 N

¹Attention! Max. static load in Newtons. Beware force increase during compression (progression) and observe max. force limit.

M8x1.25

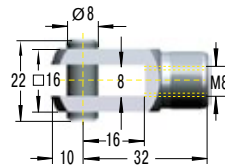
(for GS-19-VA, GS-22-VA, GZ-19-VA)

C8-VA Angle Ball Joint



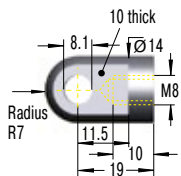
¹ max. force 1,140 N

D8-VA Clevis Fork



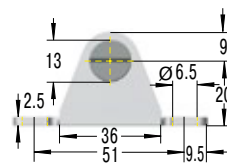
¹ max. force 1,560 N

A8-VA Eye

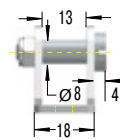


¹ max. force 1,560 N

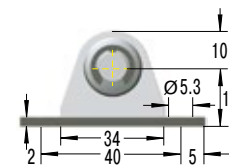
MA8-V4A Bearing Shoe



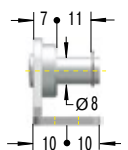
¹ max. force 1,800 N



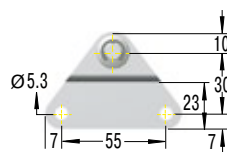
NA8-V4A Angle Bracket with Ball



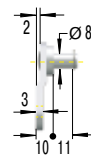
¹ max. force 1,000 N



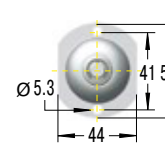
OA8-V4A Side Bracket with Ball



¹ max. force 1,200 N



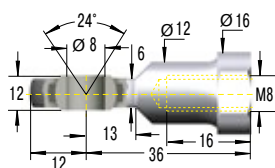
PA8-V4A Round Bracket with Ball



¹ max. force 1,200 N



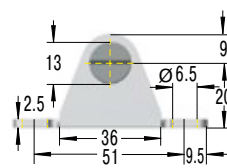
E8-VA Swivel Eye



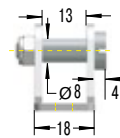
¹ max. force 1,560 N



MA8-V4A Bearing Shoe



¹ max. force 1,800 N

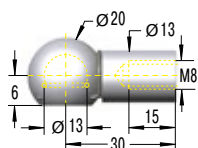


¹ Attention! Max. static load in Newtons. Beware force increase during compression (progression) and observe max. force limit.

Overview

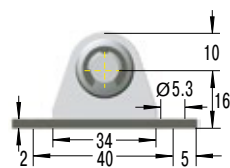
M8x1.25 (for GS-19-VA, GS-22-VA, GZ-19-VA)

G8-VA
Ball Socket



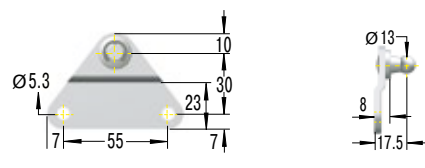
¹ max. force 1,140 N

NG8-V4A
Angle Bracket with Ball



¹ max. force 1,000 N

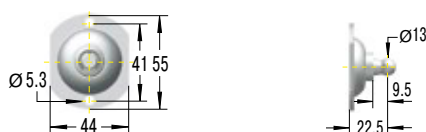
OG8-V4A
Side Bracket with Ball



¹ max. force 1,200 N



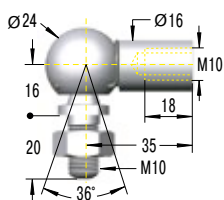
PG8-V4A
Round Bracket with Ball



¹ max. force 1,200 N

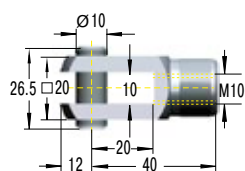
M10x1.5 (for GS-28-VA, GZ-28-VA)

C10-VA
Angle Ball Joint



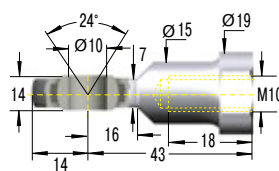
¹ max. force 1,750 N

D10-VA
Clevis Fork



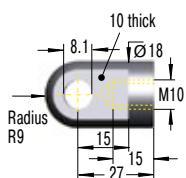
¹ max. force 3,800 N

E10-VA
Swivel Eye



¹ max. force 3,800 N

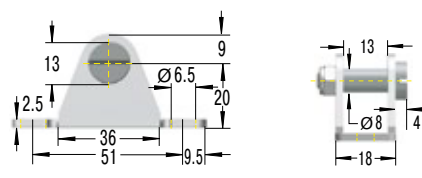
A10-VA
Eye



¹ max. force 3,800 N



MA10-V4A
Bearing Shoe

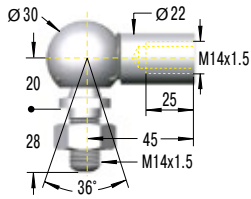


¹ max. force 1,800 N

¹ Attention! Max. static load in Newtons. Beware force increase during compression (progression) and observe max. force limit.

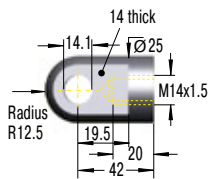
M14x1.5 (for GS-40-VA, GZ-40-VA)

C14-VA Angle Ball Joint



¹ max. force 3,200 N

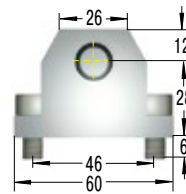
A14-VA Eye



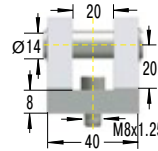
¹ max. force 7,000 N



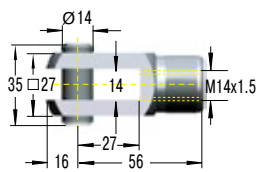
ME14-VA Bearing Shoe



¹ max. force 10,000 N



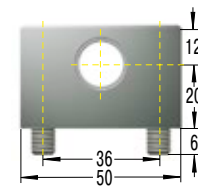
D14-VA Clevis Fork



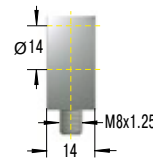
¹ max. force 7,000 N



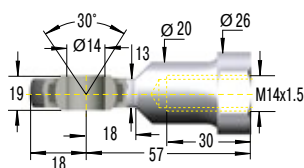
ND14-VA Mounting Flange



¹ max. force 10,000 N



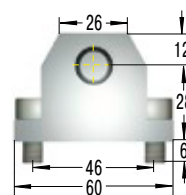
E14-VA Swivel Eye



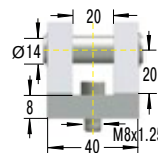
¹ max. force 7,000 N



ME14-VA Bearing Shoe



¹ max. force 10,000 N



¹ Attention! Max. static load in Newtons. Beware force increase during compression (progression) and observe max. force limit.