

Mounting Accessories

for gas springs and hydraulic dampers
made of steel

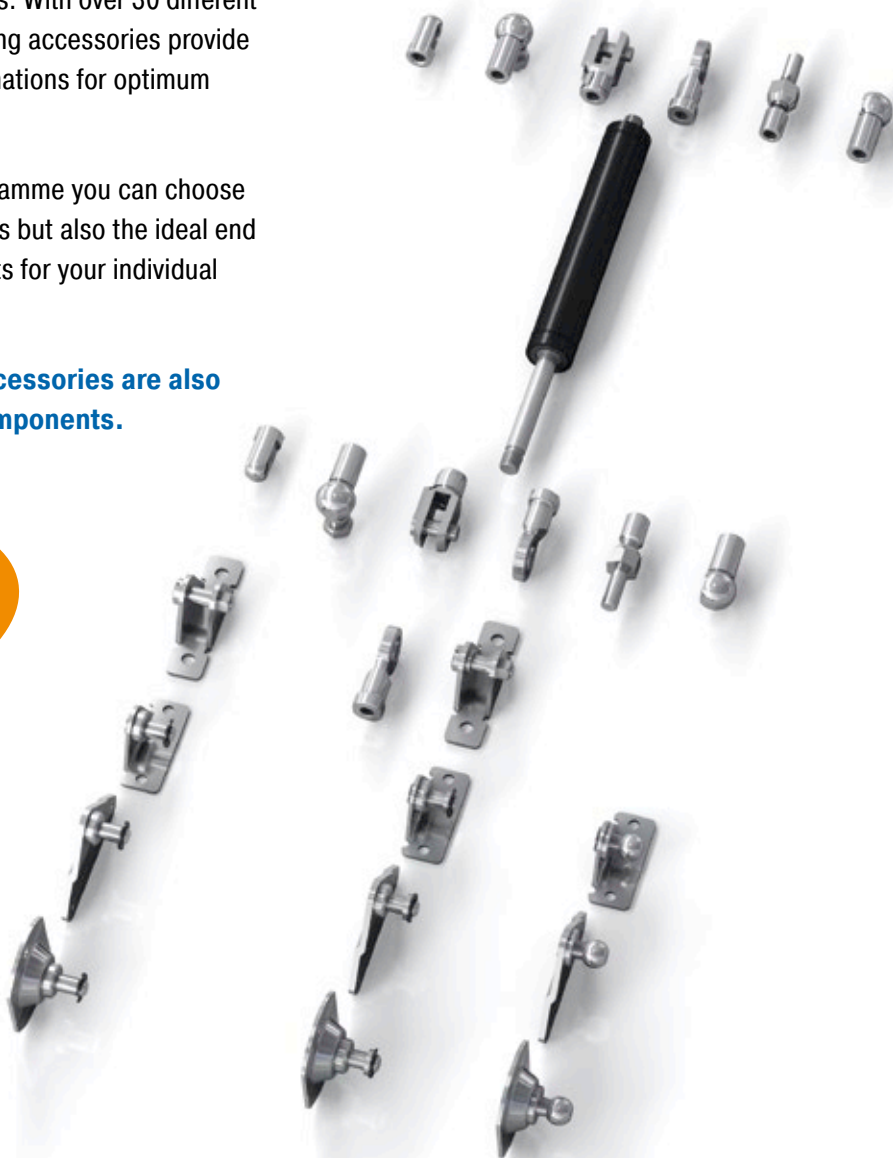
By taking advantage of the very extensive range of ACE end fittings and mounting brackets you can easily and simply install our gas springs and hydraulic dampers. You profit from the variety of DIN Standard end fittings such as swivel eyes, clevis forks, angle ball joints, inline ball joints, and complementary ball sockets.

ACE also offers eye fittings made of wear-resistant steel to meet the higher specification requirements found in industrial applications. With over 30 different types available these mounting accessories provide an extensive range of combinations for optimum installations.

With the ACE selection programme you can choose not only your ACE gas springs but also the ideal end fittings and mounting brackets for your individual application example.

The complete range of accessories are also available as individual components.

**Individual
Combinations!**

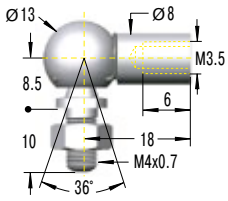


M3.5x0.6

(for GS-8, GS-10, GS-12, GZ-15, HB-12)

C3,5

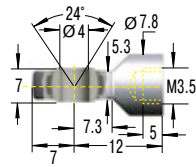
Angle Ball Joint
DIN 71802



¹ max. force 370 N

E3,5

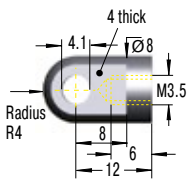
Swivel Eye
DIN 648



¹ max. force 370 N

A3,5

Eye

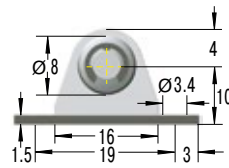


¹ max. force 370 N

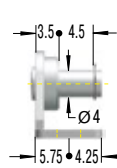


NA3,5

Angle Bracket with Ball

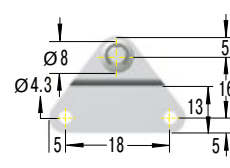


¹ max. force 180 N

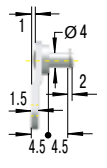


OA3,5

Side Bracket with Ball

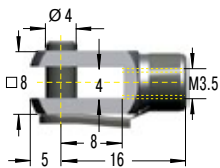


¹ max. force 180 N



D3,5

Clevis Fork
DIN 71752

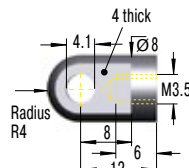


¹ max. force 370 N



A3,5

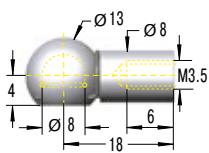
Eye



¹ max. force 370 N

G3,5

Ball Socket
DIN 71805

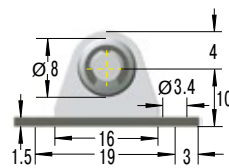


¹ max. force 370 N

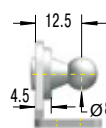


NG3,5

Angle Bracket with Ball

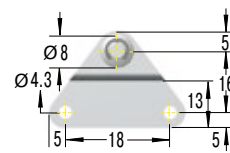


¹ max. force 180 N

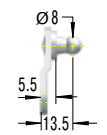


OG3,5

Side Bracket with Ball



¹ max. force 180 N

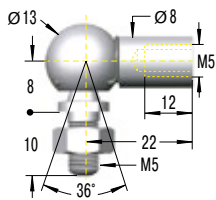


¹ Attention! Max. static load in Newtons. Beware force increase during compression (progression) and observe max. force limit.

Overview

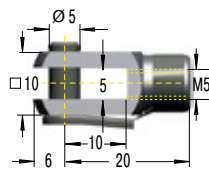
M5x0.8 (for GS-15, HB-15)

C5
Angle Ball Joint
DIN 71802



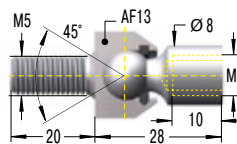
¹ max. force 500 N

D5
Clevis Fork
DIN 71752



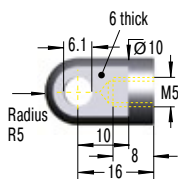
¹ max. force 800 N

F5
Inline Ball Joint



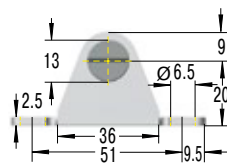
¹ max. force 500 N
Attention! Must only be used with compression loads!

A5
Eye



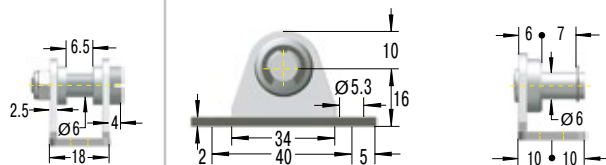
¹ max. force 800 N

MA5
Bearing Shoe



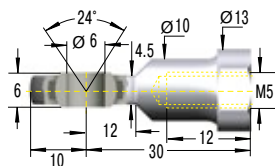
¹ max. force 500 N

NA5
Angle Bracket with Ball



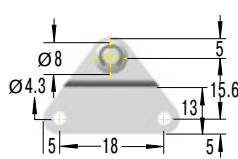
¹ max. force 400 N

E5
Swivel Eye
DIN 648



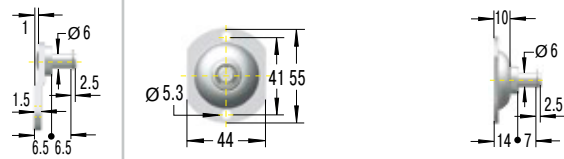
¹ max. force 800 N

OA5
Side Bracket with Ball



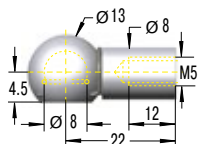
¹ max. force 180 N

PA5
Round Bracket with Ball



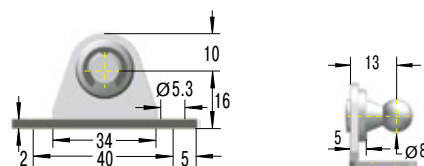
¹ max. force 500 N

G5
Ball Socket
DIN 71805



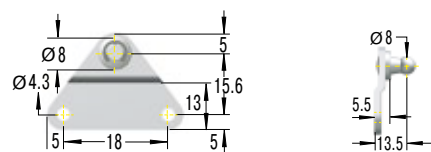
¹ max. force 500 N

NG5
Angle Bracket with Ball



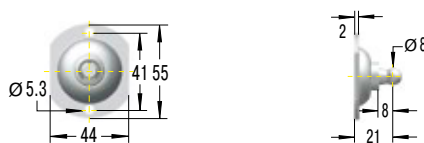
¹ max. force 400 N

OG5
Side Bracket with Ball



¹ max. force 180 N

PG5
Round Bracket with Ball



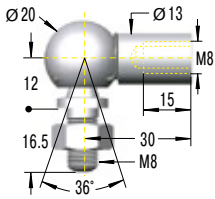
¹ max. force 500 N

¹Attention! Max. static load in Newtons. Beware force increase during compression (progression) and observe max. force limit.

M8x1.25

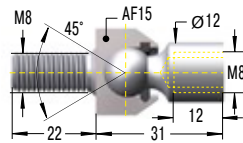
(for GS-19, GS-22, GZ-19, HB-22, HB-28, HBS-28, DVC-32)

C8 Angle Ball Joint DIN 71802



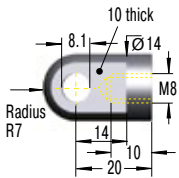
¹ max. force 1,200 N

F8 Inline Ball Joint



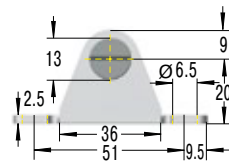
¹ max. force 1,200 N
Attention! Must only be used with compression loads!

A8 Eye



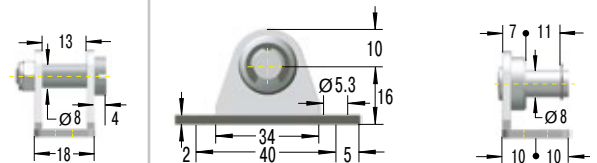
¹ max. force 3,000 N

MA8 Bearing Shoe



¹ max. force 1,800 N

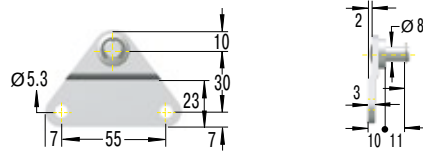
NA8 Angle Bracket with Ball



¹ max. force 1,000 N

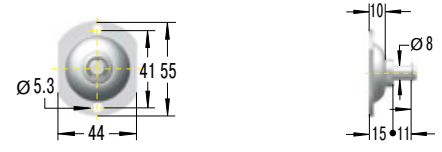


OA8 Side Bracket with Ball



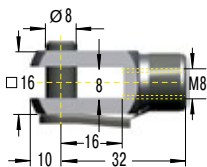
¹ max. force 1,200 N

PA8 Round Bracket with Ball



¹ max. force 1,200 N

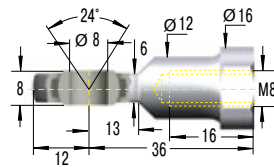
D8 Clevis Fork DIN 71752



¹ max. force 3,000 N



E8 Swivel Eye DIN 648



¹ max. force 3,000 N

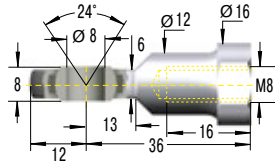
¹ Attention! Max. static load in Newtons. Beware force increase during compression (progression) and observe max. force limit.

Overview

M8x1.25

(for GS-19, GS-22, GZ-19, HB-22, HB-28, HBS-28, DVC-32)

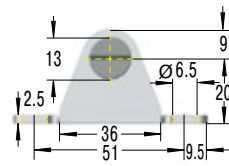
E8
Swivel Eye
DIN 648



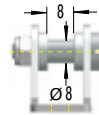
¹max. force 3,000 N



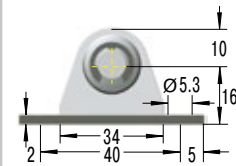
ME8
Bearing Shoe



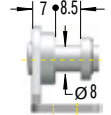
¹max. force 1,800 N



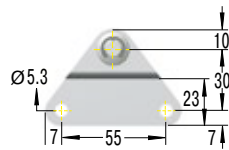
NE8
Angle Bracket with Ball



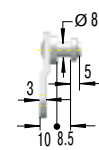
¹max. force 1,000 N



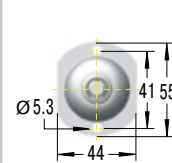
OE8
Side Bracket with Ball



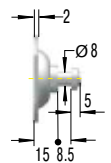
¹max. force 1,200 N



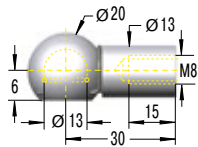
PE8
Round Bracket with Ball



¹max. force 1,200 N



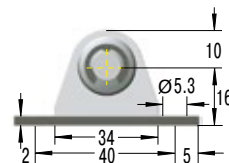
G8
Ball Socket
DIN 71805



¹max. force 1,200 N



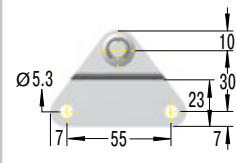
NG8
Angle Bracket with Ball



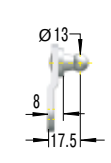
¹max. force 1,000 N



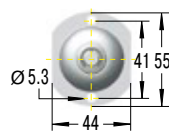
OG8
Side Bracket with Ball



¹max. force 1,200 N



PG8
Round Bracket with Ball



¹max. force 1,200 N



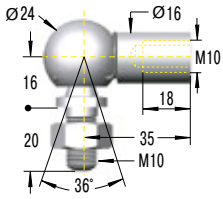
¹Attention! Max. static load in Newtons. Beware force increase during compression (progression) and observe max. force limit.

M10x1.5

(for GS-28, GZ-28, HBS-35)

C10

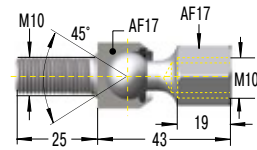
Angle Ball Joint
DIN 71802



¹ max. force 1,800 N

F10

Inline Ball Joint

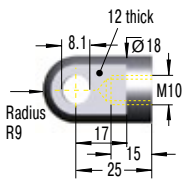


¹ max. force 1,800 N

Attention! Must only be used with compression loads!

A10

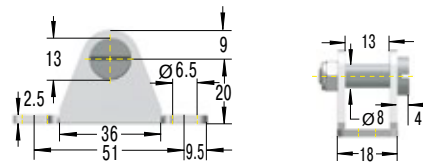
Eye



¹ max. force 10,000 N

MA10

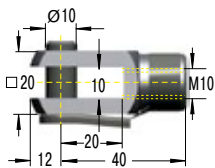
Bearing Shoe



¹ max. force 1,800 N

D10

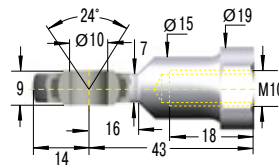
Clevis Fork
DIN 71752



¹ max. force 10,000 N

E10

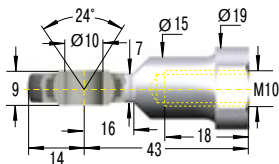
Swivel Eye
DIN 648



¹ max. force 10,000 N

E10

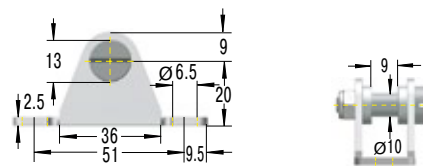
Swivel Eye
DIN 648



¹ max. force 10,000 N

ME10

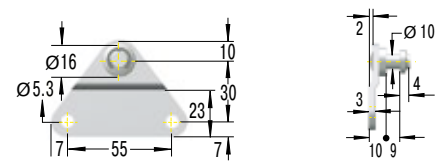
Bearing Shoe



¹ max. force 1,800 N

OE10

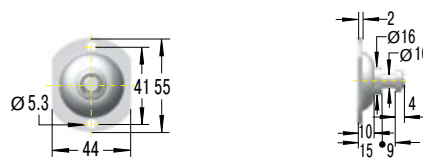
Side Bracket with Ball



¹ max. force 1,200 N

PE10

Round Bracket with Ball

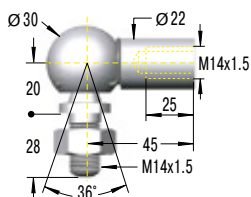


¹ max. force 1,200 N

Overview

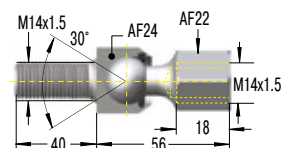
M14x1.5 (for GS-40, GST-40, GZ-40, HB-40, HBD-70)

C14
Angle Ball Joint
DIN 71802



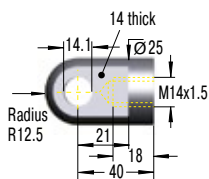
¹ max. force 3,200 N

F14
Inline Ball Joint



¹ max. force 3,200 N
Attention! Must only be used with compression loads!

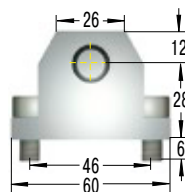
A14
Eye



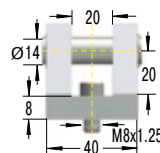
¹ max. force 10,000 N



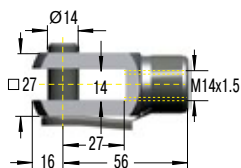
ME14
Bearing Shoe



¹ max. force 10,000 N



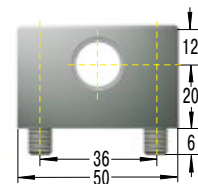
D14
Clevis Fork
DIN 71752



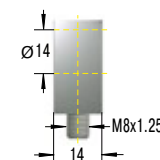
¹ max. force 10,000 N



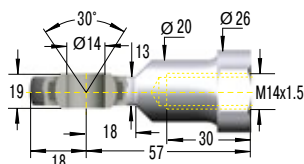
ND14
Mounting Flange



¹ max. force 10,000 N



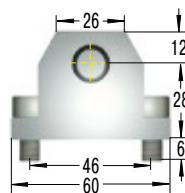
E14
Swivel Eye
DIN 648



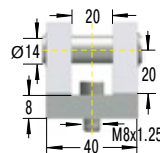
¹ max. force 10,000 N



ME14
Bearing Shoe



¹ max. force 10,000 N

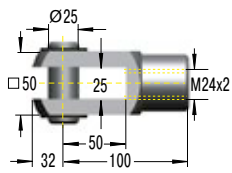


¹ Attention! Max. static load in Newtons. Beware force increase during compression (progression) and observe max. force limit.

M24x2

(for GS-70, HB-70, HBS-70)

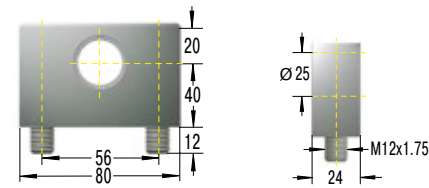
D24 Clevis Fork DIN 71752



¹ max. force 50,000 N

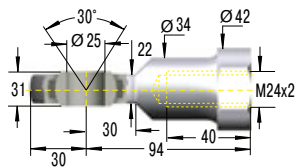


ND24 Mounting Flange



¹ max. force 50,000 N

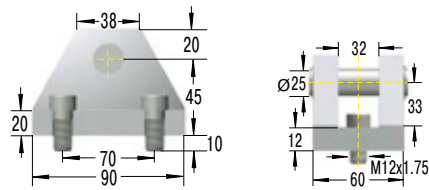
E24 Swivel Eye DIN 648



¹ max. force 50,000 N



ME24 Bearing Shoe



¹ max. force 50,000 N

¹ Attention! Max. static load in Newtons. Beware force increase during compression (progression) and observe max. force limit.