

Adjustable

VC25

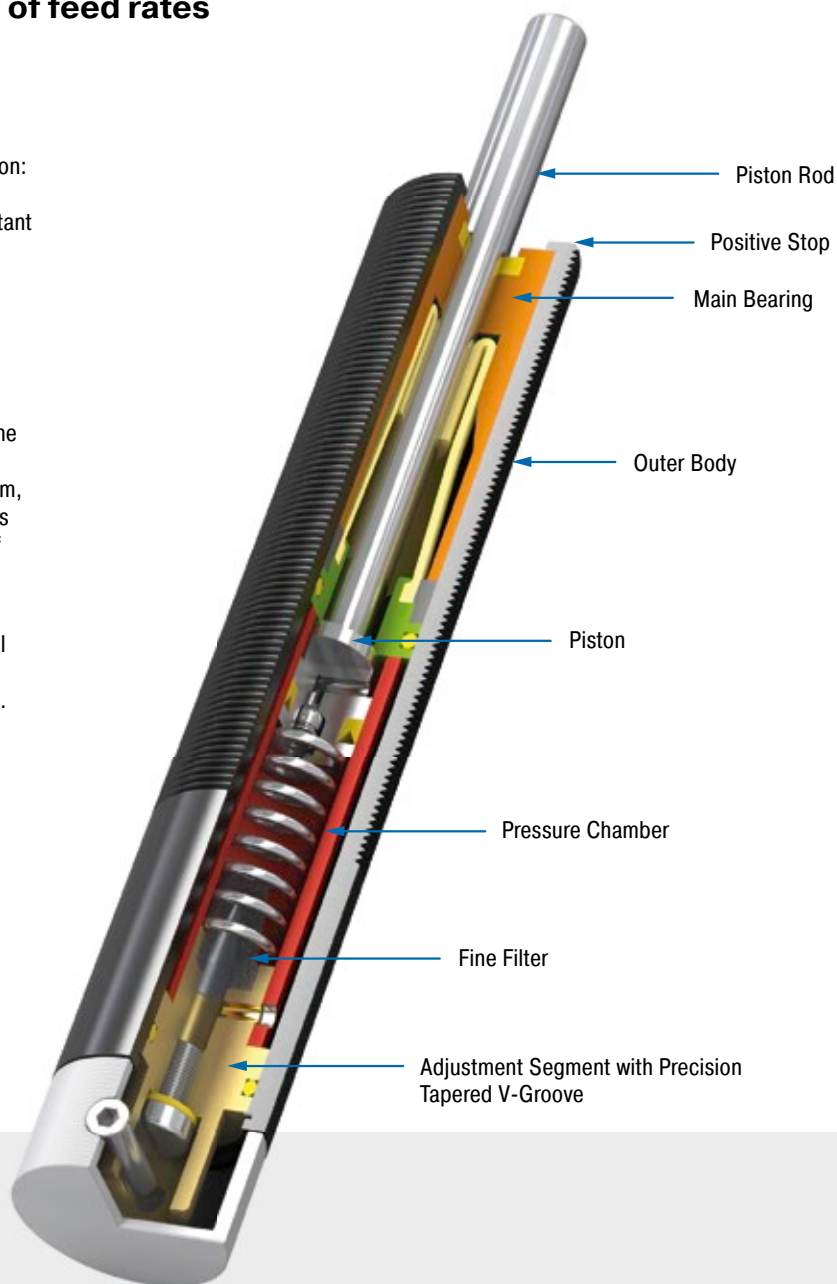
Hydraulic Feed Controls

For precision adjustment of feed rates

Precise adjustment for any type of application: The VC model of hydraulic feed controls is ideally suited for the precise tuning of constant feed rates. The thread of the outer body of this closed hydraulic element allows simple assembly. Designs with a smooth body can also be supplied.

As the hydraulic oil is forced out through the throttle opening, a constant feed rate is achieved on the stroke, which also avoids the stick-slip effect. In the models up to 55 mm stroke, the tried and tested rolling diaphragm, known from ACE shock absorbers, serves as a dynamic seal, as volume compensation of the piston rod and as a reset element.

The VC model of precision hydraulic feed controls is used in automotive and industrial applications as well as in automation and machine building and electronics industries.



Technical Data

Compression force: 30 N to 3,500 N

Execution: F = Ø 23.8 mm without thread
FT = M25x1.5 threaded body

Piston rod diameter: Ø 8 mm

Feed rate/Compression force: Min.
0.013 m/min. at 400 N; Max. 38 m/min. at
3,500 N

Impact velocity range: At speeds of 0.3 m/s the maximum allowed energy is approx. 1 Nm for units up to 55 mm stroke and approx. 2 Nm for units 75 mm to 125 mm stroke. Where higher energies occur use a shock absorber for the initial impact. Avoid high impact velocities.

Adjustment: Infinitely adjustable

Positive stop: External positive stops 1 mm to 1.5 mm before the end of stroke provided by the customer.

Damping medium: Oil, temperature stable

Material: Outer body: Black anodized aluminium; Piston rod: Hard chrome plated steel; Accessories: Steel with black oxide finish or nitride hardened

Mounting: In any position

Operating temperature range: 0 °C to 60 °C

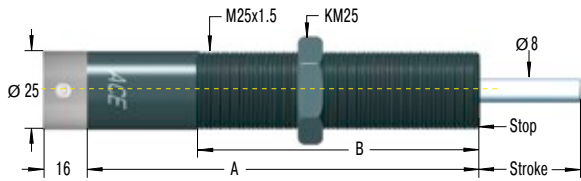
Application field: Handling modules, Linear slides, Automatic machinery, Conveyor equipment

Note: Nylon button PP600 can be fitted onto piston rod. Unit may be mounted in any position.

Safety instructions: Do not rotate piston rod, if excessive rotation force is applied rolling seal may rupture. External materials in the surrounding area can attack the seal components and lead to a shorter service life. Please contact ACE for appropriate solution suggestions.

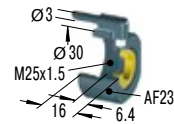
On request: Special oil and other special options available on request.

VC25EUFT



SP25

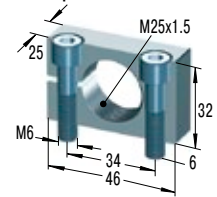
Air Bleed Collar



For VC2515FT to VC2555FT
reduction of the stroke 6.4 mm

MB25

Clamp Mount



Additional accessories, mounting, installation ... see from page 42.

Complete details required when ordering

- Load to be decelerated: m (kg)
- Impact velocity: v (m/s)
- Propelling force: F (N)
- Operating cycles per hour: c (/hr)
- Number of absorbers in parallel: n
- Ambient temperature: °C

Ordering Example

Type (Feed Control) _____ **VC 25 55 EUFT**

Thread Size M25 _____

Stroke (55 mm) _____

EU Compliant _____

FT = mit Gewinde M25x1,5 _____

F = without thread, plain body (Ø 23.8 mm)

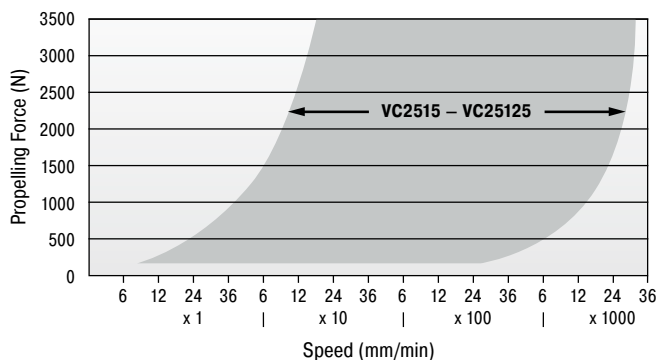
Performance and Dimensions

TYPES	Stroke mm	A mm	B mm	Compression		Return force min. N	Return force max. N	Return time s	Side Load Angle max. °	Weight kg
				Force min. N	Force max. N					
VC2515EUFT	15	128	80	30	3,500	15	30	0.2	3	0.350
VC2530EUFT	30	161	110	30	3,500	5	30	0.4	2	0.450
VC2555EUFT	55	209	130	35	3,500	5	40	1.2	2	0.423
VC2575EUFT	75	283	150	50	3,500	10	50	1.7	2	0.681
VC25100EUFT	100	308	150	60	3,500	10	50	2.3	1	0.794
VC25125EUFT	125	333.5	150	70	3,500	10	60	2.8	1	0.908

Suffix FT: M25x1.5 threaded body.

Suffix F: plain body 23.8 mm dia. (without thread), with optional clamp type mounting block.

Operating Range VC



Accessories with Mounting Example



Mounting with clamp mount MB25

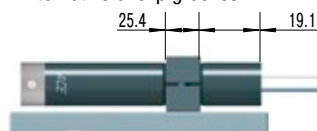


Installed with air bleed collar SP25



Installed with switch stop collar inc. proximity switch and steel button AS25 plus PS25

Alternative circlip grooves



Bulkhead mounting for VC25...F with mounting block KB... (23.8 mm plain body option)