



FL

Flex Locs

Quick fastening elements

FLs are removable quick fastening elements for vibration isolation and shock absorption as well as the isolation of structure-borne noise. Their extremely simple design is so selected that only one element can be used to effectively decouple two components from each other by tightening a fastening screw.

Standard metric screws (M3 to M8) can be used to tighten the connecting elements; no additional special tools are required. The FL elastic fasteners can be fixed via the screw connection into blind holes to connect panel elements to existing structures, for example. The inner threaded insert serves as an expansion element for fastening. The EPDM material used is resistant to ozone, oil and most acids. Standard FLs are available in 5 sizes from M3 to M8.

Properties

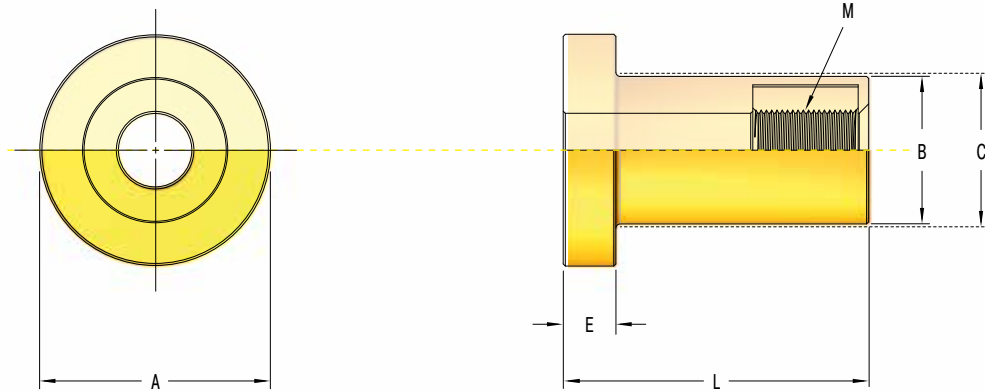
- Easy handling
- Efficient decoupling of housings
- No special tools necessary
- Isolates structure-borne noise
- Fail-safe
- Resistant to oil and UV radiation
- Rubber part made of neoprene (chloroprene rubber)
- Operating temperature range -30 °C to +80 °C

Areas of application

- Machines and assemblies
- Tiling, sheets and flanges
- Attachments to buildings
- Vehicles and transport industry
- Construction machines



FL-Q-x

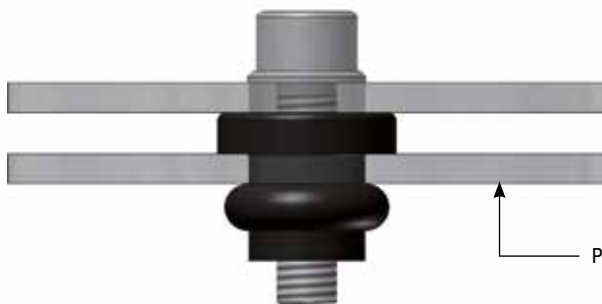


Type	Sheet assembly		Blind hole assembly	M	A mm	B mm	C ¹ mm	E mm	L mm	P ² mm	T I ³ Nm	T II ⁴ Nm
	Pressure kg	Shear kg										
FL-Q-3	5	2.5	1.0	M3	9	6.7	7.2 ⁰ _{-0.3}	2.5 ^{+0.4} ₀	11.5 ⁺¹ _{-0.5}	0.6 - 2.5	0.4 - 0.5	0.3 - 0.4
FL-Q-4	7	3.5	1.0	M4	12	8.5	9.3 ⁰ _{-0.3}	3.0 ^{+0.4} ₀	14.5 ⁺¹ _{-0.5}	0.8 - 3.3	0.4 - 0.6	0.4 - 0.5
FL-Q-5	10	5.0	1.5	M5	15	9.8	10.2 ⁰ _{-0.3}	3.5 ^{+0.4} ₀	18.0 ⁺¹ _{-0.5}	0.8 - 4.3	0.6 - 1.0	0.5 - 0.6
FL-Q-6	14	7.0	3.0	M6	18	12.0	12.7 ⁰ _{-0.3}	4.0 ^{+0.4} ₀	21.0 ^{+/-1}	1.5 - 5.0	2.3 - 3.5	0.7 - 0.9
FL-Q-8	28	14.0	5.0	M8	24	16.0	16.5 ⁰ _{-0.5}	5.0 ^{+0.4} ₀	27.0 ^{+/-1}	1.5 - 6.5	3.0 - 4.0	1.6 - 1.8

- 1 Corresponds to mounting hole
- 2 Sheet thickness
- 3 Tightening torque T I (Drawing 01)
- 4 Tightening torque T II (Drawing 02)

Sheet assembly

Drawing 01



Blind hole assembly

Drawing 02

